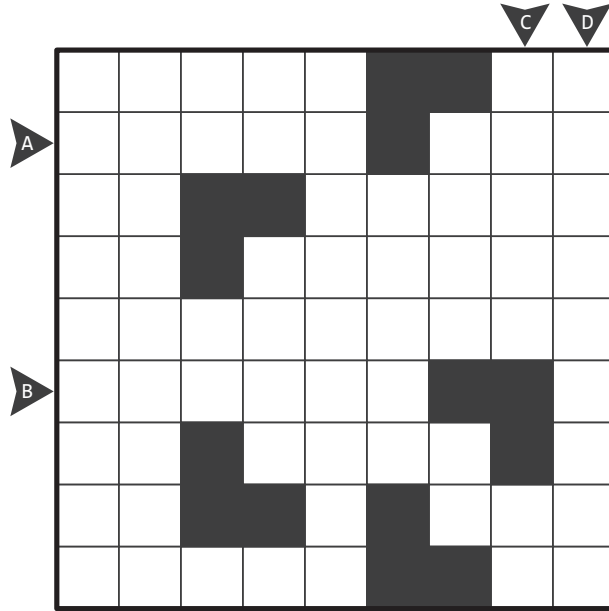


Simple Loop

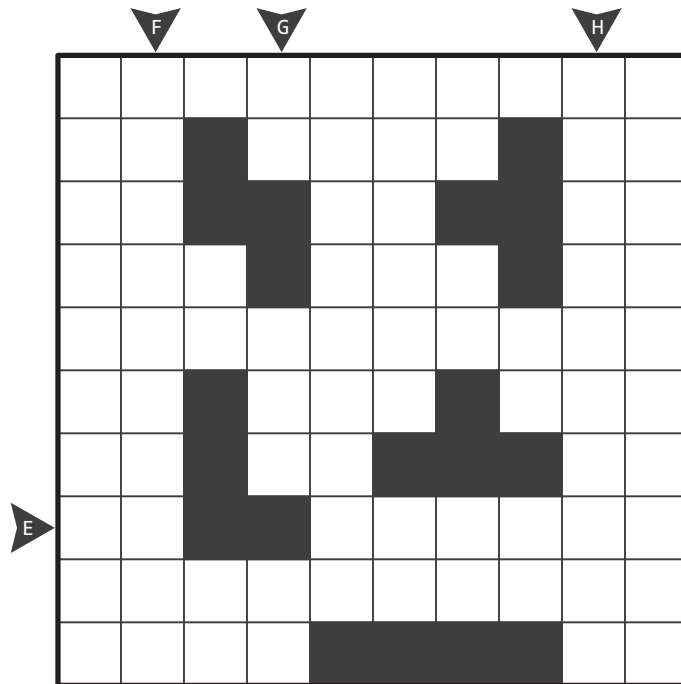
1 + 2 points

- Draw a single closed loop passing through every cell in the grid horizontally and vertically, except the given black cells.
- The loop can't cross or touch itself.

Answer key: Enter lengths of largest loop segment in marked row/column.



1

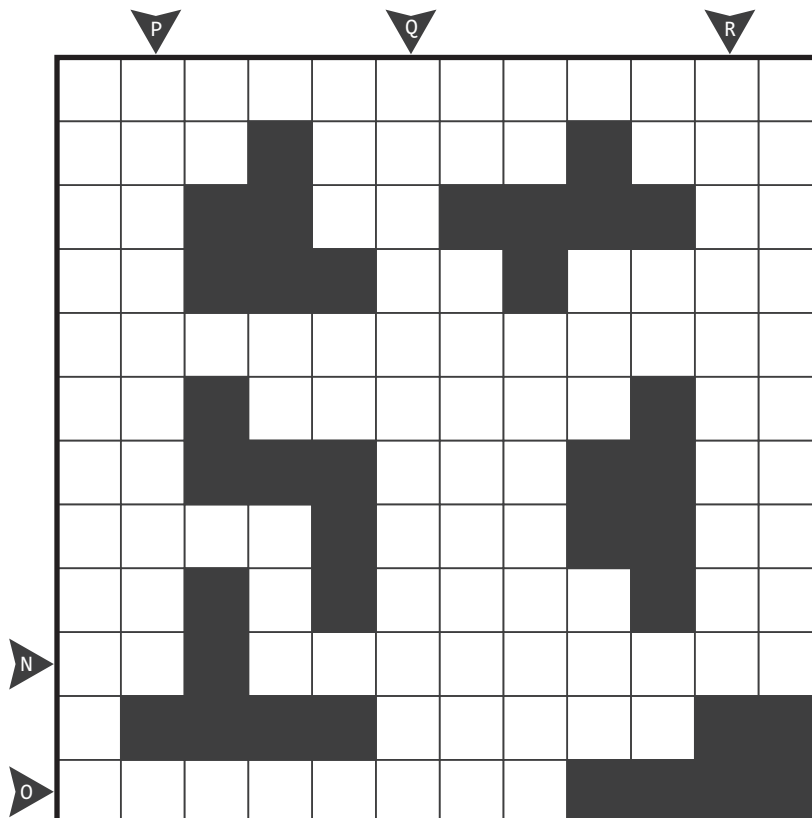
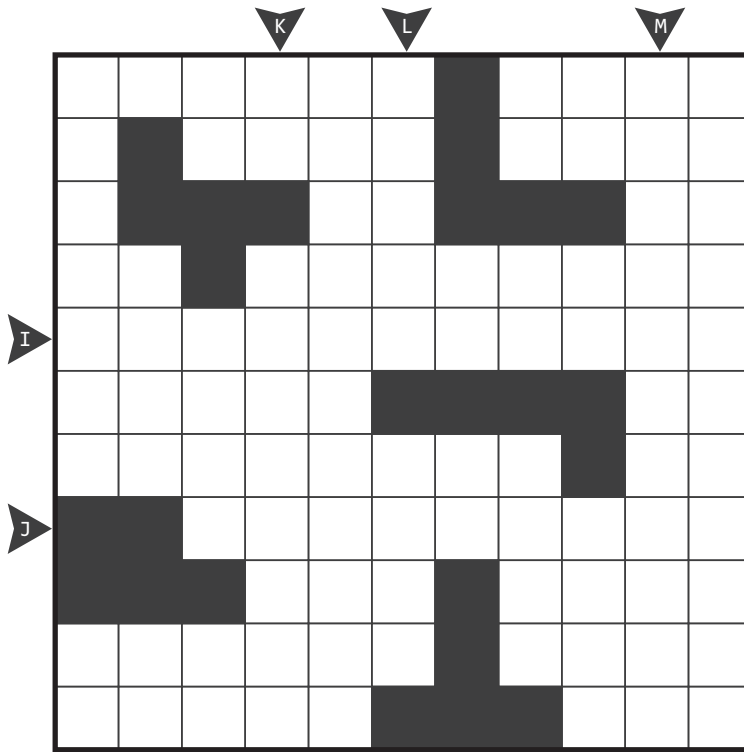


2

Simple Loop

2 + 3 points

Refer to previous page for rules and answer keys.



Maxi Loop

1 + 5 + 7 points

- Draw a single closed loop passing through every cell in the grid horizontally and vertically.
- The loop can't cross or touch itself.
- The numbers in the boldly marked regions indicate the highest amount of cells that the loop goes through consecutively (i.e. without exiting to another region) in that area.

Answer key: Enter lengths of largest loop segment in marked row/column.

Maxi Loop

16 points

Refer to previous page for rules and answer keys.

A 12x12 grid for a Maxi Loop puzzle. The grid contains numbers in various cells, indicating the length of the loop segment starting from that cell. Directional arrows (P, Q, R, S, O, 4) point to specific cells. The numbers are: (1,1)=5, (1,5)=2, (1,6)=3, (1,8)=1, (1,9)=4, (2,2)=1, (2,4)=1, (2,8)=2, (2,10)=2, (3,5)=2, (3,8)=2, (4,2)=4, (4,10)=3, (5,6)=2, (6,1)=4, (6,5)=3, (6,12)=4, (7,4)=2, (7,8)=3, (8,5)=1, (8,6)=4, (8,8)=2, (9,4)=2, (9,9)=1, (10,5)=2, (10,8)=2.

Masyu

2 + 1 points

- Draw a single closed loop, which connects centers of some (not necessarily all) cells horizontally and vertically.
- The loop can't cross or touch itself.
- The loop turns in every black circle and goes straight through both adjacent squares.
- The loop goes straight through every white circle and turns in at least one of both adjacent squares.

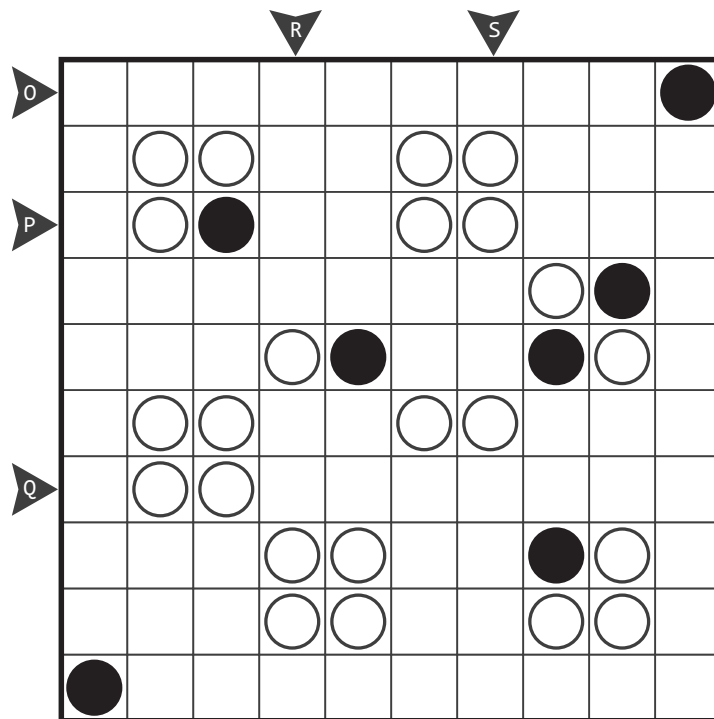
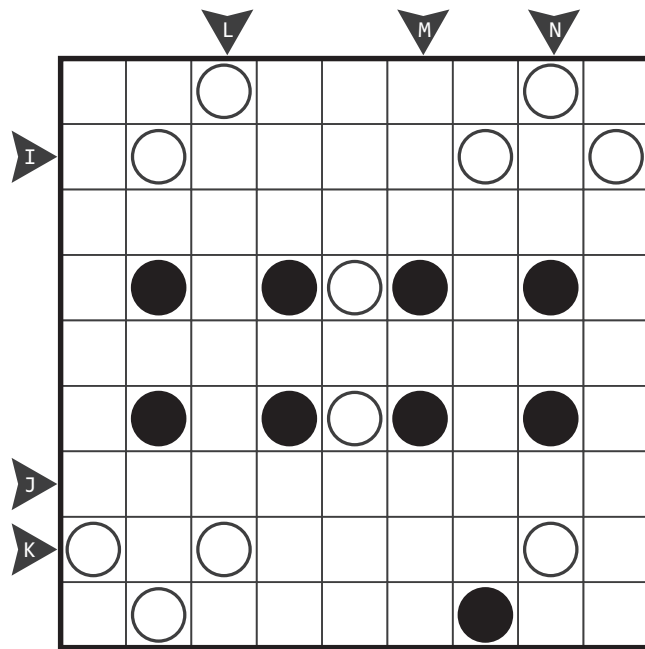
Answer key: Enter lengths of largest loop segment in marked row/column.

A 6x6 grid for a Masyu puzzle. Black circles are at (1,3), (1,5), (3,3), (3,5), (5,3), (5,5), (6,3), (6,5), (6,6). White circles are at (2,1), (2,6), (3,2), (3,4), (4,2), (4,4), (4,6), (5,1), (5,6), (6,2), (6,4). Directional arrows point to (1,2)=B, (1,4)=C, (1,5)=D, (2,1)=A, (2,6)=E, (3,2)=1, (3,3)=2, (3,4)=G, (3,6)=H, (5,1)=F.

Masyu

3 + 4 points

Refer to previous page for rules and answer keys.



Railroad Tracks

2 + 4 + 5 points

- Draw a single closed loop passing through every cell in the grid horizontally and vertically.
- The loop can't touch itself and must cross itself only in cells with a given '+'.
- The loop must pass straight through numbered cells, and must travel in order from 1 to 2 and so on till N (where N is the highest number given) and then back to 1.

Answer key: Enter lengths of largest loop segment in marked row/column.

Railroad Tracks

7 points

Refer to previous page for rules and answer keys.

A 10x10 grid puzzle. The grid contains numbers and crosses. The numbers are: 1 (row 1, col 2), 11 (row 1, col 6), 10 (row 2, col 4), 6 (row 2, col 9), 2 (row 3, col 3), 12 (row 4, col 1), 5 (row 6, col 9), 3 (row 8, col 1), 4 (row 8, col 5), 9 (row 9, col 4), 8 (row 9, col 8), and 7 (row 7, col 6). There are crosses at (3,6), (4,5), (5,3), (5,7), (6,4), (6,8), (7,2), and (8,4). Markers: 'R' and 'S' are above the top edge; 'O', 'P', and 'Q' are to the left of the grid; '4' is to the right of the grid.

Linesweeper

2 + 3 points

- Draw a single closed loop, which connects centers of some (not necessarily all) cells horizontally and vertically.
- The loop can't cross or touch itself.
- Numbers in the grid show the number of cells used by the loop in the surrounding 8-cell area.
- The loop cannot pass through cells with numbers.

Answer key: Enter lengths of largest loop segment in marked row/column.

Two 7x7 grid puzzles. The left grid has numbers: 3 (row 2, col 3), 2 (row 2, col 4), 6 (row 3, col 2), 5 (row 3, col 6), 6 (row 4, col 2), 7 (row 4, col 6), 3 (row 6, col 3), and 3 (row 6, col 4). Markers: 'A' (left), 'B' (left), 'C' (top), and 'D' (top). The right grid has numbers: 5 (row 2, col 3), 7 (row 2, col 4), 4 (row 3, col 6), 2 (row 3, col 6), 5 (row 4, col 2), 2 (row 4, col 2), 6 (row 5, col 5), and 5 (row 5, col 6). Markers: 'E' (left), 'F' (left), 'G' (left), and 'H' (top). Between the grids are markers '1' and '2' pointing to the right.

Linesweeper

2 + 5 points

Refer to previous page for rules and answer keys.

			5					
		7					5	
						7		
I								
		3						
	2					5		
J					7			

K
L

3

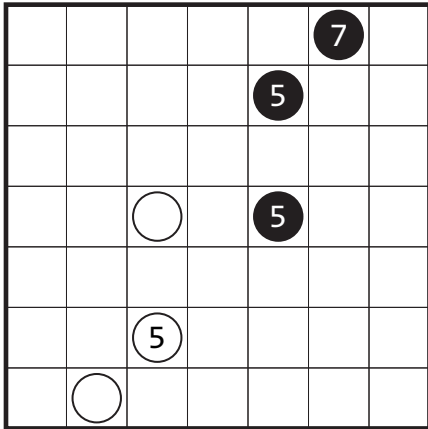
		4					4	
	5	2					2	3
N								
				3	5			
				4	4			
	2	3					2	4
O		1					4	
P								

Q

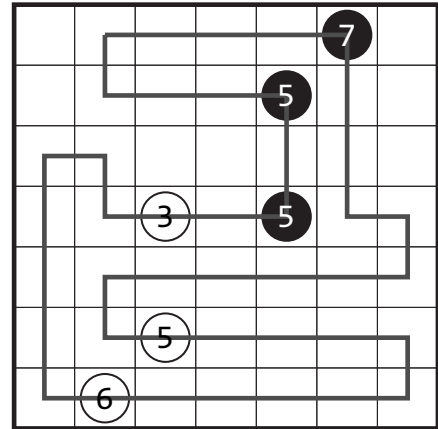
4

Masyu Variation

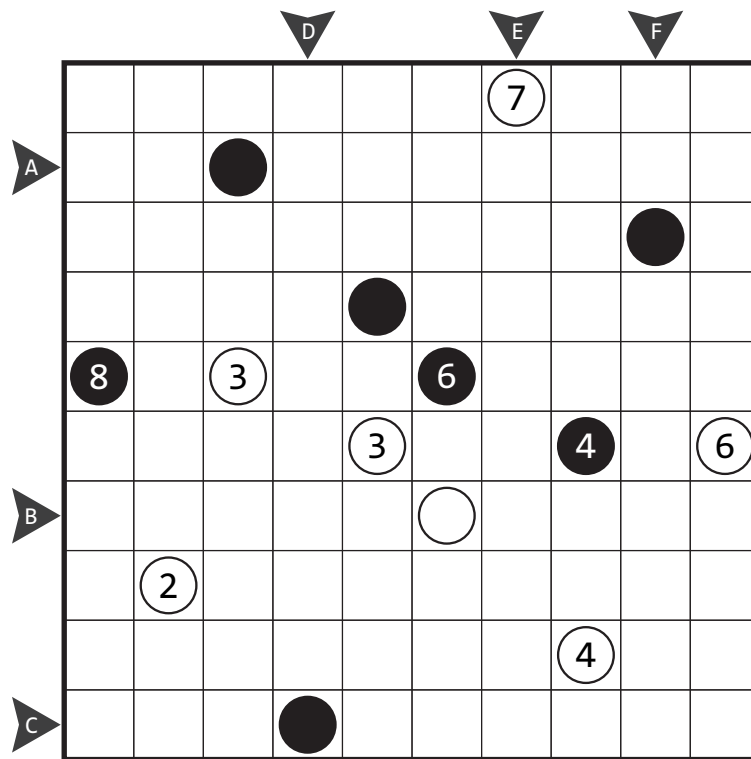
9 points



EXAMPLE



Answer key: Enter lengths of largest loop segment in marked row/column.



Linesweeper Variation

14 points

1				5	
2		8	6		
	3			8	

EXAMPLE

1					5
2		8	6		
	3			8	

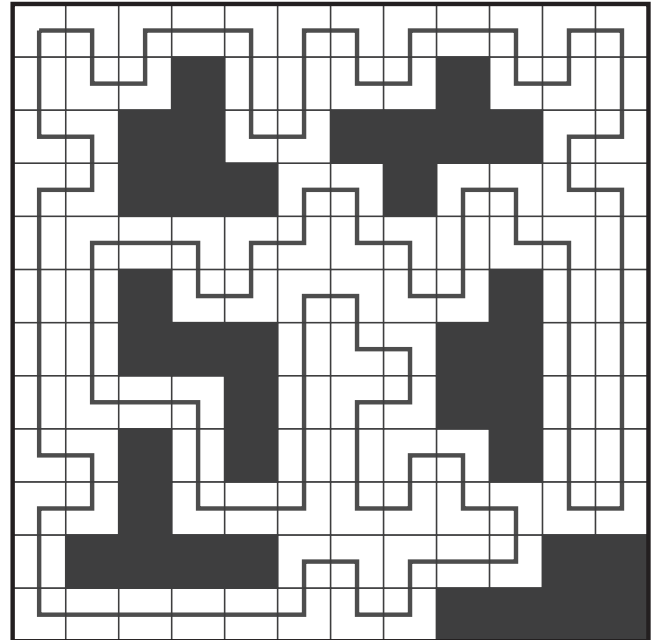
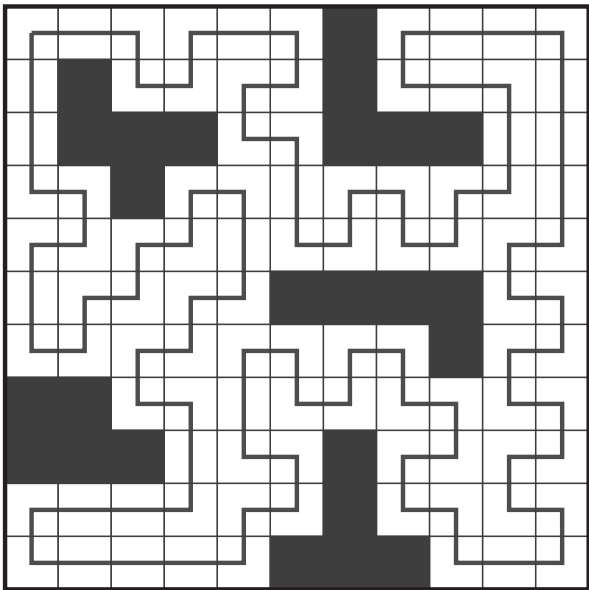
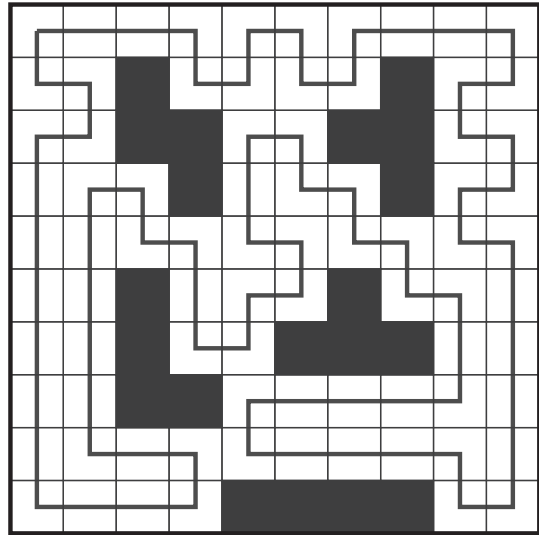
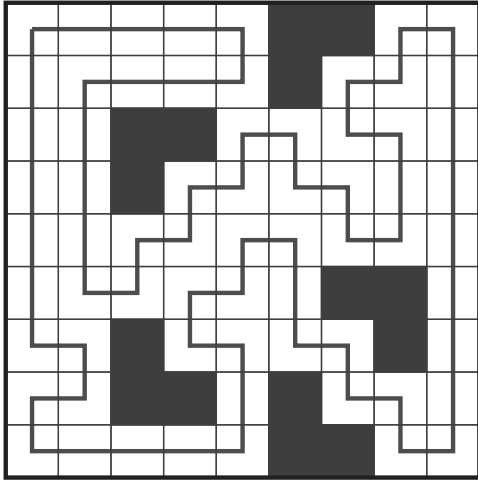
Answer key: Enter lengths of largest loop segment in marked row/column.

	6						4
	6						4
				6			
				4			
	6	4				8	6
				5			
G				5			
H	6						8
I	3						6

End of Test

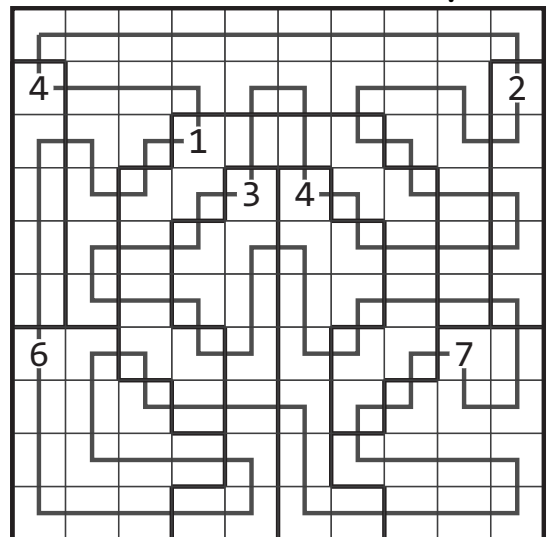
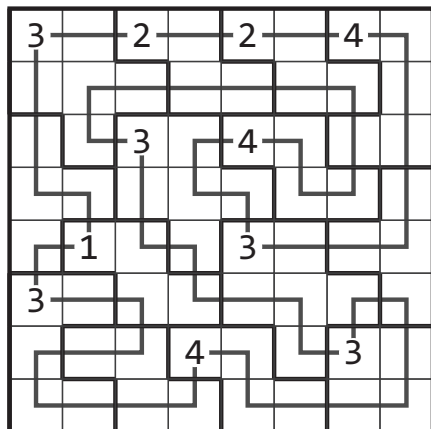
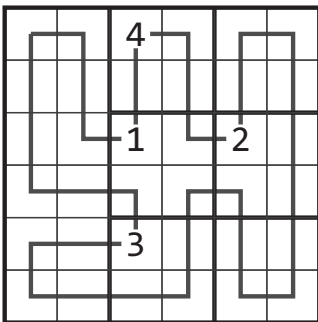
Simple Loop

1 + 2 + 2 + 3 points



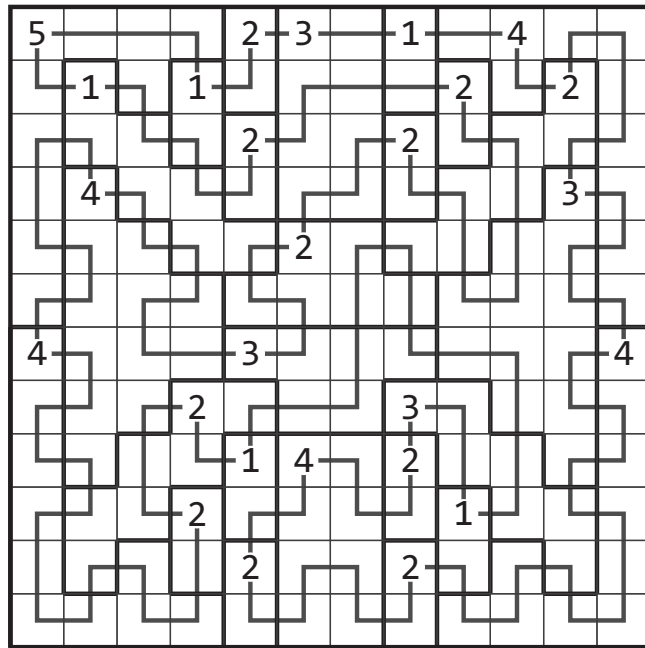
Maxi Loop

1 + 5 + 7 points



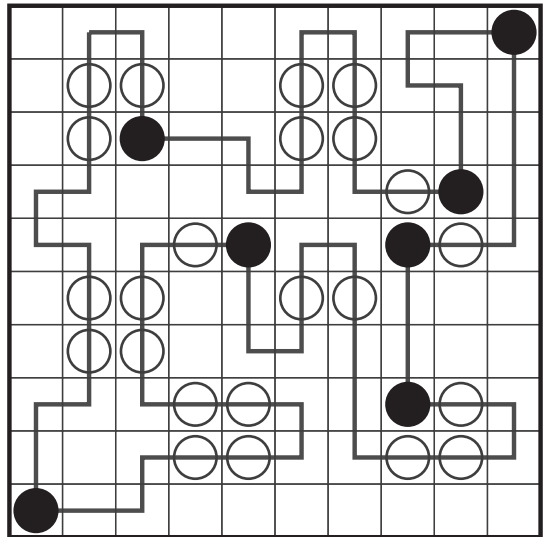
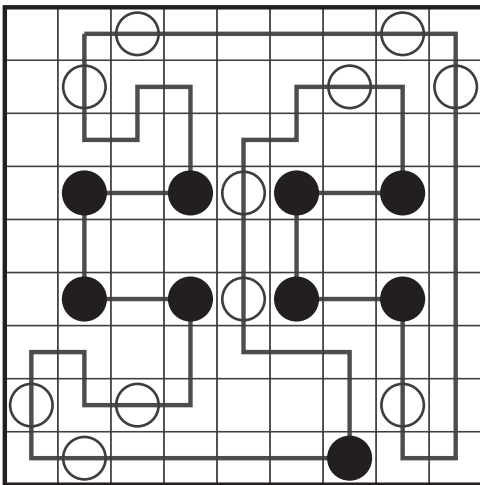
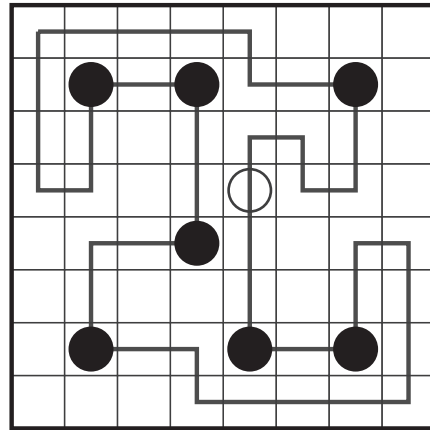
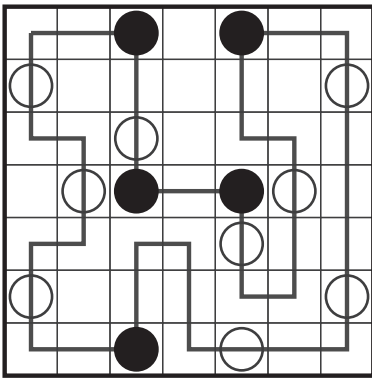
Maxi Loop

16 points

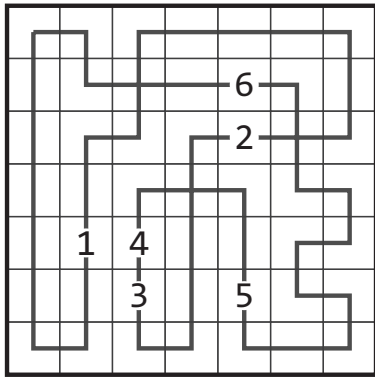


Masyu

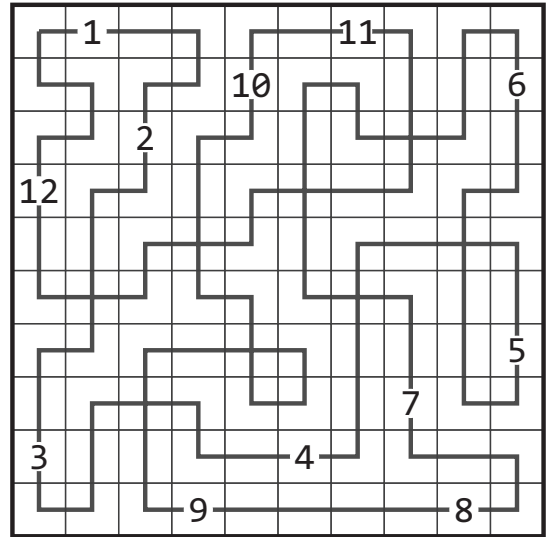
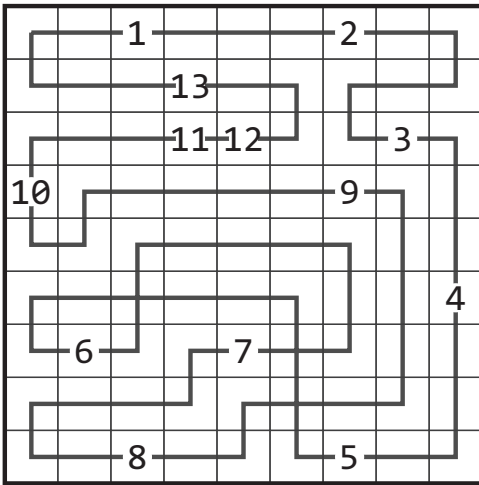
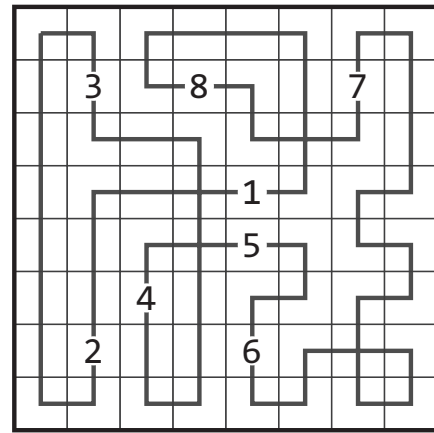
2 + 1 + 3 + 4 points



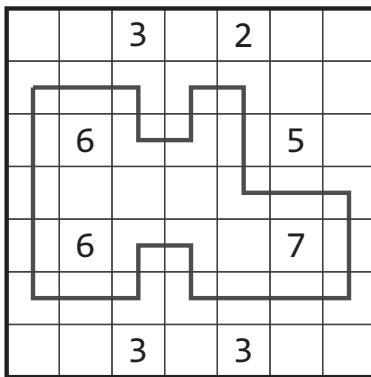
Railroad Tracks



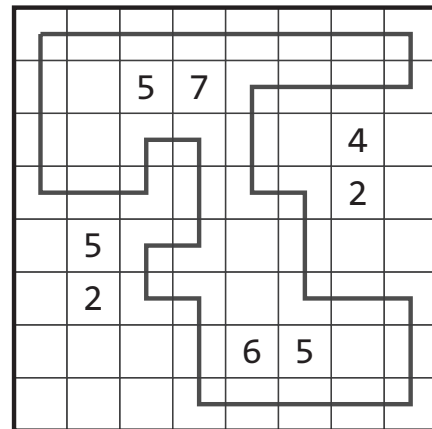
2 + 4 + 5 + 7 points



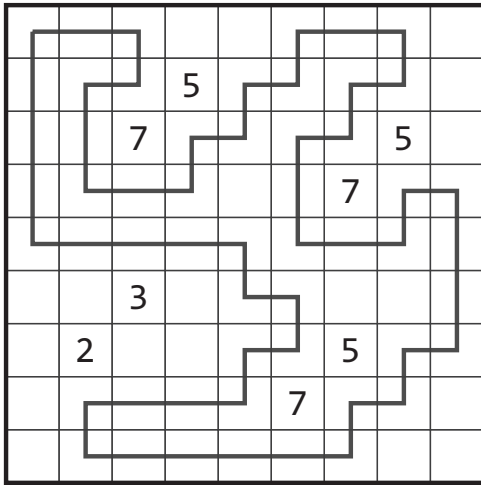
Linesweeper



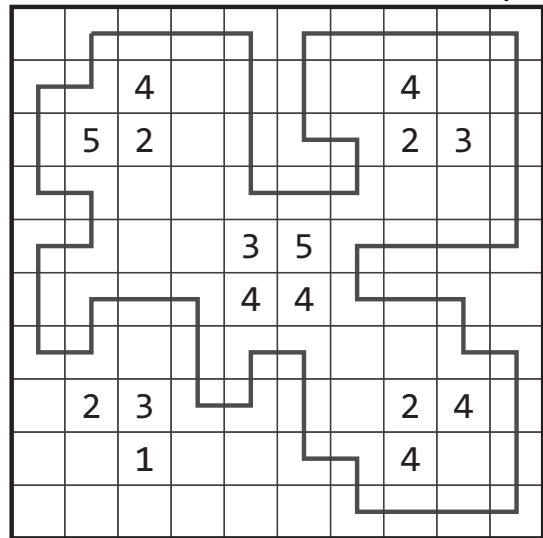
2 + 3 points



Linesweeper

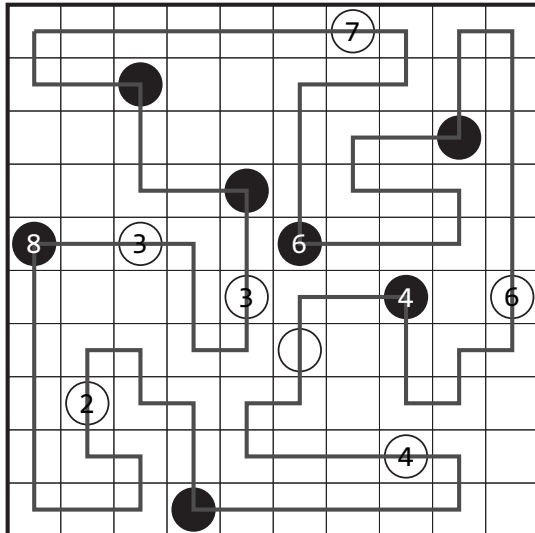


2 + 5 points



Masyu Variation 9 points

Added rule – The number in a circle gives the sum of length of loop segments on either side of the circle.



Linesweeper Variation 14 points

Changed rule – The loop can pass through clue cells, and the clue number describes the 3x3 area it is in the middle of (9-cells instead of 8-cells).

