

## Standard Sudoku

Place a digit from 1 to 6 in each empty cell so that each digit appears exactly once in each row, column and 2X3 box.

1 point



5	4				
6					
4			6		
		1			4
					1
				3	2

1 point



5				1	
	3		4		
		1			
			2		
		2		4	
	5				6



1 point



4					5
			3		
		2		6	
	1		5		
		4			
1					2

1 point



					3
	1	2			
		3			1
1			6		
			5	4	
6					

## Standard Sudoku

4 points

Place a digit from 1 to 8 in each empty cell so that each digit appears exactly once in each row, column and 2X4 box.

4			2	1		3	
	7				2		
		2		5		7	
7			5				3
6				3			1
	1		3		8		
		7				8	
	6		8	4			5

## Standard Sudoku

11 points

Place a digit from 1 to 9 in each empty cell so that each digit appears exactly once in each row, column and 3X3 box.

7			6			1		
	4			7			5	
		2			8			6
		4			3			9
	8			5			1	
2			8			6		
5			3			9		
	2			6			4	
		6			7			5

## Standard Sudoku

6 points

Place a digit from 1 to 9 in each empty cell so that each digit appears exactly once in each row, column and 3X3 box.

K

3								1
		2	9		7	3		
	9			5			4	
	7			2			9	
		8	5		9	6		
4								3
		6	8		1	5		
		4	3		5	2		
1				7				9

J

## Standard Sudoku

7 points

Place a digit from 1 to 9 in each empty cell so that each digit appears exactly once in each row, column and 3X3 box.

M

2		6			4	9		7
	1			3			2	
7			8					1
			2			1		
	2			9			4	
		1			6			
8					5			4
	3			4			7	
6		5	9			8		3

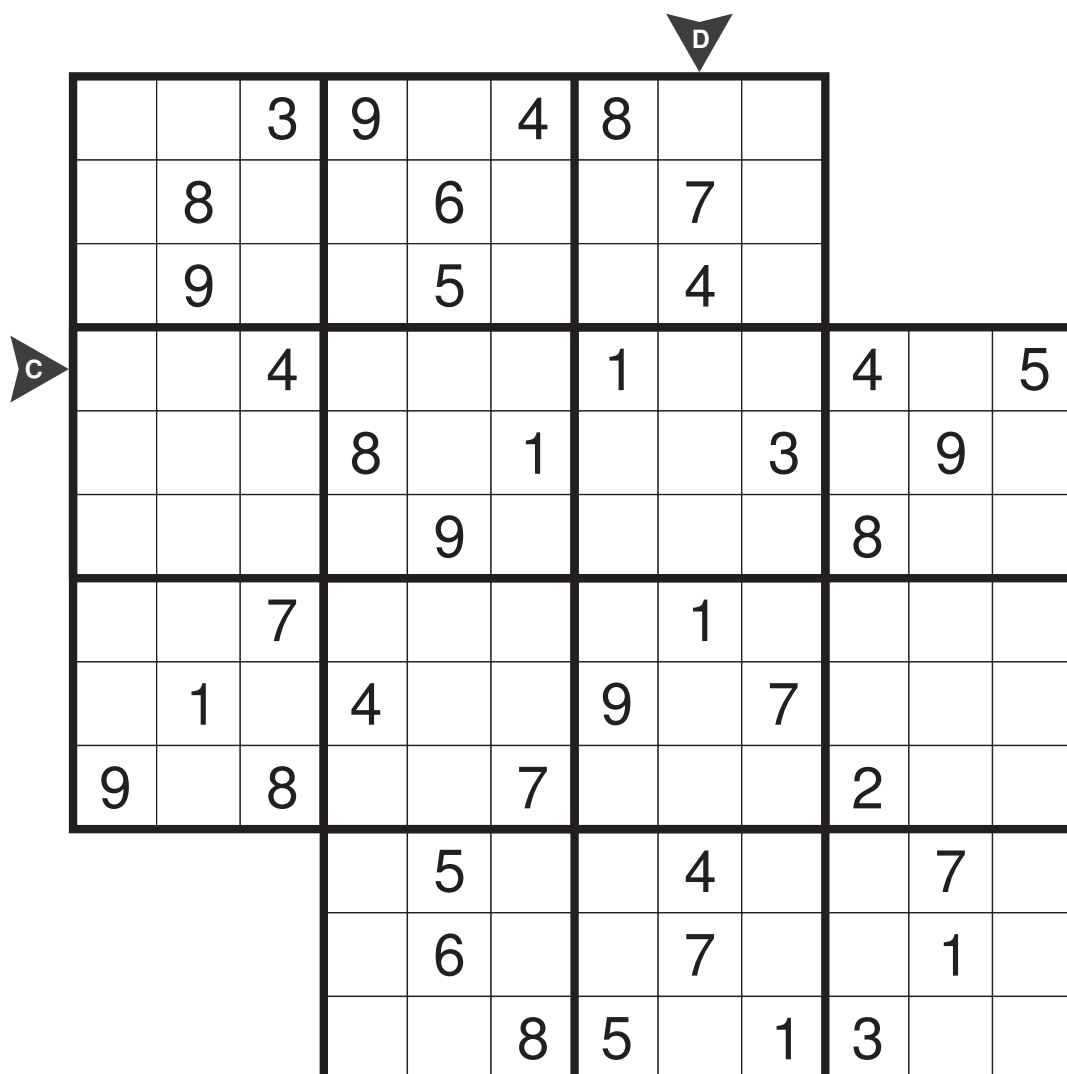
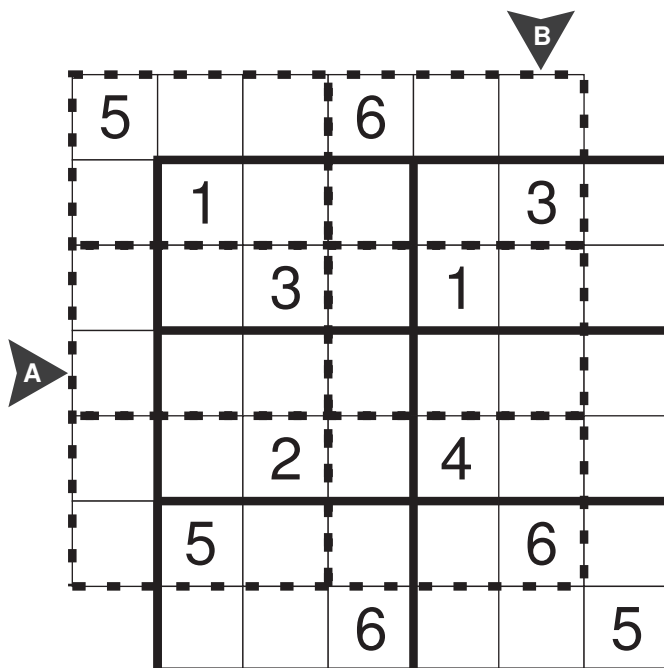
L

## Overlapping Sudoku

3 points  
16 points

Apply standard  
Sudoku rules to  
each of the grids.

Two grids are  
overlapping.



## Linked Sudoku

5 points

Apply standard  
Sudoku rules to  
each of the grids.

Two grids are linked  
to each other. The  
shaded cells must  
contain same digit  
in both the grids.

A

					1
		1			
	1		5		
		2		1	
			1		
1					

B

2					
			6		
		1		4	
	1		3		
		6			
					5

## Linked Sudoku

16 points

Apply standard Sudoku rules to each of the grids.

Two grids are linked to each other. The shaded cells must contain same digit in both the grids.

**C**

3		2				6		8
	4							
7		1				4		2
			9		6			
				4				
			8		7			
6		4				1		9
							6	
5		9				7		4

**E**

	9						4	
1	4	6				8		5
	8					7	1	
				2				
			1	3	5			
				4				
	5	7					9	
8		1				5	7	2
	2						8	

**D**

## Disjoint Sudoku

1 point

Apply standard Sudoku rules.

Additionally, no digit can appear in the same position in different 2X3 boxes.

A

1					6
	3		1		
					4
2					
		5		6	
6					1

## Disjoint Sudoku

9 points

Apply standard Sudoku rules.

Additionally, no digit can appear in the same position in different 3X3 boxes.

C

B

	2			3		9		
4		3		9				
	9				1	5		
							9	
	7	8				3	5	
	6							
		2	5				6	
				1		2		7
		9		7			4	

## Mirror Sudoku

1 point

Apply standard Sudoku rules.

The four corner boxes (top left, top right, bottom left, bottom right) all contain the same digit in symmetrical positions with respect to the center of the grid.

				4	
					6
	2				
1		3			
				5	

## Mirror Sudoku

7 points

Apply standard Sudoku rules.

The four corner boxes (top left, top right, bottom left, bottom right) all contain the same digit in symmetrical positions with respect to the center of the grid.

3					2			6
	2			6			3	
		1	8					4
		6	1					2
	5						1	
7					5	6		
4					9	1		
	3			5			2	
6			2					3



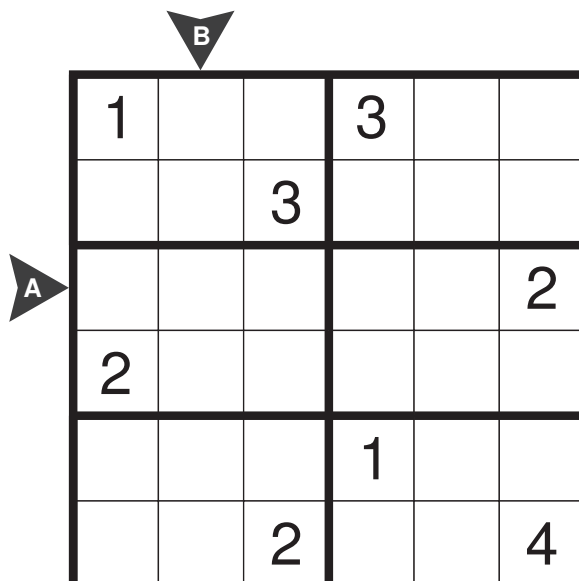
## Twin Givens Sudoku

2 points

Place digits from 1-4 in each row, column and 2x3 outlined box.

Two cells will remain empty as these are twins and of the same value. No two twins can touch each other in orthogonal directions.

Enter X for blank cells, while entering the answer key.



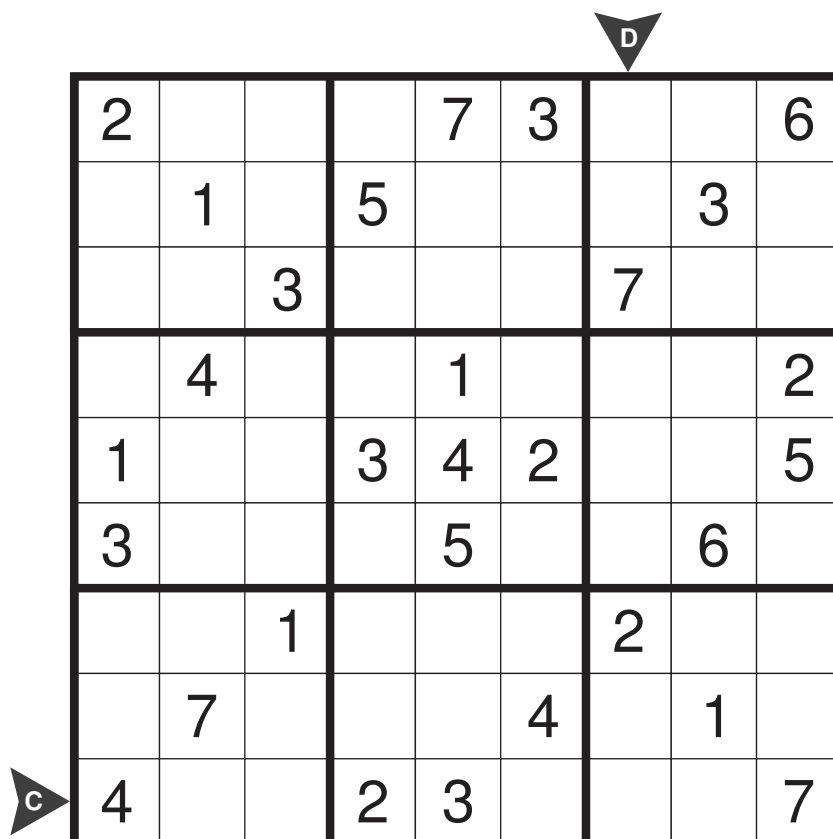
## Twin Givens Sudoku

8 points

Place digits from 1-7 in each row, column and 3x3 outlined box.

Two cells will remain empty as these are twins and of the same value. No two twins can touch each other in orthogonal directions.

Enter X for blank cells, while entering the answer key.



## Standard Sudoku

Place a digit from 1 to 6 in each empty cell so that each digit appears exactly once in each row, column and 2X3 box.

1 point



5	4	3	1	2	6
6	1	2	3	4	5
4	2	5	6	1	3
3	6	1	2	5	4
2	3	4	5	6	1
1	5	6	4	3	2

1 point



5	2	4	6	1	3
1	3	6	4	5	2
2	6	1	5	3	4
3	4	5	2	6	1
6	1	2	3	4	5
4	5	3	1	2	6



1 point



4	3	6	2	1	5
2	5	1	3	4	6
5	4	2	1	6	3
6	1	3	5	2	4
3	2	4	6	5	1
1	6	5	4	3	2

1 point



5	4	6	1	2	3
3	1	2	4	6	5
4	6	3	2	5	1
1	2	5	6	3	4
2	3	1	5	4	6
6	5	4	3	1	2

## Standard Sudoku

4 points

Place a digit from 1 to 8 in each empty cell so that each digit appears exactly once in each row, column and 2X4 box.

					G			
4	8	6	2	1	5	3	7	
3	7	5	1	6	2	4	8	
8	3	2	6	5	1	7	4	
7	4	1	5	8	6	2	3	
								F
6	2	8	7	3	4	5	1	
5	1	4	3	7	8	6	2	
1	5	7	4	2	3	8	6	
2	6	3	8	4	7	1	5	

## Standard Sudoku

11 points

Place a digit from 1 to 9 in each empty cell so that each digit appears exactly once in each row, column and 3X3 box.

								I	
7	5	8	6	3	4	1	9	2	
H	6	4	1	2	7	9	8	5	3
9	3	2	5	1	8	4	7	6	
1	6	4	7	2	3	5	8	9	
3	8	9	4	5	6	2	1	7	
2	7	5	8	9	1	6	3	4	
5	1	7	3	4	2	9	6	8	
8	2	3	9	6	5	7	4	1	
4	9	6	1	8	7	3	2	5	

## Standard Sudoku

6 points

Place a digit from 1 to 9 in each empty cell so that each digit appears exactly once in each row, column and 3X3 box.


## Standard Sudoku

7 points

Place a digit from 1 to 9 in each empty cell so that each digit appears exactly once in each row, column and 3X3 box.


## Overlapping Sudoku

3 points  
16 points

Apply standard Sudoku rules to each of the grids.

Two grids are overlapping.

5	3	4	6	2	1	
2	1	6	4	5	3	2
6	2	3	5	1	4	6
1	4	5	3	6	2	1
3	6	2	1	4	5	3
4	5	1	2	3	6	4
3	4	6	2	1	5	

1	5	3	9	7	4	8	6	2			
4	8	2	1	6	3	5	7	9			
7	9	6	2	5	8	3	4	1			
5	6	4	7	3	2	1	9	8	4	6	5
2	7	9	8	4	1	6	5	3	7	9	2
8	3	1	6	9	5	7	2	4	8	3	1
6	4	7	3	8	9	2	1	5	6	4	7
3	1	5	4	2	6	9	8	7	1	5	3
9	2	8	5	1	7	4	3	6	2	8	9
1	5	3	8	4	2	9	7	6			
2	6	4	3	7	9	5	1	8			
9	7	8	5	6	1	3	2	4			

## Linked Sudoku

5 points

Apply standard  
Sudoku rules to  
each of the grids.

Two grids are linked  
to each other. The  
shaded cells must  
contain same digit  
in both the grids.

A

5	6	3	4	2	1
2	4	1	6	5	3
3	1	6	5	4	2
4	5	2	3	1	6
6	2	5	1	3	4
1	3	4	2	6	5

B

2	5	3	4	6	1
1	4	2	6	5	3
3	6	1	5	4	2
4	1	5	3	2	6
5	2	6	1	3	4
6	3	4	2	1	5

## Linked Sudoku

16 points

Apply standard Sudoku rules to each of the grids.

Two grids are linked to each other. The shaded cells must contain same digit in both the grids.

**C**

3	9	2	1	5	4	6	7	8
8	4	6	2	7	9	5	1	3
7	5	1	3	6	8	4	9	2
4	1	8	9	2	6	3	5	7
9	7	3	5	4	1	8	2	6
2	6	5	8	3	7	9	4	1
6	2	4	7	8	5	1	3	9
1	8	7	4	9	3	2	6	5
5	3	9	6	1	2	7	8	4

**E**

7	9	3	8	5	1	2	4	6
1	4	6	2	7	9	8	3	5
5	8	2	3	6	4	7	1	9
4	1	8	9	2	6	3	5	7
6	7	9	1	3	5	4	2	8
2	3	5	7	4	8	9	6	1
3	5	7	6	8	2	1	9	4
8	6	1	4	9	3	5	7	2
9	2	4	5	1	7	6	8	3

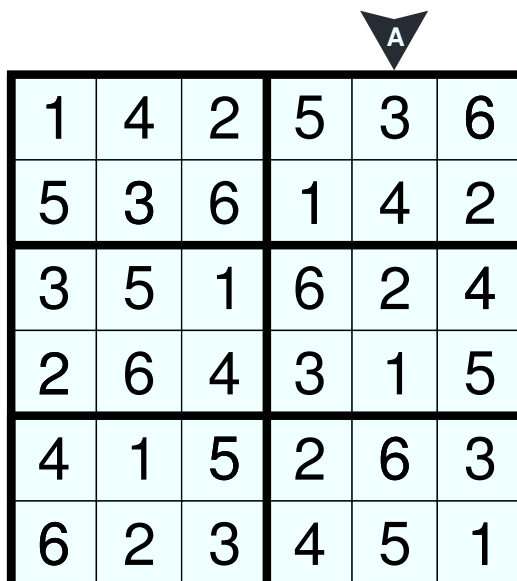
**D**

## Disjoint Sudoku

1 point

Apply standard Sudoku rules.

Additionally, no digit can appear in the same position in different 2X3 boxes.



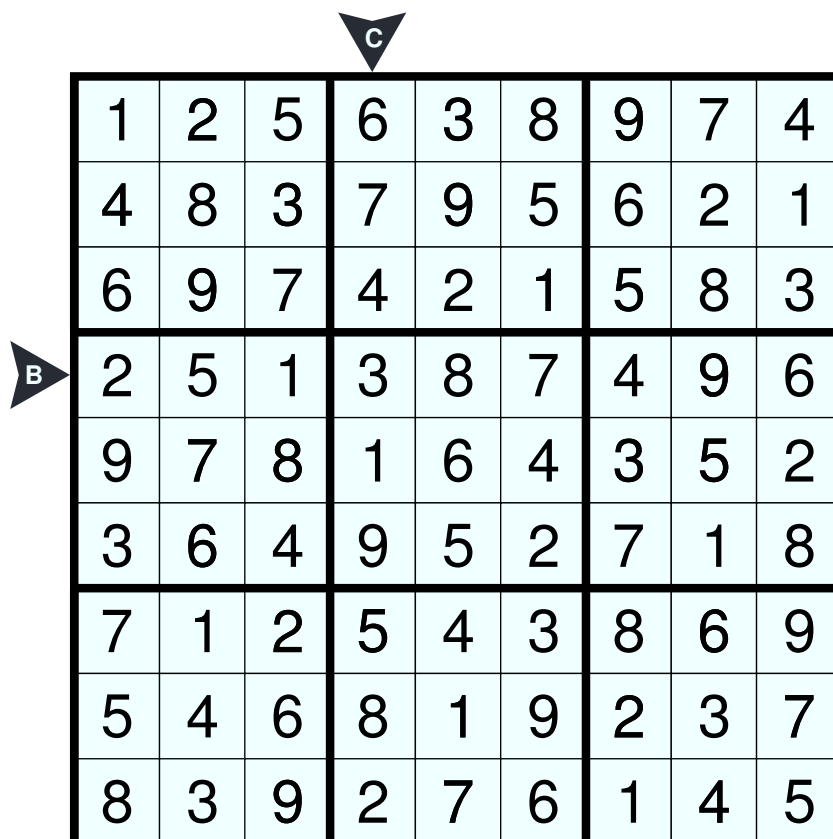
1	4	2	5	3	6
5	3	6	1	4	2
3	5	1	6	2	4
2	6	4	3	1	5
4	1	5	2	6	3
6	2	3	4	5	1

## Disjoint Sudoku

9 points

Apply standard Sudoku rules.

Additionally, no digit can appear in the same position in different 3X3 boxes.



1	2	5	6	3	8	9	7	4
4	8	3	7	9	5	6	2	1
6	9	7	4	2	1	5	8	3
2	5	1	3	8	7	4	9	6
9	7	8	1	6	4	3	5	2
3	6	4	9	5	2	7	1	8
7	1	2	5	4	3	8	6	9
5	4	6	8	1	9	2	3	7
8	3	9	2	7	6	1	4	5



## Mirror Sudoku

1 point

Apply standard Sudoku rules.

The four corner boxes (top left, top right, bottom left, bottom right) all contain the same digit in symmetrical positions with respect to the center of the grid.

3	5	6	1	4	2
4	1	2	5	3	6
5	2	4	3	6	1
1	6	3	4	2	5
6	3	5	2	1	4
2	4	1	6	5	3

## Mirror Sudoku

7 points

Apply standard Sudoku rules.

The four corner boxes (top left, top right, bottom left, bottom right) all contain the same digit in symmetrical positions with respect to the center of the grid.

3	8	4	7	1	2	5	9	6
9	2	7	5	6	4	8	3	1
5	6	1	8	9	3	2	7	4
8	4	6	1	3	7	9	5	2
2	5	9	6	4	8	3	1	7
7	1	3	9	2	5	6	4	8
4	7	2	3	8	9	1	6	5
1	3	8	4	5	6	7	2	9
6	9	5	2	7	1	4	8	3

## Twin Givens Sudoku

2 points

Place digits from 1-4 in each row, column and 2x3 outlined box.

Two cells will remain empty as these are twins and of the same value. No two twins can touch each other in orthogonal directions.

Enter X for blank cells, while entering the answer key.

1	2		3	4	
4		3	2		1
	3	4		1	2
2		1	4		3
3	4		1	2	
	1	2		3	4

## Twin Givens Sudoku

8 points

Place digits from 1-7 in each row, column and 3x3 outlined box.

Two cells will remain empty as these are twins and of the same value. No two twins can touch each other in orthogonal directions.

Enter X for blank cells, while entering the answer key.

2		4	1	7	3		5	6
7	1	6	5	2		4	3	
5		3	4		6	7	2	1
	4	5	6	1	7	3		2
1	6		3	4	2		7	5
3	2	7		5		1	6	4
6	3	1	7		5	2	4	
	7	2		6	4	5	1	3
4	5		2	3	1	6		7