

Standard Sudoku

Place a digit from 1 to 6 in each empty cell so that each digit appears exactly once in each row, column and 2X3 box.

1 point

B

6					5
			1		
		2		4	
			3		
A	6				
1					2

1 point

D

C					
		5	3		
	5			1	
6					2
	1			6	
3					4

1 point

F

6			4		
		3			
	2			5	
1			3		
		1			6
E				2	

1 point

H

	1				
		2			3
2			3		
		3			5
1			4		
G				5	

Standard Sudoku

3 points

Place a digit from 1 to 8 in each empty cell so that each digit appears exactly once in each row, column and 2X4 box.

1	2			6			5
		3	4				
		8		5	6		
						7	8
8	6						
		4	2		1		
				7	5		
5			7			3	1

Standard Sudoku

5 points

Place a digit from 1 to 9 in each empty cell so that each digit appears exactly once in each row, column and 3X3 box.

5								
	1	2	3			8		
	8		4		5		3	
	7	6	5			1		
		1			2	3	4	
	4		6		9		5	
		9			8	7	6	
								3

Standard Sudoku

3 points

Place a digit from 1 to 9 in each empty cell so that each digit appears exactly once in each row, column and 3X3 box.

5						1	2	
							3	4
		1	2					5
6			3	4				
	3			5	6			
					7	8		
2		4				9		
	6			2				
		8			4			6

Standard Sudoku

5 points

Place a digit from 1 to 9 in each empty cell so that each digit appears exactly once in each row, column and 3X3 box.

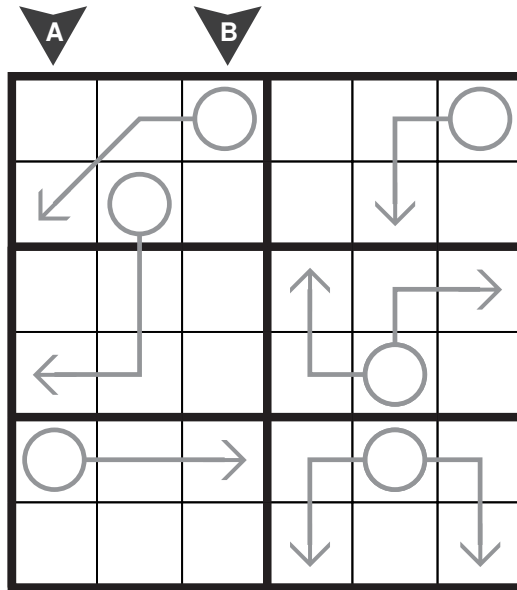
			4	5				8
	2	3		6				
	1				7			
2				9	8			
4	6		1					
		5	3		2	1	8	
					3		7	
					4	5	6	
7								9

Arrow Sudoku

7 points

Apply standard Sudoku rules.

The sum of the digits along the path of each arrow must equal the digit in the circled cell. Digits can repeat within an arrow shape.

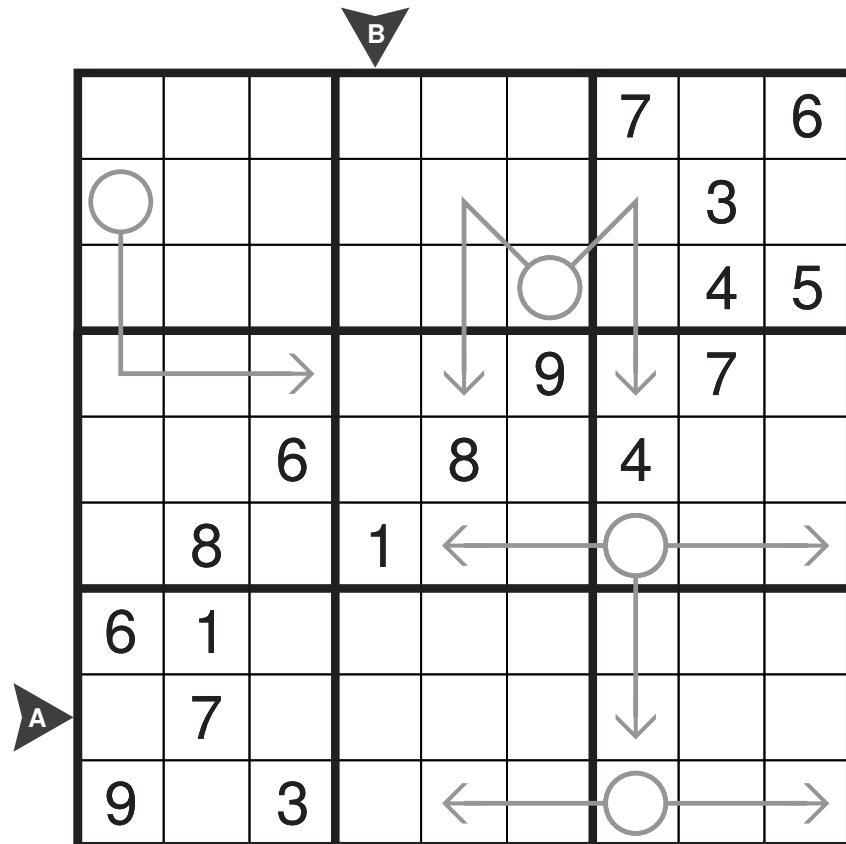


Arrow Sudoku

11 points

Apply standard Sudoku rules.

The sum of the digits along the path of each arrow must equal the digit in the circled cell. Digits can repeat within an arrow shape.



Killer Sudoku

4 points

Apply standard Sudoku rules.

The sum of digits in cells inside every cage must equal the total given for the cage at the upper left cell. Digits do not repeat inside a cage.

6	11	8	21		
		10		10	
			8		6
11					

Killer Sudoku

12 points

Apply standard Sudoku rules.

The sum of digits in cells inside every cage must equal the total given for the cage at the upper left cell. Digits do not repeat inside a cage.

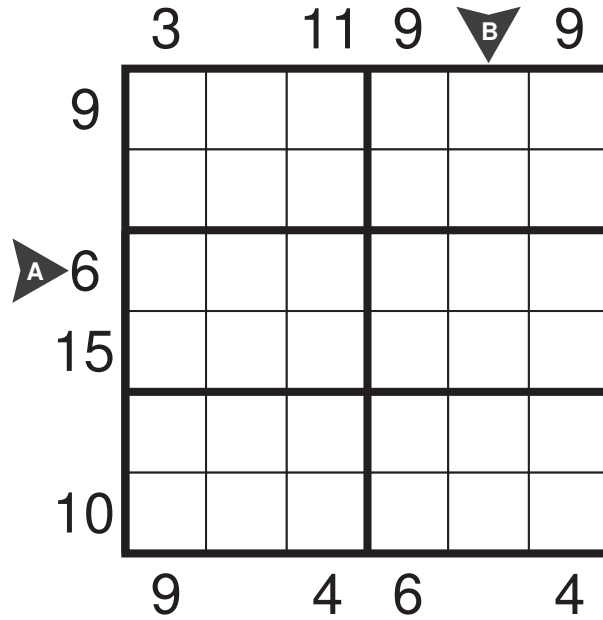
	15		8	5	2			5
20					25			
				10				10
		10			15			
	4			15		5	5	15
10								
		5		8		6		
9		13		14		11		
	17		3		13		9	

Frame Sudoku

2 points

Apply standard Sudoku rules.

Numbers outside the grid equal the sum of the digits appearing in the first box (till the next bold line) seen from that edge of the grid.

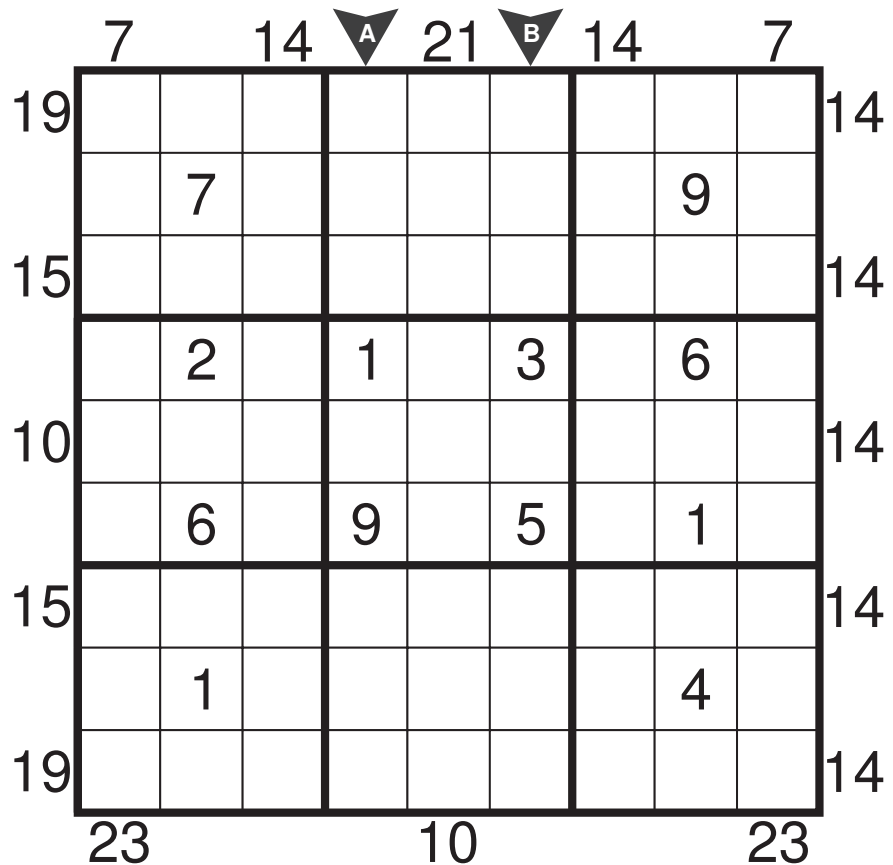


Frame Sudoku

13 points

Apply standard Sudoku rules.

Numbers outside the grid equal the sum of the digits appearing in the first box (till the next bold line) seen from that edge of the grid.

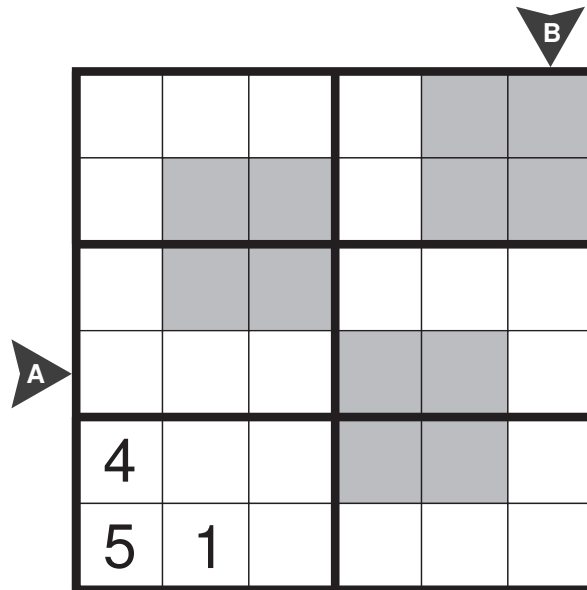


Product Sudoku

3 points

Apply standard Sudoku rules.

For each shaded 2x2 area, the two-digit number formed in the bottom row is the product of the two digits in the top row.

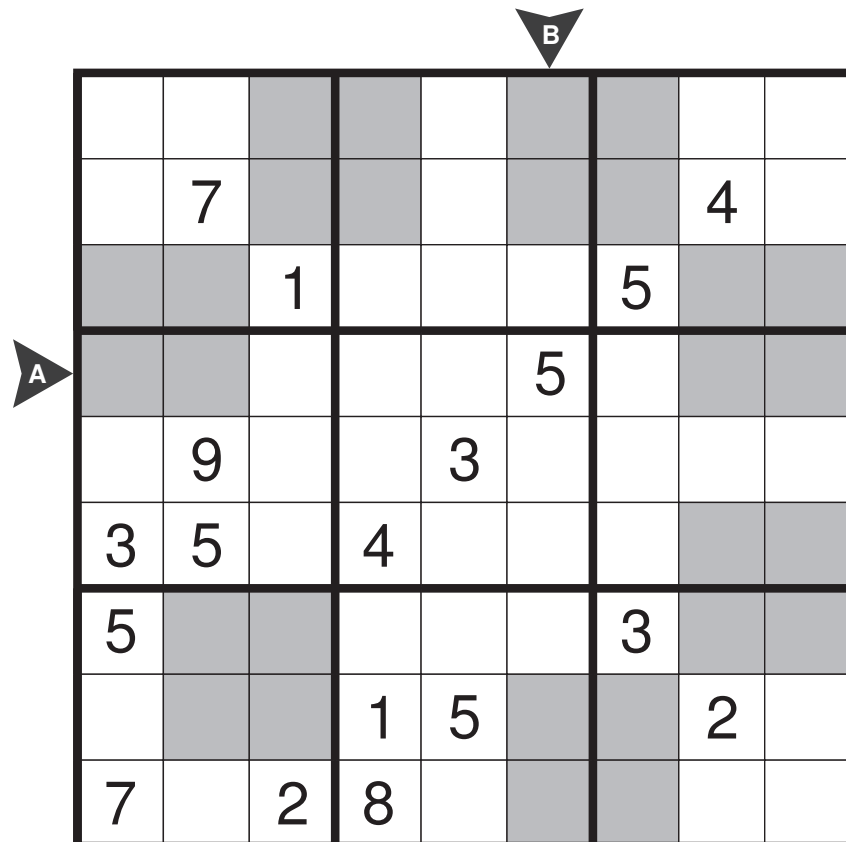


Product Sudoku

9 points

Apply standard Sudoku rules.

For each shaded 2x2 area, the two-digit number formed in the bottom row is the product of the two digits in the top row.

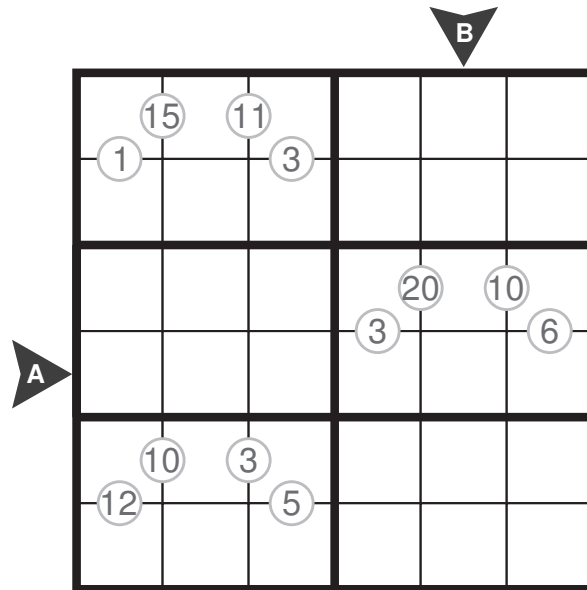


Mathdoku

4 points

Apply standard Sudoku rules.

In some 2x3 boxes, there are four circled numbers. For each box, these numbers are a result of a different mathematical operation (+, -, *, /) between the digits on each side of the circle.

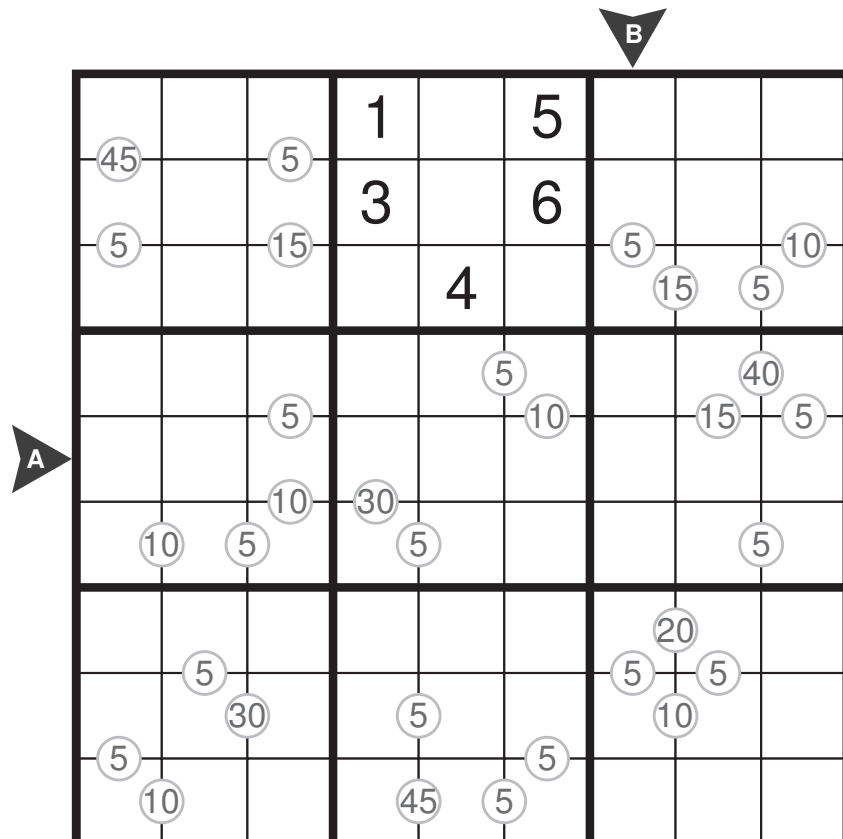


Mathdoku

15 points

Apply standard Sudoku rules.

In some 3x3 boxes, there are four circled numbers. For each box, these numbers are a result of a different mathematical operation (+, -, *, /) between the digits on each side of the circle.



Standard

B

6	4	1	2	3	5	
5	2	3	1	6	4	
3	1	2	5	4	6	
4	5	6	3	2	1	
A	2	6	5	4	1	3
1	3	4	6	5	2	

Standard

D

C	1	3	2	6	4	5
4	6	5	3	2	1	
2	5	3	4	1	6	
6	4	1	5	3	2	
5	1	4	2	6	3	
3	2	6	1	5	4	

Standard

F

6	5	2	4	1	3	
4	1	3	2	6	5	
3	2	4	6	5	1	
1	6	5	3	4	2	
2	4	1	5	3	6	
E	5	3	6	1	2	4

Standard

H

3	1	6	5	4	2	
5	4	2	6	1	3	
2	5	1	3	6	4	
4	6	3	1	2	5	
1	2	5	4	3	6	
G	6	3	4	2	5	1

Standard

B

1	2	7	8	6	3	4	5	
6	5	3	4	1	2	8	7	
4	7	8	3	5	6	1	2	
2	1	5	6	3	4	7	8	
A	8	6	1	5	4	7	2	3
7	3	4	2	8	1	5	6	
3	8	2	1	7	5	6	4	
5	4	6	7	2	8	3	1	

Standard

B

5	6	3	8	2	7	4	1	9	
4	1	2	3	9	6	8	7	5	
9	8	7	4	1	5	6	3	2	
2	7	6	5	4	3	1	9	8	
A	3	9	4	7	8	1	5	2	6
8	5	1	9	6	2	3	4	7	
7	4	8	6	3	9	2	5	1	
1	3	9	2	5	8	7	6	4	
6	2	5	1	7	4	9	8	3	

Standard

5	7	3	4	6	9	1	2	8
9	2	6	5	8	1	7	3	4
8	4	1	2	7	3	6	9	5
6	8	7	3	4	2	5	1	9
1	3	9	8	5	6	4	7	2
4	5	2	1	9	7	8	6	3
2	1	4	6	3	5	9	8	7
7	6	5	9	2	8	3	4	1
3	9	8	7	1	4	2	5	6

Standard

6	9	7	4	5	1	2	3	8
5	2	3	8	6	9	7	4	1
8	1	4	2	3	7	6	9	5
2	3	1	6	9	8	4	5	7
4	6	8	1	7	5	9	2	3
9	7	5	3	4	2	1	8	6
1	5	6	9	2	3	8	7	4
3	8	9	7	1	4	5	6	2
7	4	2	5	8	6	3	1	9

Arrow

2	4	5	6	1	3
1	6	3	4	2	5
5	2	6	3	4	1
3	1	4	2	5	6
4	3	1	5	6	2
6	5	2	1	3	4

Killer

2	1	5	6	4	3
4	6	3	2	5	1
3	4	6	1	2	5
5	2	1	4	3	6
1	5	4	3	6	2
6	3	2	5	1	4

Arrow

1	3	9	2	5	4	7	8	6
8	4	5	7	1	6	2	3	9
2	6	7	9	3	8	1	4	5
3	2	1	6	4	9	5	7	8
7	9	6	5	8	3	4	2	1
5	8	4	1	2	7	9	6	3
6	1	2	8	7	5	3	9	4
4	7	8	3	9	1	6	5	2
9	5	3	4	6	2	8	1	7

Killer

1	6	9	8	4	2	5	7	3
5	3	4	6	1	7	9	8	2
8	7	2	9	3	5	4	1	6
9	5	3	2	7	8	1	6	4
6	4	7	3	9	1	2	5	8
2	8	1	5	6	4	3	9	7
7	1	5	4	8	3	6	2	9
4	2	6	7	5	9	8	3	1
3	9	8	1	2	6	7	4	5

Frame

	3		11	9	B	9
9	1	3	5	6	2	4
	2	4	6	3	1	5
A	6	3	1	2	5	4
15	6	5	4	1	3	2
	4	6	1	2	5	3
10	5	2	3	4	6	1
	9		4	6		4

Product

				B	
	2	5	1	6	4
	3	4	6	5	1
	6	2	4	3	5
A	1	3	5	2	6
	4	6	3	1	2
	5	1	2	4	3

Frame

	7		14	A	21	B	14		7
19	4	9	6	3	7	2	5	8	1
	1	7	3	4	5	8	6	9	2
15	2	8	5	6	9	1	3	7	4
	7	2	9	1	4	3	8	6	5
10	5	4	1	7	8	6	9	2	3
	3	6	8	9	2	5	4	1	7
15	6	5	4	8	1	7	2	3	9
	8	1	2	5	3	9	7	4	6
19	9	3	7	2	6	4	1	5	8
	23		10		23				

Product

				B					
	4	8	5	7	6	9	2	3	1
	9	7	3	5	2	1	8	4	6
	2	6	1	3	4	8	5	7	9
A	1	2	7	9	8	5	4	6	3
	6	9	4	2	3	7	1	8	5
	3	5	8	4	1	6	7	9	2
	5	4	9	6	7	2	3	1	8
	8	3	6	1	5	4	9	2	7
	7	1	2	8	9	3	6	5	4

Mathdoku

Mathdoku

			B	
	3	15	5	11
	1		3	
	4	1	2	6
	1	2	3	5
A	5	6	4	2
	6	10	4	3
	2	3	5	1

				B			
	9	2	3	1	8	5	7
	5	4	8	3	7	6	1
	1	6	7	2	4	9	5
	6	9	1	4	2	5	7
A	4	8	5	6	9	3	2
	3	10	7	5	2	5	1
	8	1	9	7	6	2	4
	2	5	30	8	5	3	4
	7	10	3	4	9	45	5