

Standard Sudoku

Place a digit from 1 to 6 in each empty cell so that each digit appears exactly once in each row, column and 2X3 box.

1 points

A **B**

	4	5			
2	3				
1					
					4
				4	3
			1	2	

1 points

C **D**

		2			
	5		2		
4				3	
3				1	
	4		5		

2 points

F **E**

		4	6		
	6			3	
4					2
5					4
2					6

1 points

H **G**

	2	1			
	1	4			
					5
				3	4
			1	2	

Standard Sudoku

3 points

Place a digit from 1 to 8 in each empty cell so that each digit appears exactly once in each row, column and 2X4 box.

	1	2	3				
	3	4	5				
	6	7	2				1
						6	8
					7	3	
				1	8		
			7	2			

Standard Sudoku

5 points

Place a digit from 1 to 9 in each empty cell so that each digit appears exactly once in each row, column and 3X3 box.

	1	2	3	4				
	5	6	7	8				
	9	1	2	3				
	4	5	6	7				2
							8	5
						4	9	
					7	1		
				2	1			

Standard Sudoku

6 points

Place a digit from 1 to 9 in each empty cell so that each digit appears exactly once in each row, column and 3X3 box.

3								9
		1	2		5	7		
		3	4		9	1		
		5	6		2	8		
		2	1		3	9		
		7	8		1	2		
4								3

Standard Sudoku

5 points

Place a digit from 1 to 9 in each empty cell so that each digit appears exactly once in each row, column and 3X3 box.

1			6		3			8
2			5		4			7
	3	4				5	6	
		3	4		8	9		
	2			5			1	
	1			6			2	
		8	7		5	3		
9								6

Even Sudoku

3 points

Apply standard Sudoku rules.

Shaded cells must contain even digits.

A						
B						
	2					4
		1	4	2	3	

Even Sudoku

8 points

Apply standard Sudoku rules.

Shaded cells must contain even digits.

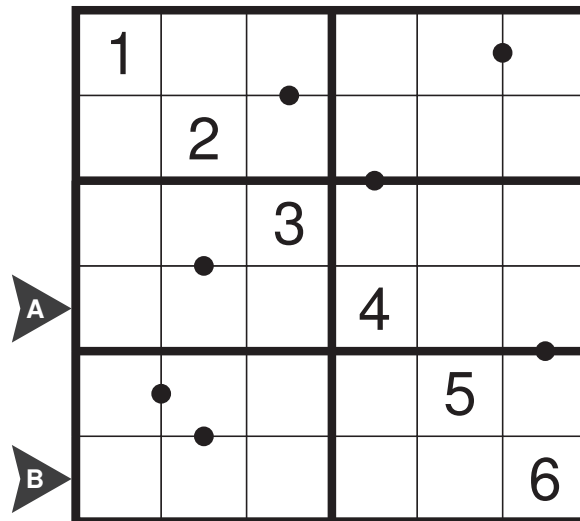
	3	2	9	1	8	4	7	
	9			8			3	
	1			7			6	
	4	8	6	5	2	9	1	
A								
B								

Odd Sum Pair

5 points

Apply standard
Sudoku rules.

A dot between two
cells implies the
sum of digits in
those 2 cells is odd.

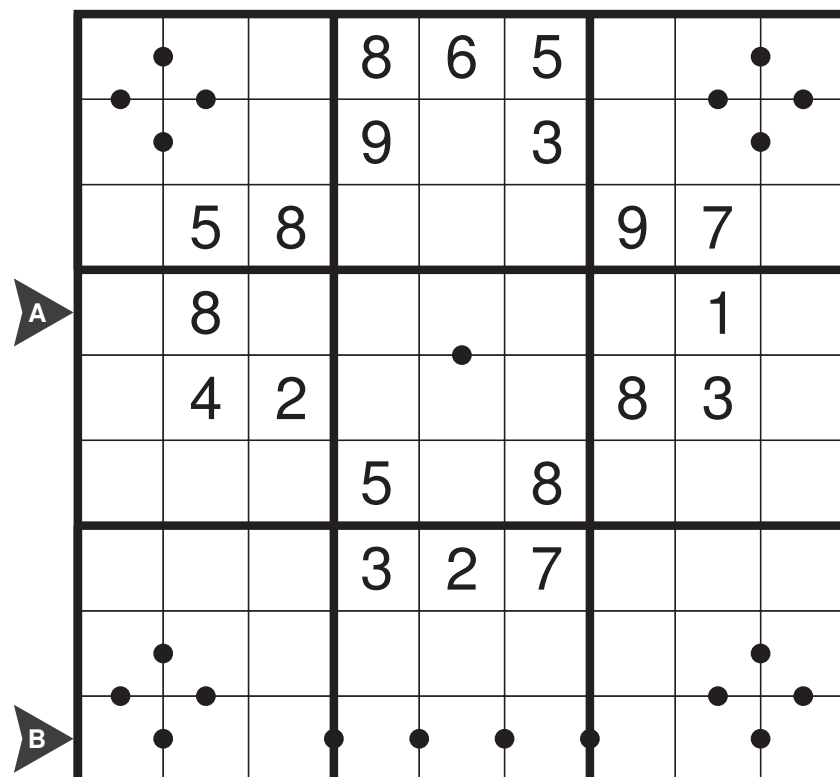


Odd Sum Pair

11 points

Apply standard
Sudoku rules.

A dot between two
cells implies the
sum of digits in
those 2 cells is odd.

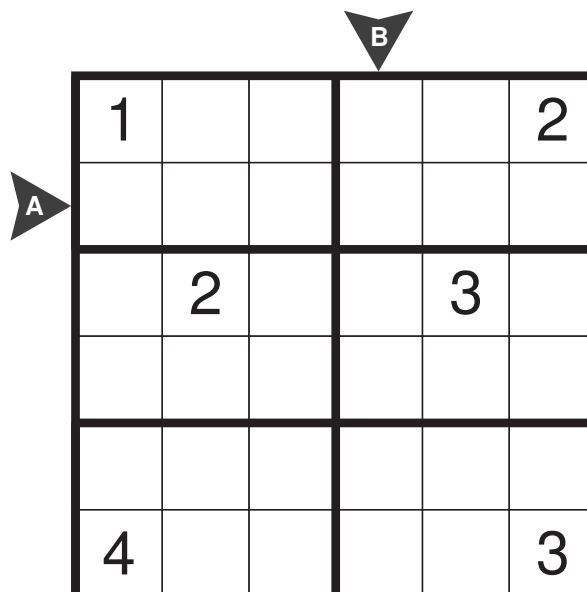


No Even Neighbours

1 points

Apply standard Sudoku rules.

No two cells containing even digits can share an edge.

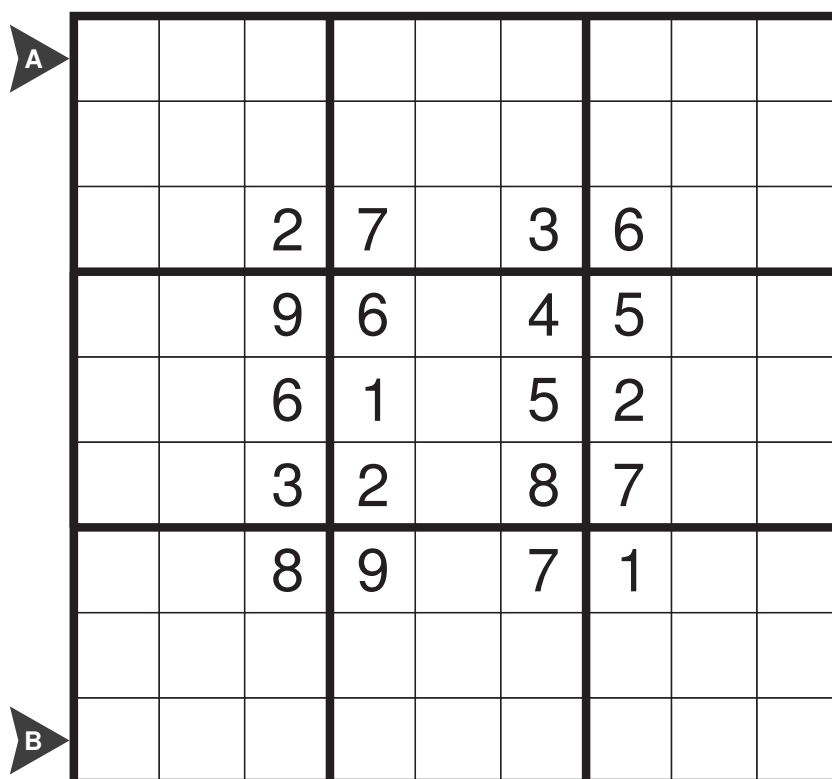


No Even Neighbours

10 points

Apply standard Sudoku rules.

No two cells containing even digits can share an edge.



Quadro Sudoku

5 points

Apply standard Sudoku rules.

No 2x2 square can contain only odd or only even numbers.

A						
		5	1			
	5			4		
	2					3
	4			3		
B						

Quadro Sudoku

13 points

Apply standard Sudoku rules.

No 2x2 square can contain only odd or only even numbers.

			A	2				
				5	8	9		
		3		4		7	1	
	4	6					5	3
8	1							2
5								9
	6							5
		1					2	

Standard

3	2	4	7	6	8	5	1	9
5	7	6	9	1	4	3	2	8
9	8	1	2	3	5	7	4	6
7	6	3	4	8	9	1	5	2
1	9	5	6	7	2	8	3	4
8	4	2	1	5	3	9	6	7
6	3	7	8	4	1	2	9	5
2	5	8	3	9	6	4	7	1
4	1	9	5	2	7	6	8	3

Standard

1	5	9	6	7	3	2	4	8
2	8	6	5	9	4	1	3	7
7	3	4	1	8	2	5	6	9
4	9	1	2	3	7	6	8	5
5	6	3	4	1	8	9	7	2
8	2	7	9	5	6	4	1	3
3	1	5	8	6	9	7	2	4
6	4	8	7	2	5	3	9	1
9	7	2	3	4	1	8	5	6

Even

6	5	2	3	4	1
3	4	1	6	5	2
4	3	6	1	2	5
1	2	5	4	6	3
2	6	3	5	1	4
5	1	4	2	3	6

Odd Sum Pair

1	3	6	2	4	5
4	2	5	6	3	1
6	4	3	5	1	2
2	5	1	4	6	3
3	6	2	1	5	4
5	1	4	3	2	6

Even

4	7	9	2	3	6	1	5	8
1	8	6	5	4	7	2	9	3
5	3	2	9	1	8	4	7	6
6	9	7	4	8	1	5	3	2
2	1	5	3	7	9	8	6	4
3	4	8	6	5	2	9	1	7
7	6	1	8	9	4	3	2	5
9	5	4	7	2	3	6	8	1
8	2	3	1	6	5	7	4	9

Odd Sum Pair

2	7	9	8	6	5	3	4	1
1	6	4	9	7	3	2	5	8
3	5	8	2	1	4	9	7	6
6	8	3	7	4	2	5	1	9
5	4	2	6	9	1	8	3	7
9	1	7	5	3	8	6	2	4
4	9	6	3	2	7	1	8	5
7	2	5	1	8	9	4	6	3
8	3	1	4	5	6	7	9	2

No Even Neighbours

			B			
	1	4	3	6	5	2
A	2	5	6	3	4	1
	5	2	1	4	3	6
	6	3	4	1	2	5
	3	6	5	2	1	4
	4	1	2	5	6	3

Quadro

A	1	6	2	3	5	4
	4	3	5	1	2	6
	3	5	6	2	4	1
	2	1	4	5	6	3
	5	4	1	6	3	2
B	6	2	3	4	1	5

No Even Neighbours

A	6	1	7	5	2	9	4	3	8
	3	8	5	4	1	6	9	2	7
	4	9	2	7	8	3	6	1	5
	1	2	9	6	7	4	5	8	3
	8	7	6	1	3	5	2	9	4
	5	4	3	2	9	8	7	6	1
	2	3	8	9	4	7	1	5	6
	7	6	1	8	5	2	3	4	9
B	9	5	4	3	6	1	8	7	2

Quadro

			A			B			
6	7	8	1	2	3	9	4	5	
1	2	4	5	8	9	6	7	3	
9	5	3	4	6	7	1	8	2	
7	4	6	2	9	8	5	3	1	
8	1	9	3	5	6	7	2	4	
5	3	2	7	4	1	8	6	9	
3	6	7	9	1	2	4	5	8	
4	8	1	6	3	5	2	9	7	
2	9	5	8	7	4	3	1	6	

Odd Even Count

			B			
	6	2	1	3	5	4
	4	3	5	1	2	6
	2	4	3	5	6	1
	1	5	6	4	3	2
A	5	1	2	6	4	3
	3	6	4	2	1	5

Odd Even Count

			B						
	9	6	4	3	7	8	2	5	1
	8	2	3	6	5	1	9	4	7
	7	5	1	2	9	4	3	8	6
	2	3	7	8	1	5	4	6	9
A	6	4	8	9	2	3	7	1	5
	5	1	9	4	6	7	8	2	3
	4	7	5	1	8	9	6	3	2
	1	8	2	7	3	6	5	9	4
	3	9	6	5	4	2	1	7	8