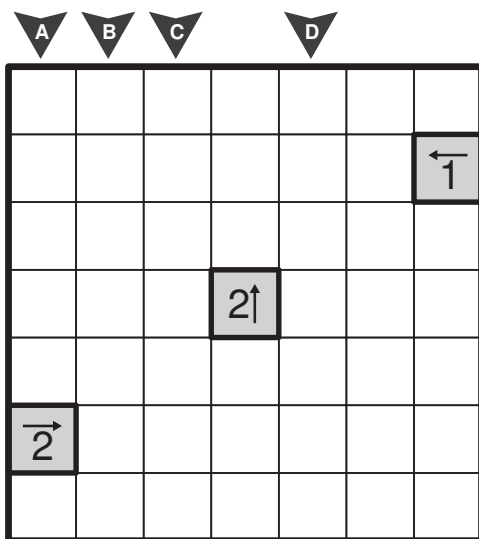


Rule

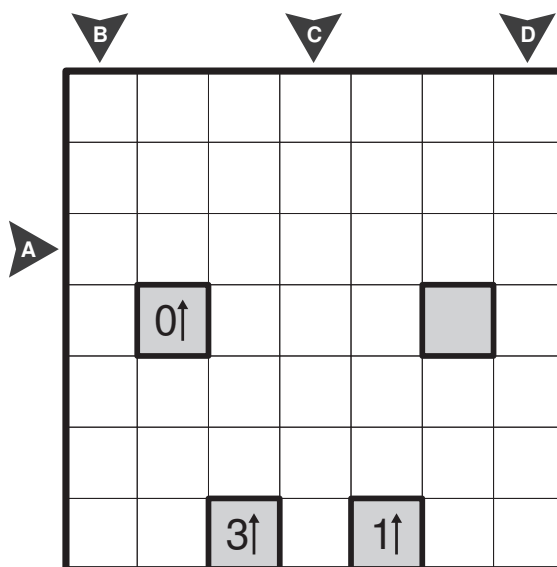
Blacken some white cells and then draw a single closed loop (without intersections or crossings) through all remaining white cells. Blackened cells cannot share an edge with each other. Some cells are outlined and in gray and cannot be part of the loop. Numbered arrows in such cells indicate the total number of blackened cells that exist in that direction in the grid.

Answer Key format: For each marked row/column, enter the length of the longest loop segment.



1

Introduction
2 points



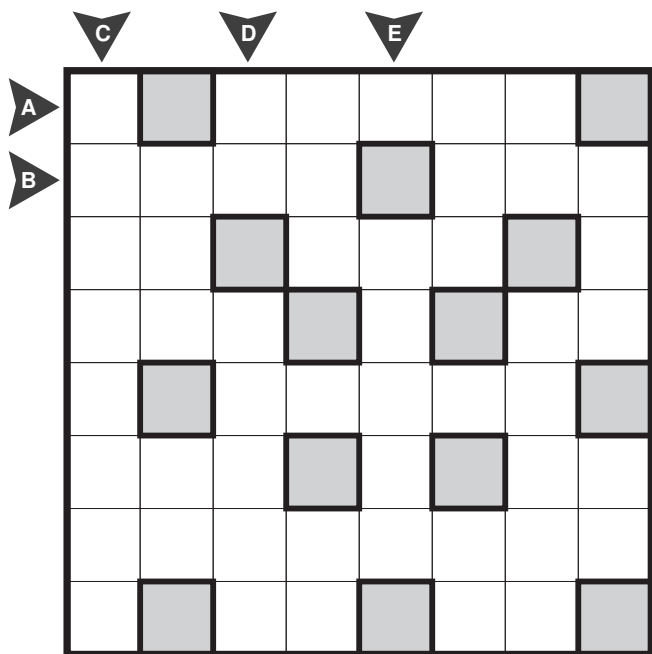
2

Introduction
2 points

Rule

Blacken some white cells and then draw a single closed loop (without intersections or crossings) through all remaining white cells. Blackened cells cannot share an edge with each other. Some cells are outlined and in gray and cannot be part of the loop. Numbered arrows in such cells indicate the total number of blackened cells that exist in that direction in the grid.

Answer Key format: For each marked row/column, enter the length of the longest loop segment.

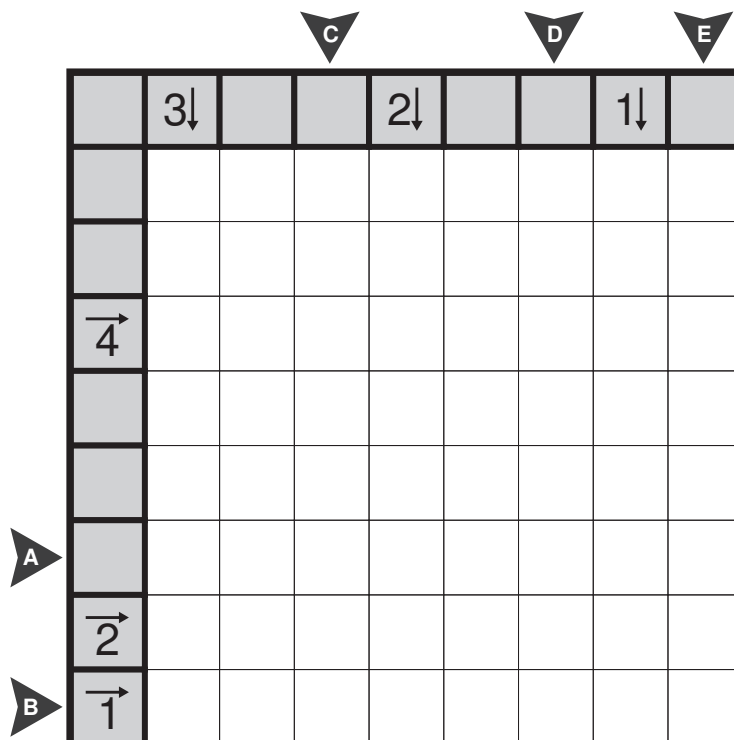


3

Intermediate
4 points

4

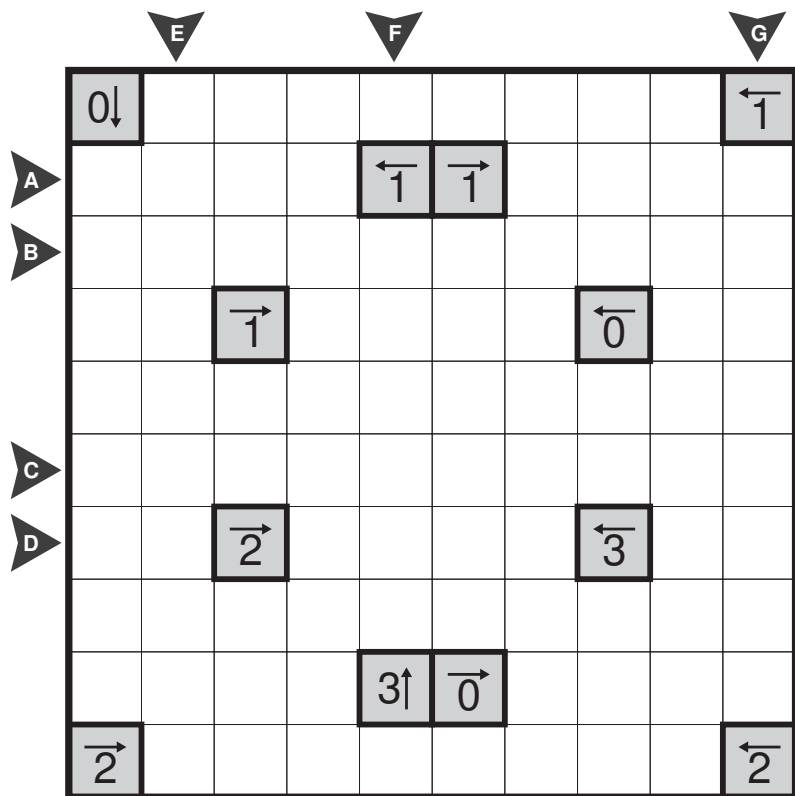
Intermediate
5 points



Rule

Blacken some white cells and then draw a single closed loop (without intersections or crossings) through all remaining white cells. Blackened cells cannot share an edge with each other. Some cells are outlined and in gray and cannot be part of the loop. Numbered arrows in such cells indicate the total number of blackened cells that exist in that direction in the grid.

Answer Key format: For each marked row/column, enter the length of the longest loop segment.

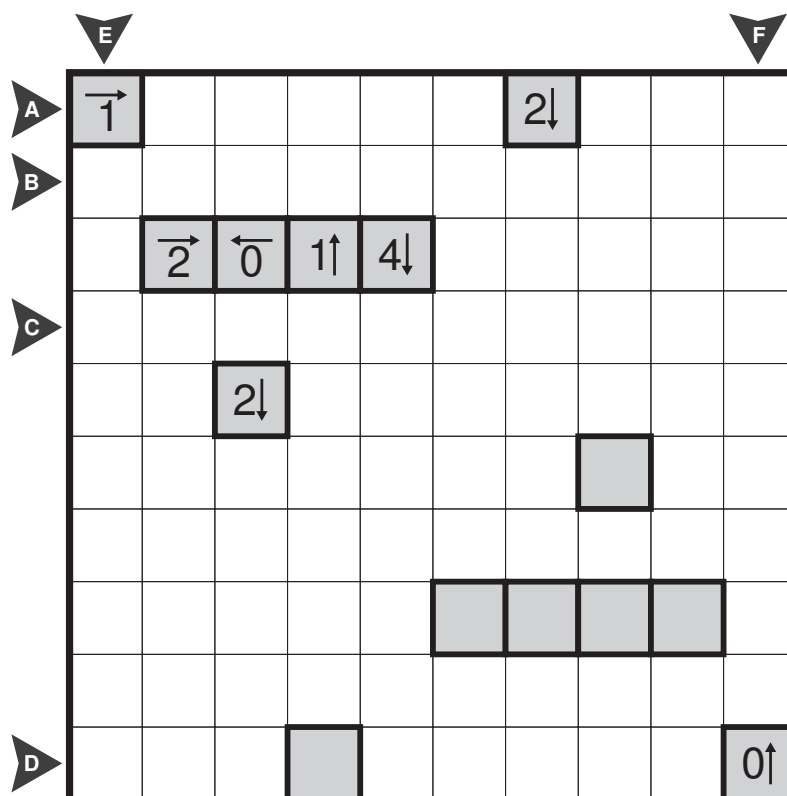


5

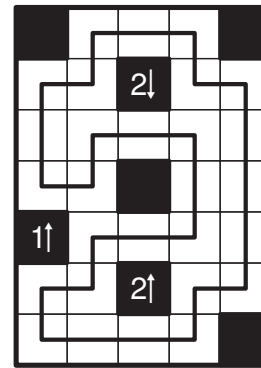
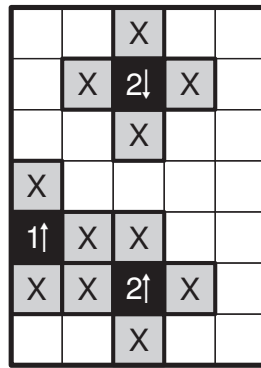
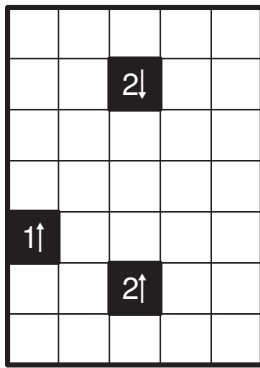
**Challenging
11 points**

6

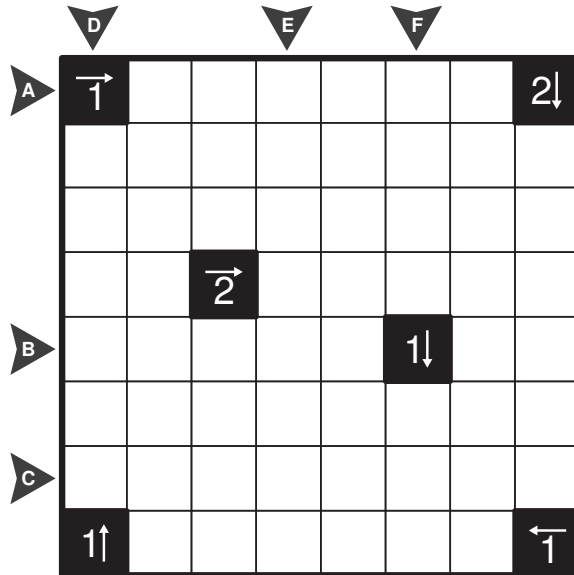
**Challenging
9 points**



Solved
Example for
Exploratory
puzzles



Answer Key format: For each marked row/column, enter the length of the longest loop segment.

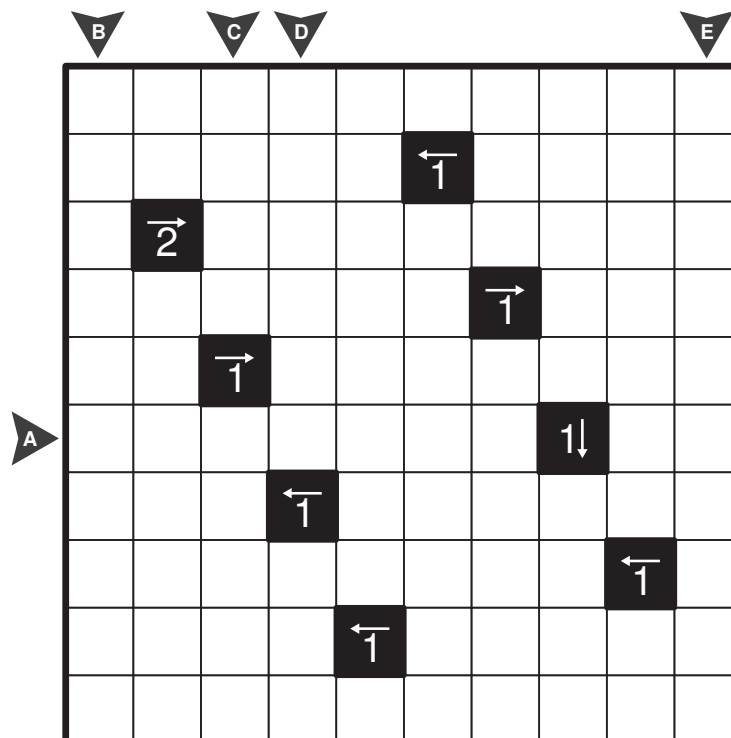


7

Exploratory
3 points

8

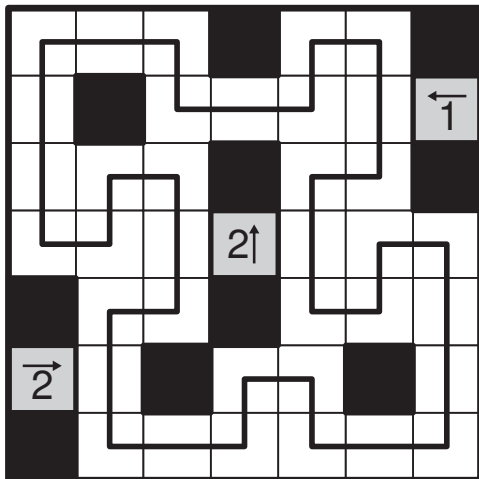
Exploratory
14 points



Rule

Blacken some white cells and then draw a single closed loop (without intersections or crossings) through all remaining white cells. Blackened cells cannot share an edge with each other. Some cells are outlined and in gray and cannot be part of the loop. Numbered arrows in such cells indicate the total number of blackened cells that exist in that direction in the grid.

Answer Key format: For each marked row/column, enter the length of the longest loop segment.

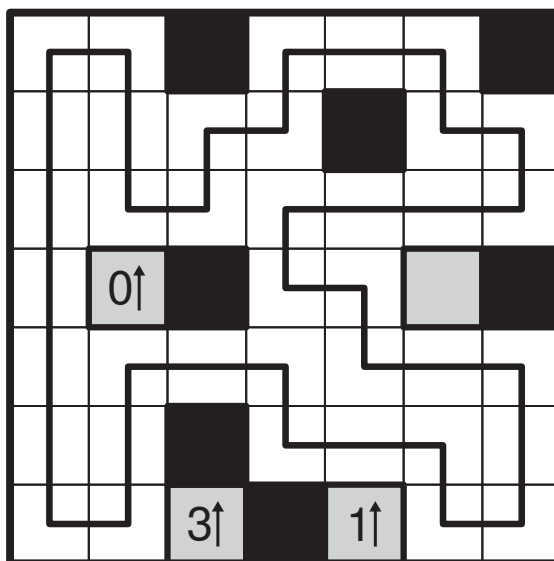


1

Introduction
2 points

2

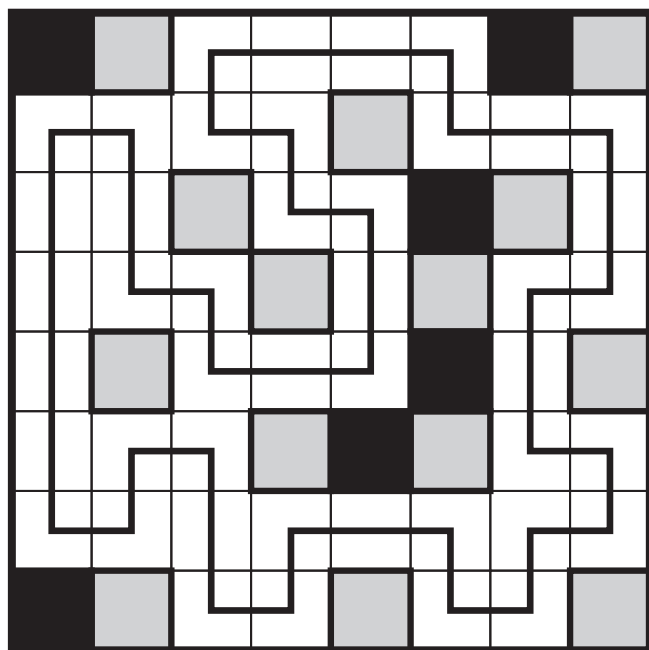
Introduction
2 points



Rule

Blacken some white cells and then draw a single closed loop (without intersections or crossings) through all remaining white cells. Blackened cells cannot share an edge with each other. Some cells are outlined and in gray and cannot be part of the loop. Numbered arrows in such cells indicate the total number of blackened cells that exist in that direction in the grid.

Answer Key format: For each marked row/column, enter the length of the longest loop segment.

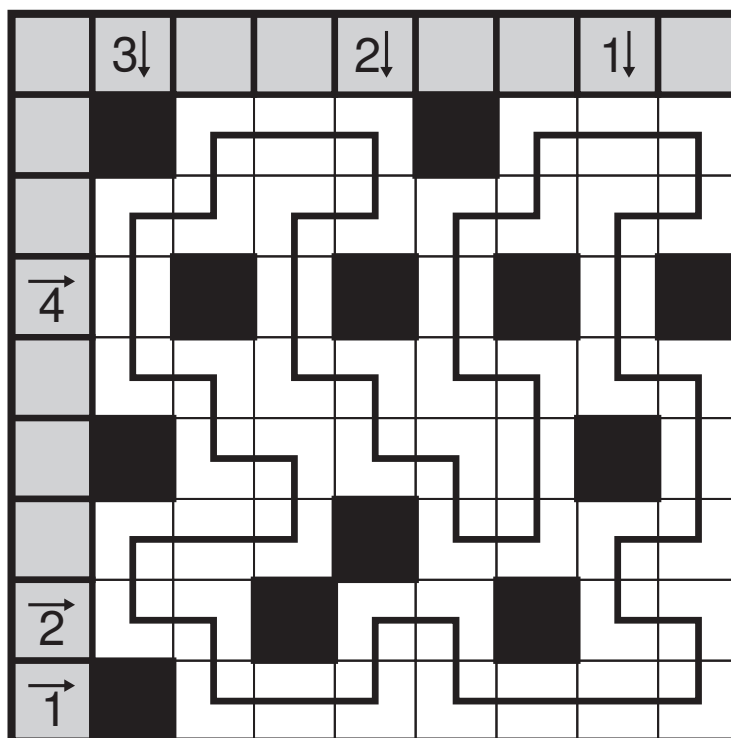


3

Intermediate
4 points

4

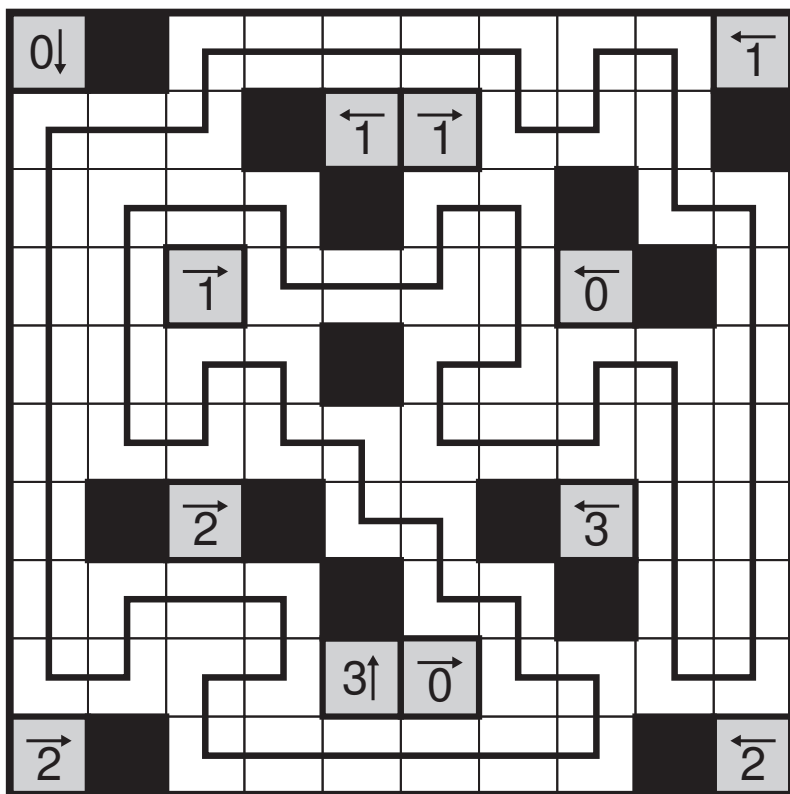
Intermediate
5 points



Rule

Blacken some white cells and then draw a single closed loop (without intersections or crossings) through all remaining white cells. Blackened cells cannot share an edge with each other. Some cells are outlined and in gray and cannot be part of the loop. Numbered arrows in such cells indicate the total number of blackened cells that exist in that direction in the grid.

Answer Key format: For each marked row/column, enter the length of the longest loop segment.

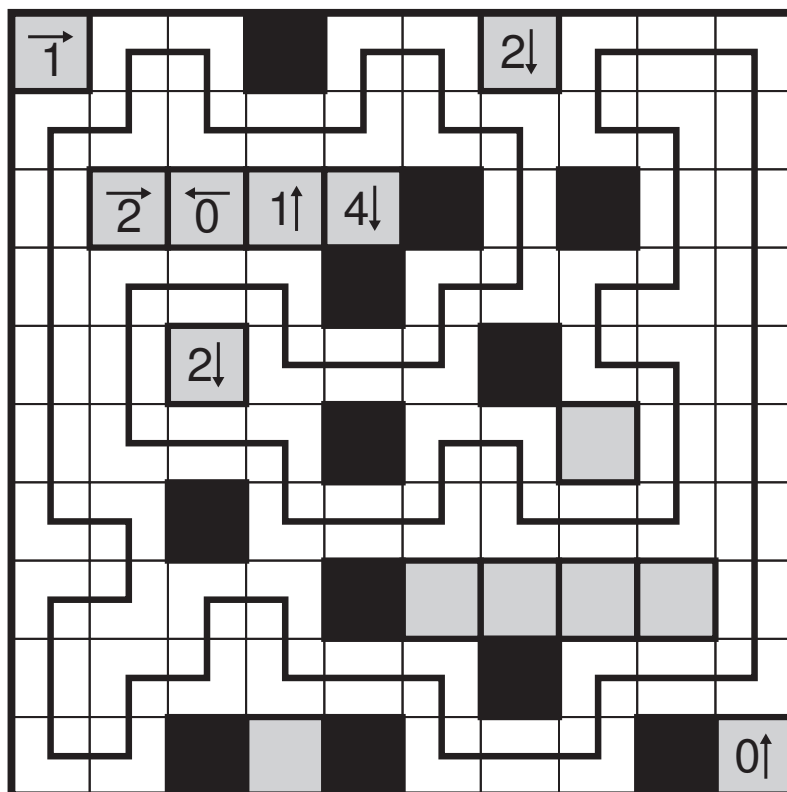


5

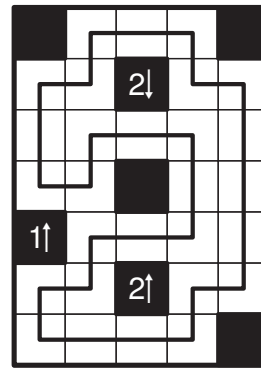
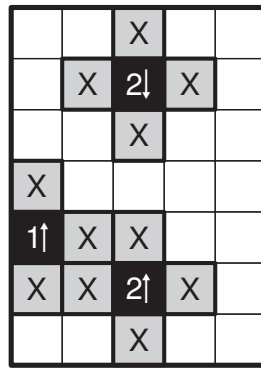
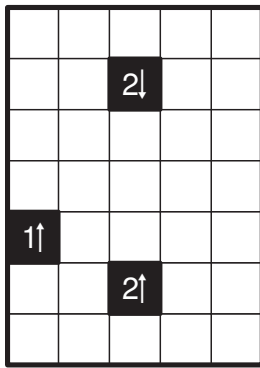
Challenging
11 points

6

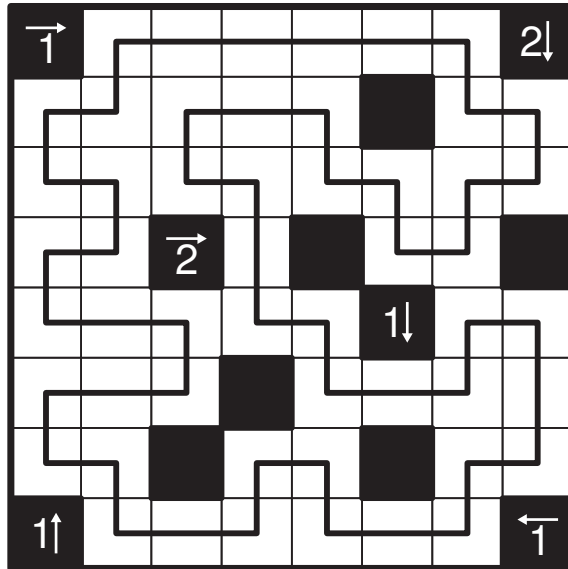
Challenging
9 points



Solved
Example for
Exploratory
puzzles



Answer Key format: For each marked row/column, enter the length of the longest loop segment.



7

Exploratory
3 points

8

Exploratory
14 points

