

LMI Beginners' Puzzle Contest

28th August to 2nd September 2014

Quick Summary

- There will be 2 rounds, each round consisting of 8 puzzles of one type.
- Time bonus (2 points per minute saved) will be awarded, if a round is completed before 40 minutes
- Category bonus will be awarded if both puzzles in a category solved within 40 minutes
- Puzzles submitted after 40 minutes will be worth half of its original points
- "Instant Grading" will be enabled, that means
 - Upon submitting a puzzle, you will immediately know if it is correct or not
 - Every wrong submission will be penalized by adding 1 minute to your submission time
- Details available at <http://logicmastersindia.com/forum/forums/thread-view.asp?pid=16435>
- The following Beginners' Contest doubles up as a Patron reward. A 15\$ Patron gets to choose one puzzle genre for a Beginners' Contest to be held within 6 months. The choice that has been acted upon here is Cave. We thank our patron, Grandmaster Puzzles, for the continued support, and hope that this contest satisfactorily covers the Cave genre.

Points Table

Category	#	Cave		Yajilin	
		Points	Category Bonus	Points	Category Bonus
Introductory	1	2	5	2	4
Introductory	2	3		2	
Intermediate	3	6	7	4	7
Intermediate	4	5		5	
Challenging	5	9	9	11	9
Challenging	6	12		9	
Exploratory	7	6	9	3	10
Exploratory	8	7		14	
		50	30	50	30

Note about Exploratory Puzzles

The rules will be slightly different from the base puzzles. We will provide a sample puzzle and its solution. Players need to deduce the rules from the solved example.

Submission page: <http://logicmastersindia.com/BeginnersPuzzle/201408/>

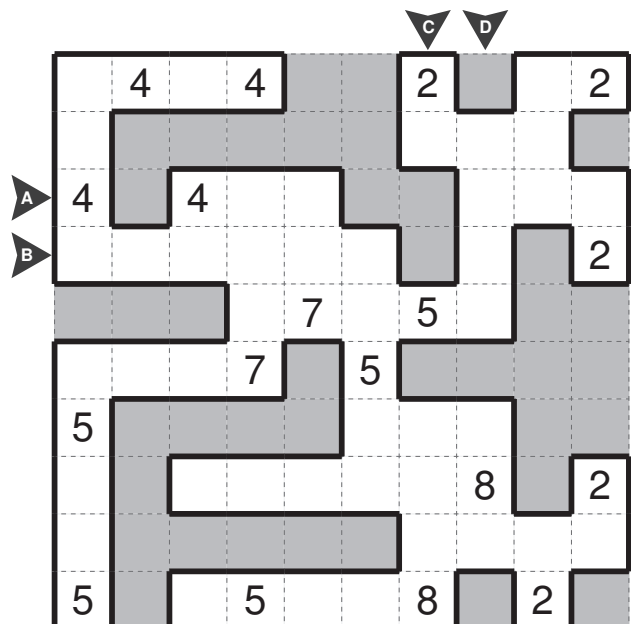
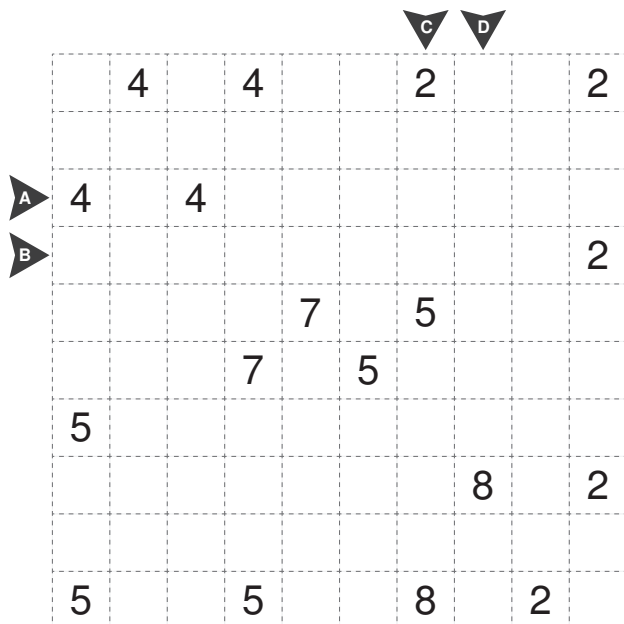
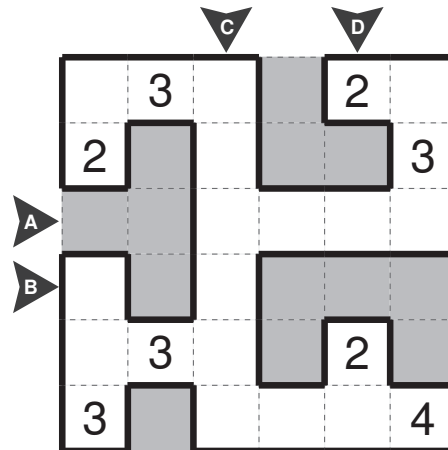
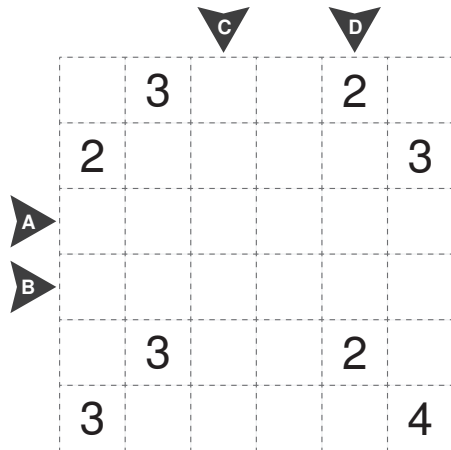
Forum Discussion: <http://logicmastersindia.com/forum/forums/thread-view.asp?pid=16435>

Cave

Rule

Shade some cells to leave behind a single connected group — the cave — with no enclosed, shaded cells. In other words, all shaded cells must be connected by other shaded cells to an edge of the grid. All numbered cells must be a part of the cave, with each number indicating the total count of cells connected vertically and horizontally to the numbered cell including the cell itself.

Answer Key format: For each marked row/column, enter the longest continuous group of cells inside the cave.



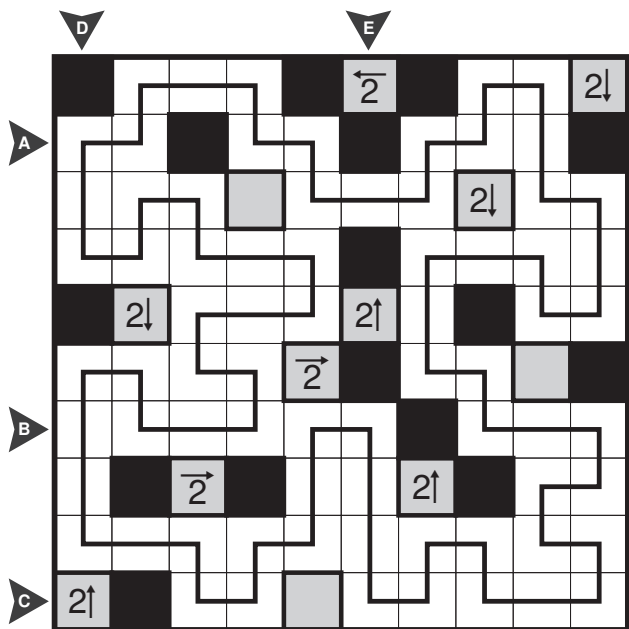
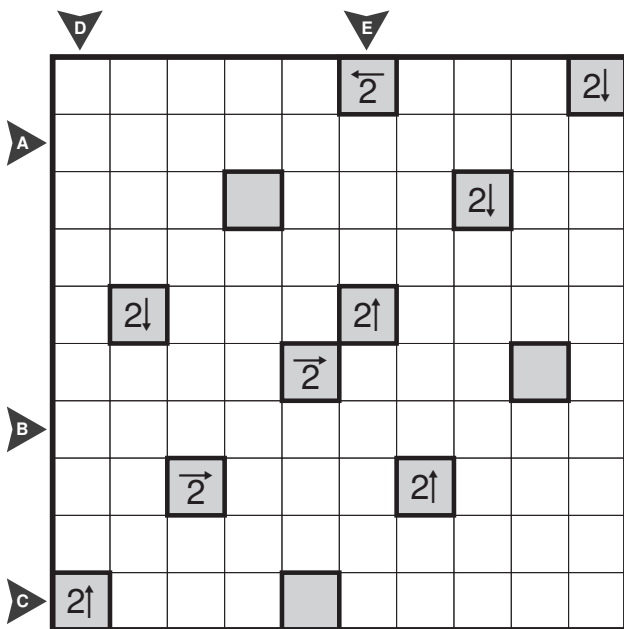
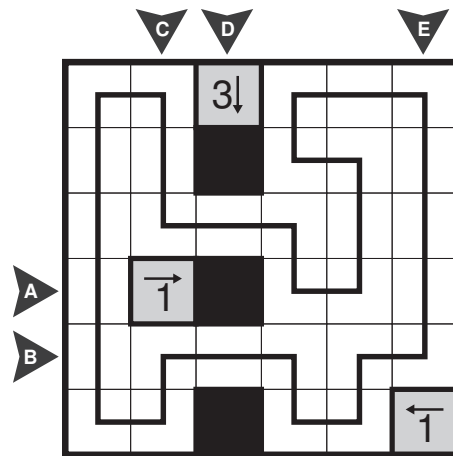
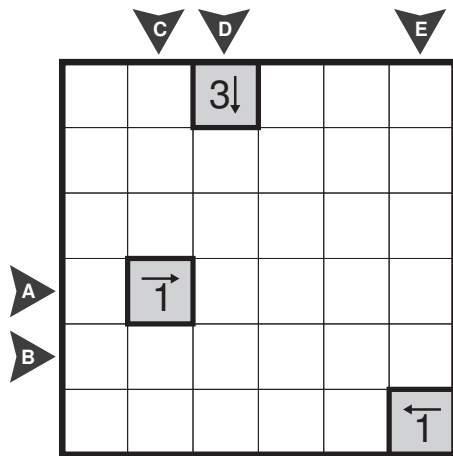
Answer key for the top grid is 4162. Answer key for the bottom grid is 3644

Yajilin

Rule

Blacken some white cells and then draw a single closed loop (without intersections or crossings) through all remaining white cells. Blackened cells cannot share an edge with each other. Some cells are outlined and in gray and cannot be part of the loop. Numbered arrows in such cells indicate the total number of blackened cells that exist in that direction in the grid.

Answer Key format: For each marked row/column, enter the length of the longest loop segment.



Answer key for the top grid is 12204. Answer key for the bottom grid is 12233

Helpful links:

Cave (also known as Corral):

Tips by Thomas Snyder –

<http://motris.livejournal.com/145824.html>

Practice Puzzle links –

<http://www.gmpuzzles.com/blog/category/cave/>

<http://prasannaseshadri.wordpress.com/category/corral/>

<http://puzzleparasite.blogspot.in/search/label/Corral>

Yajilin:

Practice Puzzle links –

<http://www.gmpuzzles.com/blog/tag/yajilin-2/>

<http://puzzleparasite.blogspot.in/search/label/Yajilin>

<http://prasannaseshadri.wordpress.com/category/yajilin/>