

Classic Sudoku 1
40 Points
 ("Their" Static Sudoku)



4				8				
						2		9
	2	3	4	5		1		
						4		
7		5		4		3		8
		6						
		1		3	5	7	9	
6		4						
				2				5



Classic Sudoku 2
35 Points
 ("Their" Static Sudoku)



	1	2	3		4	5	6	
	8	4		5		1	2	
	7		9		3		5	
		6		1		9		
	4		5		2		7	
	6	5		9		2	8	
	2	8	6		5	7	9	



Hamle Sudoku
155 Points
 (“Their” Standard Sudoku)

Each number in the top grid must be moved either up, down, left, or right the same number of cells as that number’s value without crossing the border of the grid. Numbers must all land on unique spots, but numbers may be adjacent after moving and white areas may not all be connected. Then solve the resulting Sudoku. A separate blank grid has been provided.

3		6		7				1
7		4						3
2								7
6			2	1	2			4
7			1	3	1			6
1			2	4	2			8
2								1
5						6		3
5				8		2		5

▶ **A**

▶ **B**

Consecutive Sudoku
50 Points
 ("Their" Inner Consecutive Sudoku)

If two adjacent digits are consecutive, they must have a white dot between them. If they are not consecutive, there is no dot.

								8
			2	5	8	1		
	○	○	○	○	○	○	○	○
○	○	○	○	○	○	○	○	
					○			
	○	3	1	4	2	○		
2								

Linked Consecutive Sudokus
100 Points
 ("Their" Consecutive Sudokus)

4 6x6 grids are placed as given below. The edges that are adjacent across two different grids must contain consecutive digits.

The image shows four 6x6 grids arranged in a 2x2 pattern. Each grid has a thick border and is divided into four 3x3 quadrants by a vertical line in the middle and a horizontal line in the middle. The grids are labeled A, B, C, and D with arrows pointing to their respective positions.

Grid A:

6		2	3		
2	1				
				2	

Grid B:

		4	1		3
				3	4
	2				

Grid C:

				1	
1	5				
4		3	6		

Grid D:

	1				
				4	2
		1	3		5

Quad Max Sudoku

155 Points

("Their" Max Within a Quad Sudoku)

Arrows are present at some corners. The digit in the cell pointed at by an arrow is larger than the other 3 Digits in cells touching that corner.



			6				
↙	2		↗	5		↗	↘
4			2				1
	↗		↗	↗		↗	
↖			4			↖	
	↗					↘	
7	↖		↗	↖		↘	8
			8			1	
↗		↘		↘		↗	
			7				

Maxed Quads Sudoku

70 Points

("Their" Quad Max Sudoku)

Arrows are present between two touching 2x2 areas (quads). In the quad pointed at by the arrow, all digits are greater than the digits in their corresponding positions in the other quad. Numbers can repeat in quads.



3	7			1	4	2		
6	2							
		↗				↗		
		9		7				3
								7
7		3				9		2
8								
9				6		3		
		↗				↘		
							2	6
		6	2	4			9	8

2 Even 2 Odd Sudoku
70 Points

("Their" Straight 2 Even 2 Odd Sudoku)

There can never be more than 2 consecutive digits of the same parity in a row or column.

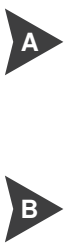


2		3			5		7	
								3
4				7				
			7		8			2
		7		2		4		
5			6		4			
				5				9
9								
	3		9			5		6

Battenburg Sudoku
55 Points

("Their" 2 Even 2 Odd Sudoku)

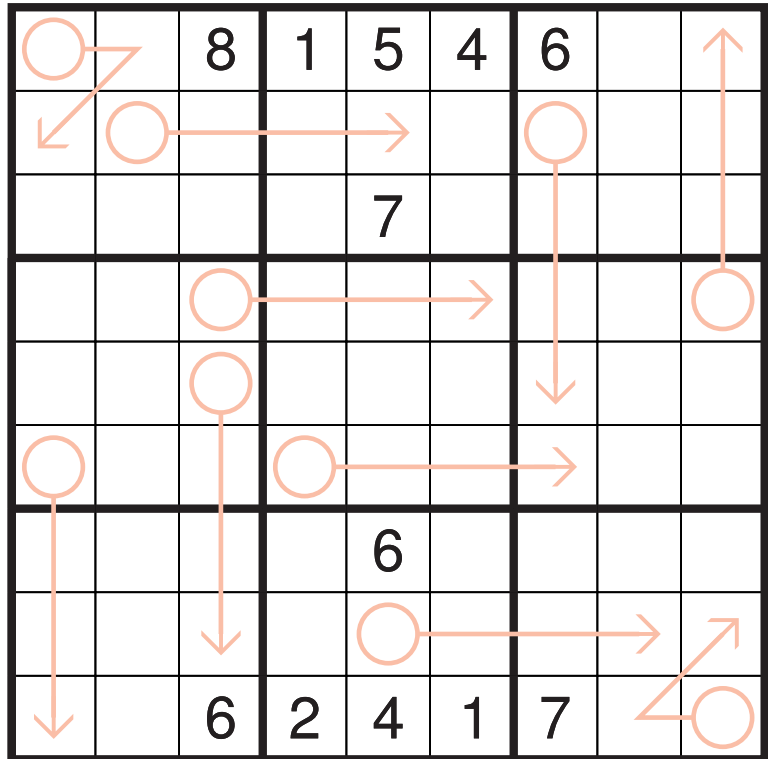
Wherever 2 odd and 2 even digits form a 2x2 checkerboard pattern, a Battenburg marking is given. If there is no marking, the above pattern is not allowed.



6	1	2	4				3	7
							2	9
1	3	9	2	4				
				3	5	9	7	4
2	6							
3	9				2	4	8	6

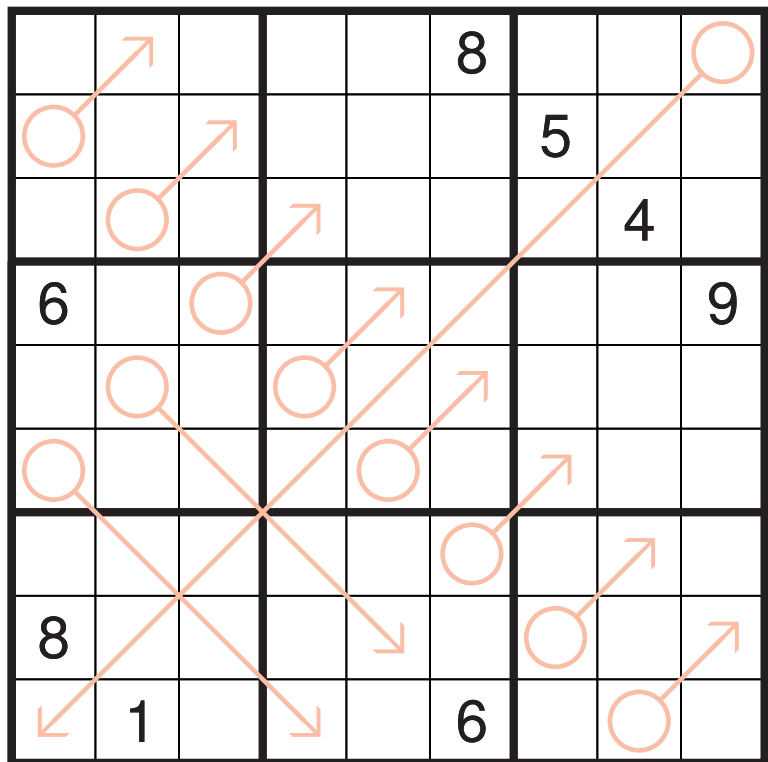
Arrow Sudoku
75 Points
 ("Their" Arrow Sums Sudoku)

The digit in the circle is the sum of the digits along the arrow extending from it. Numbers can repeat along arrows.



Arrow Sequences Sudoku
75 Points
 ("Their" Arrow Sudoku)

For a digit N in a circle, the digit N+1 is at the end of the arrow. The digits along the arrow (including the tip, but not including the circle) must form a sequence of consecutive digits. The digit in the circle can repeat along the arrow as a part of this sequence.



Trio Sudoku
50 Points
 ("Their" Trio Groups Sudoku)

There are 3 different kinds of markings in the grid, as shown below. One of the markings will contain only the digits 1-2-3 throughout the grid. Another will contain only 4-5-6. The third will contain only 7-8-9. It is part of the solve to match the marking to its group. There is no restriction for digits in blank cells.

				□			◇	7
□	7	○	3	6	8	□	5	◇
		○				□		
	8		○		2		4	□
	4			○			6	
□	3		9	○			2	
		□			○			
◇	2	□	5	8	9	○	1	
4	◇			□		○		□

Repeat Trio Sudoku
30 Points
 ("Their" Trio Sudoku)

In the grid there are some gray lines which contain 3 circles. These circles contain the same digit.

	5	7		6		2	1	
3	6		●		●		7	9
2		●		●		●		6
	●		●				●	
4		●		●		●		1
	●			●		●		
1		●		●		●		5
5	3		●		●		2	7
	7	2		9		4	3	

Palindrome Sudoku
70 Points
 ("Their" Hidden Palindrome Sudoku)

The given gray lines must contain Palindromes (i.e. a group of digits that reads the same from both ends).
 Numbers can repeat in gray lines.

		8						
			5	1	9			
		7	9		1	8		
		2				7		
		9	7		5	6		
			6	7	3			
						2		

Palindrome Search Sudoku
80 Points
 ("Their" Palindrome Sudoku)

Place the Palindromes given in the list on the right into the gray lines in the grid. Every Palindrome must be used.

		1			7			8
4			3			8		

28982
 42424
 56965
 75457
 93339
 98889

PARALLEL UNIVERSE - SOLUTIONS

Classic Sudoku 1 (Static)

4	1	7	9	8	2	5	3	6
5	6	8	7	1	3	2	4	9
9	2	3	4	5	6	1	8	7
8	3	2	5	6	9	4	7	1
7	9	5	2	4	1	3	6	8
1	4	6	3	7	8	9	5	2
2	8	1	6	3	5	7	9	4
6	5	4	1	9	7	8	2	3
3	7	9	8	2	4	6	1	5

Classic Sudoku 2 (Static)

9	1	2	3	8	4	5	6	7
6	5	7	1	2	9	4	3	8
3	8	4	7	5	6	1	2	9
2	7	1	9	4	3	8	5	6
5	3	6	8	1	7	9	4	2
8	4	9	5	6	2	3	7	1
7	6	5	4	9	1	2	8	3
4	9	3	2	7	8	6	1	5
1	2	8	6	3	5	7	9	4

Hamle Sudoku (Standard)

2	9	3	5	8	4	7	1	6
1	6	8	7	3	2	4	5	9
5	7	4	6	1	9	2	3	8
3	2	9	1	4	7	6	8	5
4	5	6	9	2	8	1	7	3
8	1	7	3	5	6	9	2	4
9	3	2	8	6	1	5	4	7
6	4	5	2	7	3	8	9	1
7	8	1	4	9	5	3	6	2

Consecutive Sudoku (Inner Consecutive)

7	1	4	6	9	3	5	2	8
3	6	9	2	5	8	1	7	4
5	8	2	4	7	1	3	9	6
1	4	7	9	3	6	8	5	2
9	3	6	8	2	5	7	4	1
8	2	5	7	1	4	6	3	9
4	9	1	5	8	7	2	6	3
6	7	3	1	4	2	9	8	5
2	5	8	3	6	9	4	1	7

Linked Consecutive Sudokus (Consecutive)

6	4	2	3	5	1	2	6	4	1	5	3
1	5	3	4	6	2	1	3	5	4	2	6
2	1	4	5	3	6	5	1	2	6	3	4
3	6	5	2	1	4	3	4	6	2	1	5
4	3	1	6	2	5	6	2	3	5	4	1
5	2	6	1	4	3	4	5	1	3	6	2
6	1	5	2	3	4	3	6	2	4	5	1
2	4	6	5	1	3	4	1	3	5	2	6
5	3	1	4	2	6	5	2	6	1	3	4
1	5	4	3	6	2	1	3	5	6	4	2
3	6	2	1	4	5	6	5	4	2	1	3
4	2	3	6	5	1	2	4	1	3	6	5

PARALLEL UNIVERSE - SOLUTIONS

Quad Max Sudoku (Max within a Quad)

3	1	7	9	6	4	8	5	2
8	2	6	7	5	1	3	4	9
4	5	9	2	3	8	6	7	1
9	3	8	1	2	7	4	6	5
1	7	5	8	4	6	9	2	3
2	6	4	3	9	5	1	8	7
7	4	3	6	1	2	5	9	8
5	9	2	4	8	3	7	1	6
6	8	1	5	7	9	2	3	4

Maxed Quads Sudoku (Quad Max)

3	7	8	9	1	4	2	6	5
6	2	4	5	3	8	1	7	9
5	1	9	6	7	2	4	8	3
2	4	1	3	9	6	8	5	7
7	6	3	8	5	1	9	4	2
8	9	5	4	2	7	6	3	1
9	8	2	7	6	5	3	1	4
4	3	7	1	8	9	5	2	6
1	5	6	2	4	3	7	9	8

2 Even 2 Odd Sudoku (Straight 2 Even 2 Odd)

2	1	3	8	9	5	6	7	4
7	5	8	1	4	6	9	2	3
4	6	9	2	7	3	8	1	5
6	9	4	7	1	8	3	5	2
3	8	7	5	2	9	4	6	1
5	2	1	6	3	4	7	9	8
8	7	6	4	5	1	2	3	9
9	4	5	3	6	2	1	8	7
1	3	2	9	8	7	5	4	6

Battenburg Sudoku (2 Even 2 Odd)

6	1	2	4	5	9	8	3	7
7	5	4	8	1	3	6	2	9
9	8	3	7	2	6	1	4	5
1	3	9	2	4	7	5	6	8
5	4	7	9	6	8	3	1	2
8	2	6	1	3	5	9	7	4
4	7	8	6	9	1	2	5	3
2	6	5	3	8	4	7	9	1
3	9	1	5	7	2	4	8	6

Arrow Sudoku (Arrow Sums)

9	2	8	1	5	4	6	7	3
7	6	1	3	2	8	9	5	4
4	3	5	6	7	9	2	8	1
6	5	7	4	1	2	3	9	8
3	1	9	7	8	6	4	2	5
8	4	2	9	3	5	1	6	7
1	9	3	5	6	7	8	4	2
2	7	4	8	9	3	5	1	6
5	8	6	2	4	1	7	3	9

Arrow Sequences Sudoku (Arrow)

5	2	3	9	4	8	6	7	1
1	4	8	6	7	3	5	9	2
9	7	6	2	1	5	8	4	3
6	5	1	3	2	7	4	8	9
4	8	2	1	6	9	3	5	7
3	9	7	5	8	4	2	1	6
7	6	4	8	3	1	9	2	5
8	3	5	7	9	2	1	6	4
2	1	9	4	5	6	7	3	8

PARALLEL UNIVERSE - SOLUTIONS

Trio Sudoku (Trio Groups)

3	1	9	4	2	5	6	8	7
2	7	4	3	6	8	1	5	9
8	6	5	7	9	1	2	3	4
5	8	7	6	1	2	9	4	3
9	4	2	8	5	3	7	6	1
1	3	6	9	4	7	8	2	5
6	5	1	2	7	4	3	9	8
7	2	3	5	8	9	4	1	6
4	9	8	1	3	6	5	7	2

Repeat Trio Sudoku (Trio)

8	5	7	9	6	4	2	1	3
3	6	4	1	2	8	5	7	9
2	9	1	7	3	5	8	4	6
7	1	6	3	5	2	9	8	4
4	2	3	6	8	9	7	5	1
9	8	5	4	1	7	3	6	2
1	4	8	2	7	3	6	9	5
5	3	9	8	4	6	1	2	7
6	7	2	5	9	1	4	3	8

Palindrome Sudoku (Hidden Palindrome)

6	5	8	3	4	7	1	2	9
1	9	3	2	8	6	5	7	4
2	7	4	5	1	9	3	8	6
5	6	7	9	3	1	8	4	2
3	1	2	4	6	8	7	9	5
8	4	9	7	2	5	6	3	1
4	2	5	6	7	3	9	1	8
9	3	1	8	5	2	4	6	7
7	8	6	1	9	4	2	5	3

Palindrome Search Sudoku (Palindrome)

9	3	1	5	2	7	4	6	8
7	5	4	9	6	8	2	3	1
6	8	2	4	3	1	9	5	7
1	9	7	2	4	3	6	8	5
5	4	8	1	9	6	3	7	2
2	6	3	8	7	5	1	9	4
3	1	9	7	8	4	5	2	6
8	2	5	6	1	9	7	4	3
4	7	6	3	5	2	8	1	9