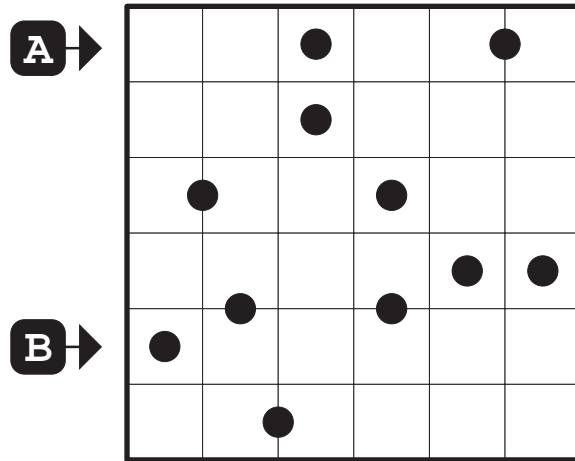


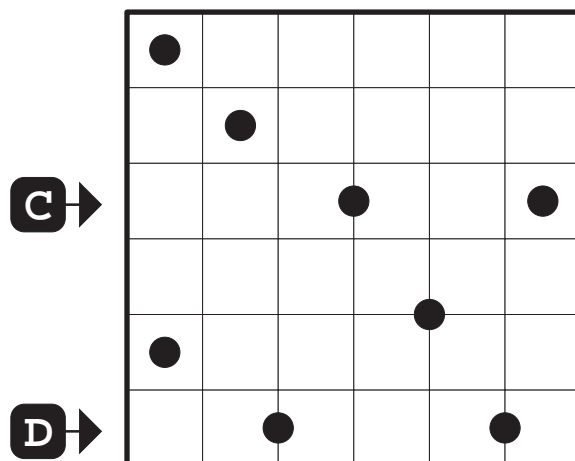
Spiral Galaxies

Rule: Divide the grid into 180° symmetrical regions, so that each cell is part of only one region. Circles represent the central symmetry point of their regions.

Answer Format: For each marked row, write the number of cells that belong to different shapes.



1 Introduction
3 points

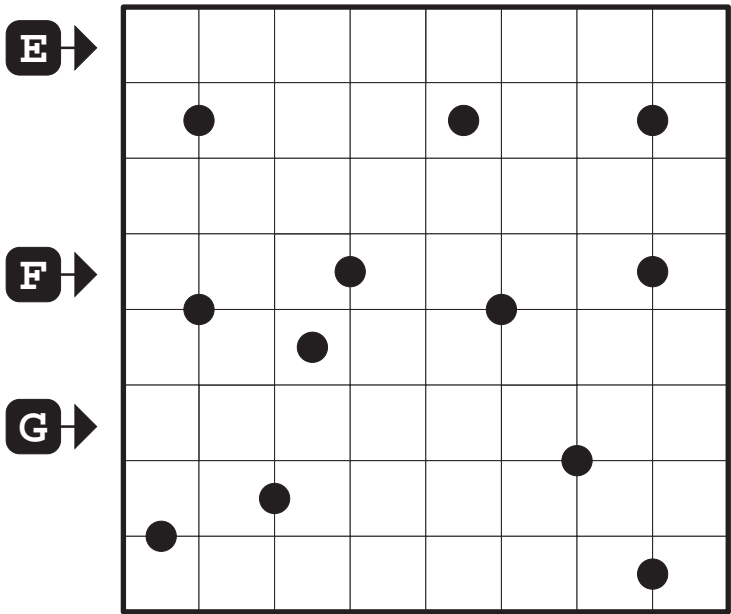


2 Introduction
4 points

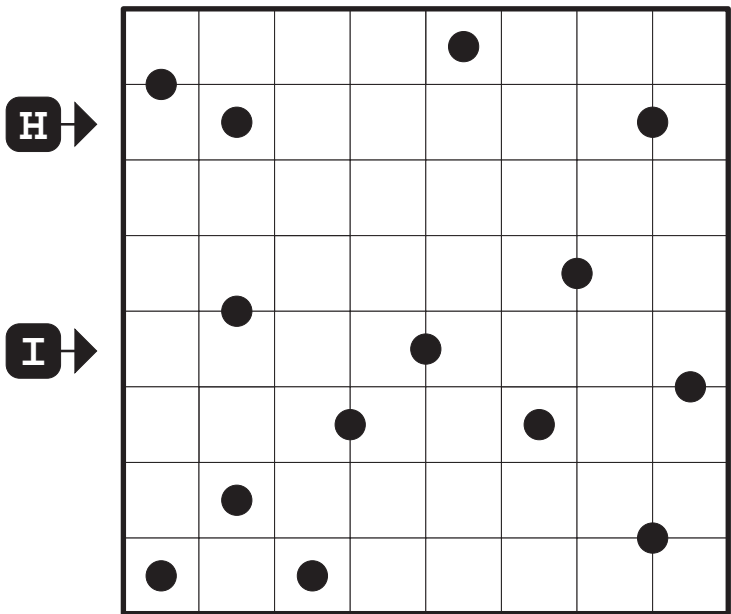
Spiral Galaxies

Rule: Divide the grid into 180° symmetrical regions, so that each cell is part of only one region. Circles represent the central symmetry point of their regions.

Answer Format: For each marked row, write the number of cells that belong to different shapes.



3 Intermediate
5 points

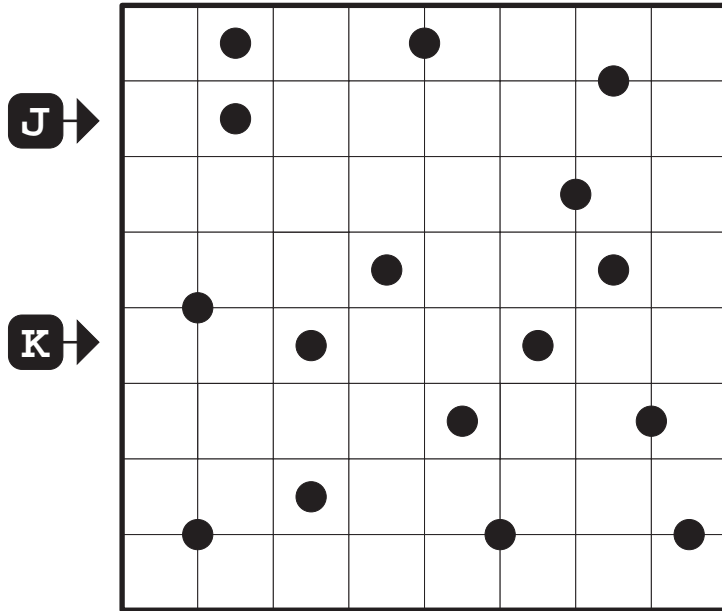


4 Intermediate
6 points

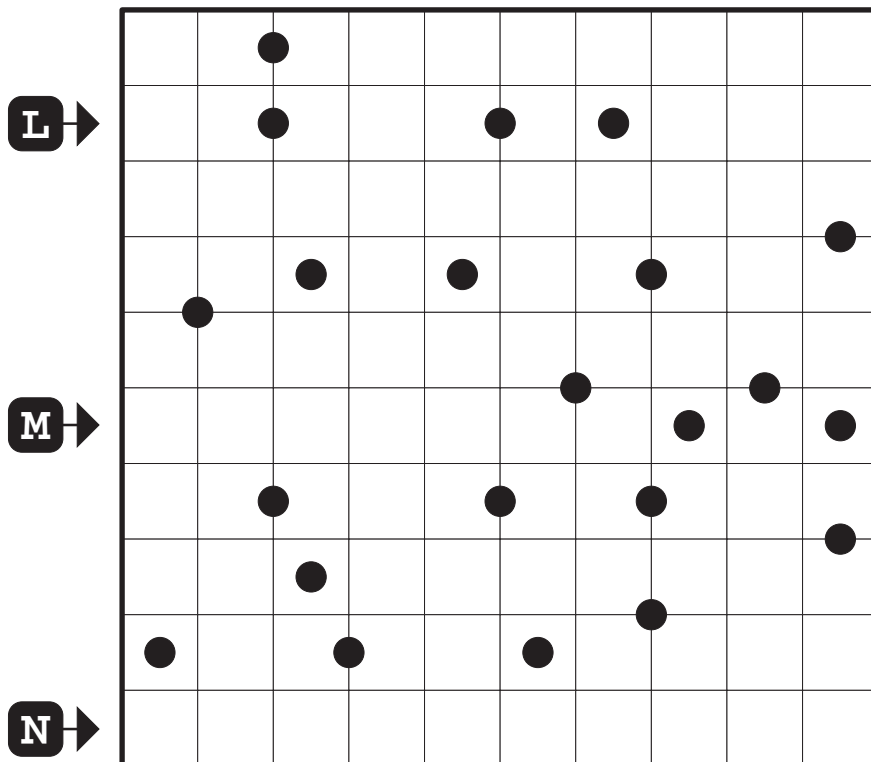
Spiral Galaxies

Rule: Divide the grid into 180° symmetrical regions, so that each cell is part of only one region. Circles represent the central symmetry point of their regions.

Answer Format: For each marked row, write the number of cells that belong to different shapes.



5 Challenging
7 points

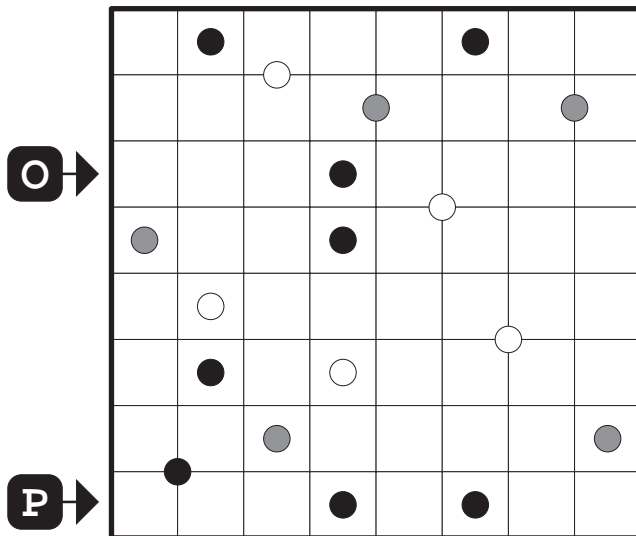
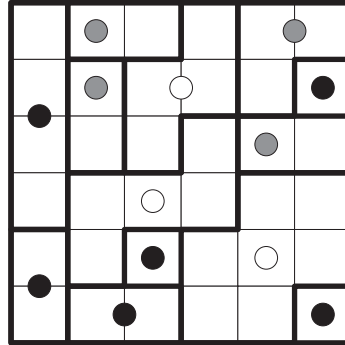
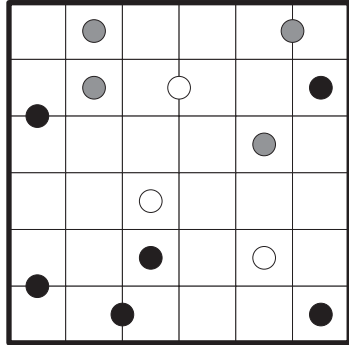


6 Challenging
8 points

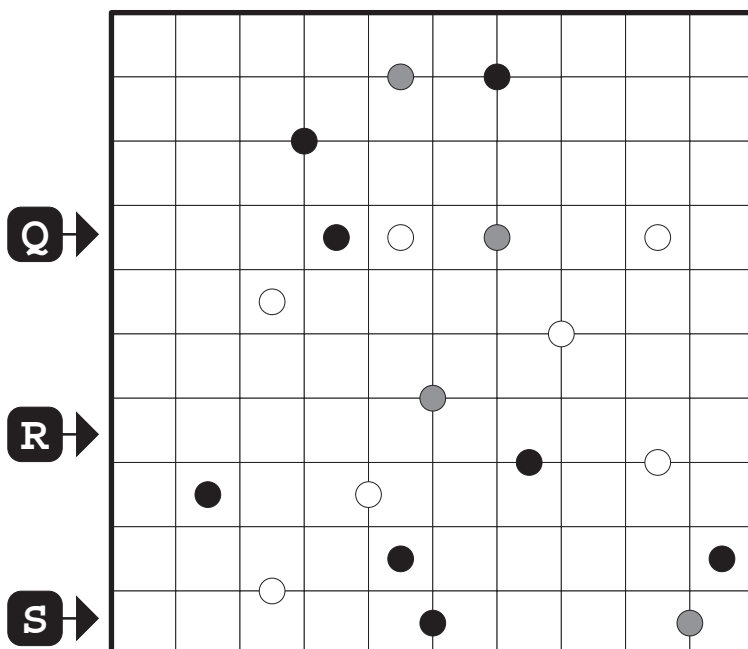
Spiral Galaxies

Rule: Solved example for Exploratory Spiral Galaxies puzzle.

Answer Format: For each marked row, write the number of cells that belong to different shapes.



7 Exploratory
7 points



8 Exploratory
10 points