

LMI Beginners' Puzzle Contest

14th to 19th March 2014

Quick Summary

- There will be 2 rounds, each round consisting of 8 puzzles of one type.
- Time bonus (2 points per minute saved) will be awarded, if a round is completed before 40 minutes
- Category bonus will be awarded if both puzzles in a category solved within 40 minutes
- Puzzles submitted after 40 minutes will be worth half of its original points
- "Instant Grading" will be enabled, that means
 - * Upon submitting a puzzle, you will immediately know if it is correct or not
 - * Every wrong submission will be penalized by adding 1 minute to your submission time

Category	#	Spiral Galaxies		Tetrominoes	
		Points	Category Bonus	Points	Category Bonus
Introductory	1	3	5	2	4
Introductory	2	4		3	
Intermediate	3	5	7	5	6
Intermediate	4	6		6	
Challenging	5	7	8	8	8
Challenging	6	8		9	
Exploratory	7	7	10	7	12
Exploratory	8	10		10	
		50	30	50	30

Note about Exploratory Puzzles

The rules will be slightly different from the base puzzles. We will provide a sample puzzle and its solution. Players need to deduce the rules from the solved example.

Submission page: <http://logicmastersindia.com/BeginnersPuzzle/201403/>

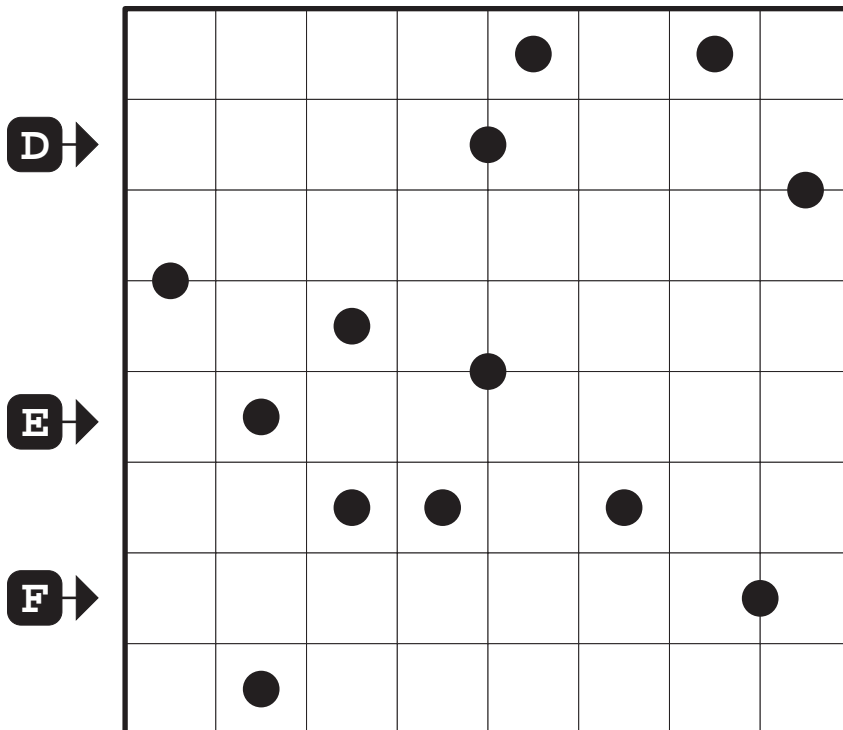
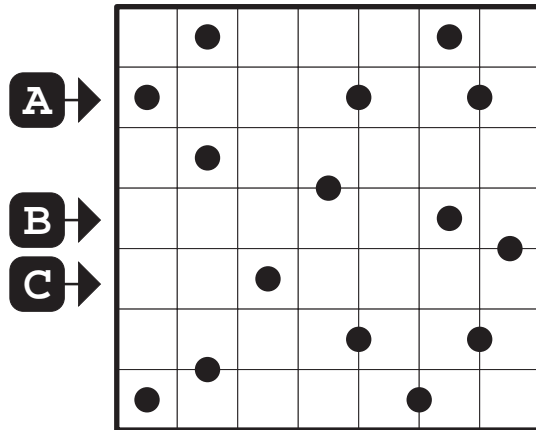
Forum Discussion: <http://logicmastersindia.com/forum/forums/thread-view.asp?pid=14579>

Details available at : <http://logicmastersindia.com/forum/forums/thread-view.asp?pid=13241>

Spiral Galaxies

Rule: Divide the grid into 180° symmetrical regions, so that each cell is part of only one region. Circles represent the central symmetry point of their regions.

Answer Format: For each marked row, write the number of cells that belong to different shapes.



Polish Puzzle Championship 2013

Tetrominoes

Rule: Divide the grid into tetrominoes, avoiding black cells, so that two identical tetrominoes cannot share an edge (may touch diagonally). Tetrominoes that are rotations/ reflections of each other are considered identical. Each tetromino is represented with a letter. Cells with letters should belong to the corresponding tetrominoes. Each tetromino may contain at most one letter.

Answer Format: For each marked row, write the number of cells that belong to different tetrominoes, ignore the black cells.

A →		O	Z				
			■				
B →	■					T	
				O	■		
C →	■	T					
		■			T	Z	

		I	
--	--	---	--

O	

L	

	T	

	Z	
--	---	--

--	--	--

	Z			I				T	
				■				■	
D →	■		L			T			
E →		O			■			L	
				L			L		
				■					
F →		T				O			Z

Recommended links for puzzles

Spiral Galaxies

1. 2004 Google U.S Puzzle Championship

<http://wpc.puzzles.com/history/tests/g4/summary.htm>

2. Puzzle Picnic

<http://puzzlepicnic.com/genre?galaxies>

Tetrominoes

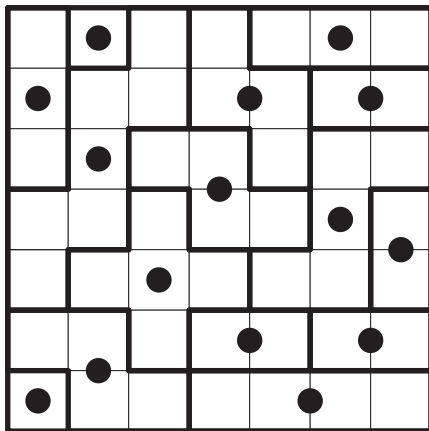
1. WPF Puzzle GP - Round 2

<http://www.gp.worldpuzzle.org/node/82>

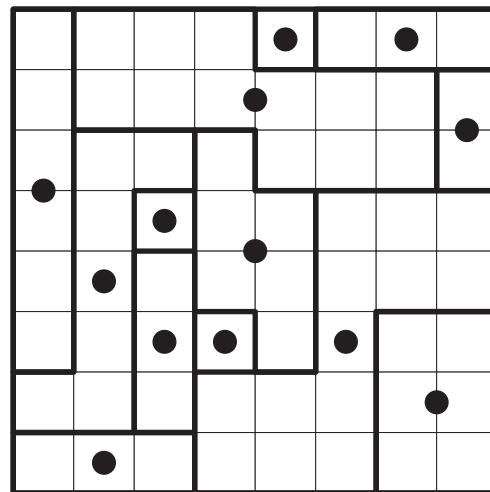
2. Slovak Sudoku

<http://www.slovaksudoku.com/en/blog/2014/2/litso.html>

SOLUTIONS



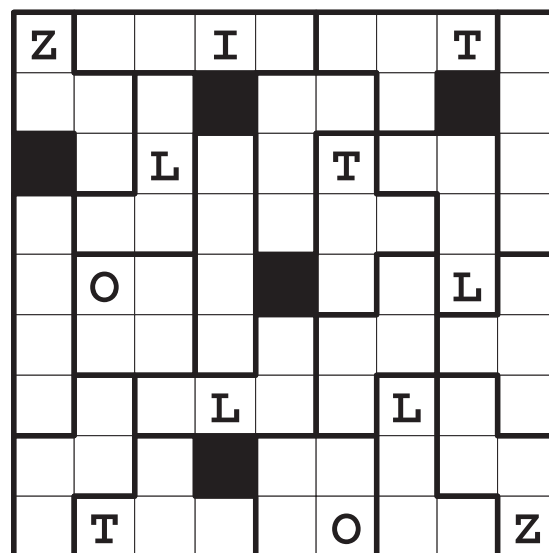
1222, 21211, 1321



161, 11123, 2132



223, 123, 141



1111121, 1211111, 21212