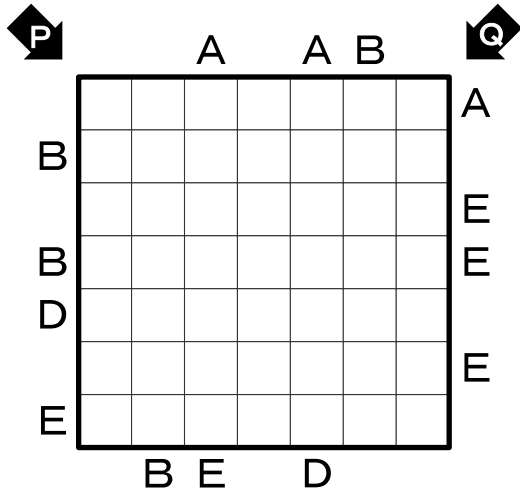


# Easy as ABC

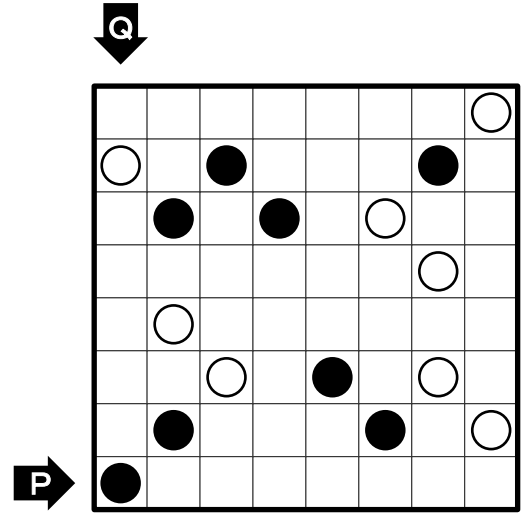
(A~E)



P

Q

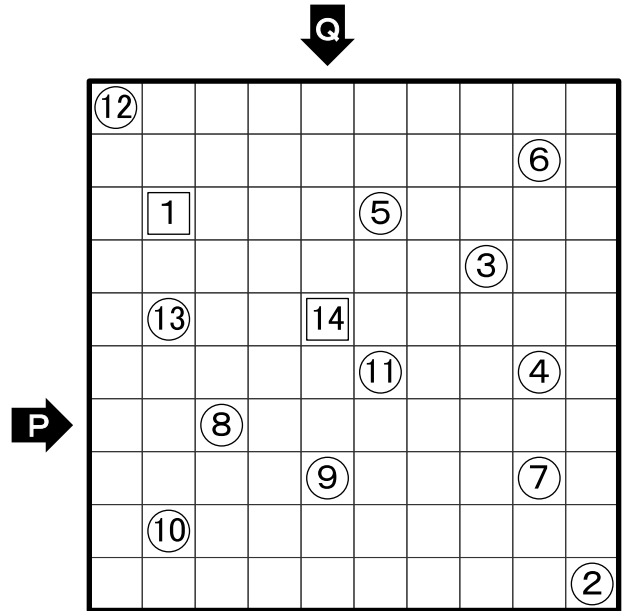
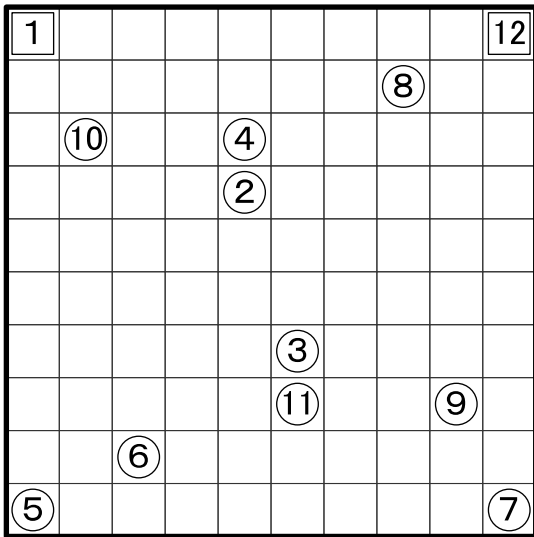
# Yin-Yang



P

Q

# Number Connection



P

Q

# Zero Zero Cross

1	1	1	6	← 6 _ _
6	3	3	3	← _ _ 9
1	5	2	4	← _ 5 _
6	7	6	1	← 7 6 7

↑  
 \_ \_ 1    \_ 2 \_

↑  
 \_ \_ 6    \_ 4 \_

P |   |   |   |

Q |   |   |   |

# Divided Sum Cross

➔

P |   |   |   |

Q |   |   |   |

# Dynamites

		<b>R</b>	<b>S</b>		
	1	0			1
			2		
				0	
<b>P</b>	1		3		
			4		2
<b>Q</b>		3			
			2		
	2			3	0

P

Q

R

S

# Four Winds with Blanks

	2						8
		7				8	
			4				
					3		
						8	
	5						
			6				
					4		
						2	
<b>P</b>	13		2				4

P

Q

# Bar Graph

0 ~ 10, 5 cells per region

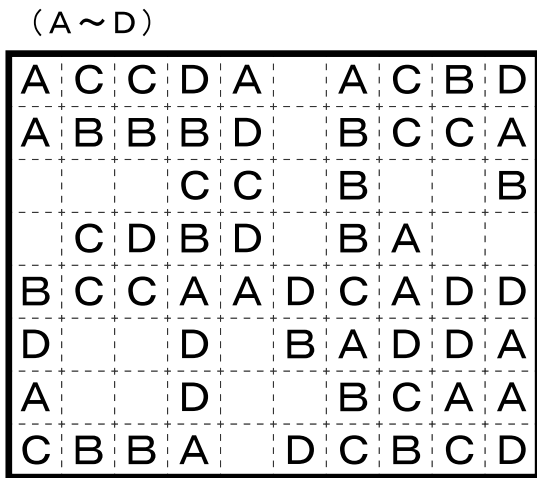

P

# Arrow Connection

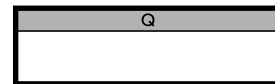
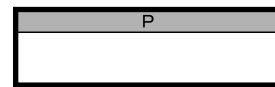
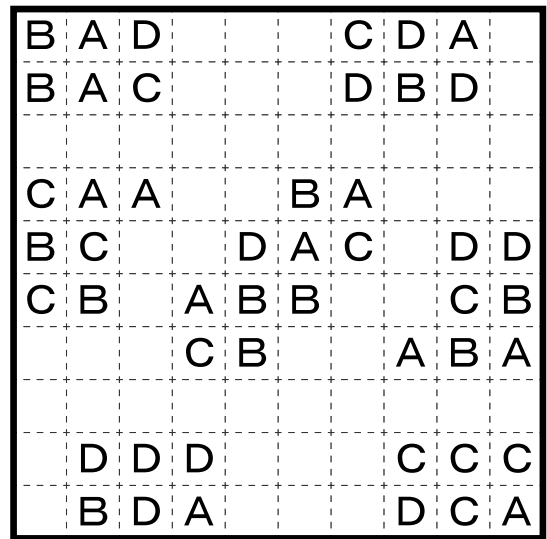

P

Q

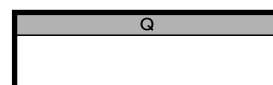
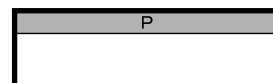
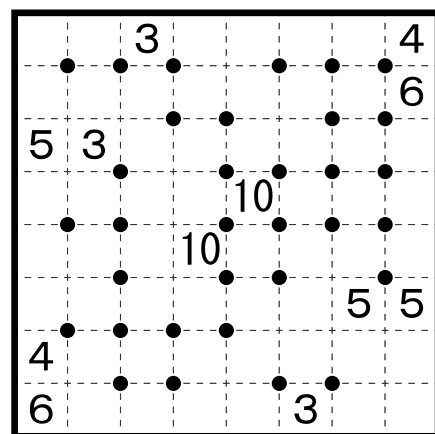
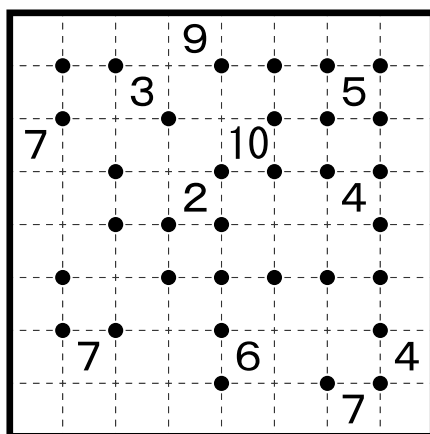
# Minimal Blocks



(A~D)



# Corner Dots



# Easy as ABC

(A~E)

	A	A	B		
E	C	D	B	A	A
B	B	E	A	C	D
C	D	A	B	E	E
B		B	A	C	D
D	A	C	E		B
A	B	D	C	E	
E		E	B	D	A
	B	E	D		

P: E E A A - - C  
Q: A C B A C B -

# Yin-Yang

○	○	○	○	○	○
●	●	○	○	○	○
○	○	○	○	○	○
○	○	○	○	○	○
○	○	○	○	○	○
○	○	○	○	○	○
○	○	○	○	○	○
○	○	○	○	○	○
○	○	○	○	○	○
○	○	○	○	○	○

P: 5 3  
Q: 7 1

# Zero Zero Cross

1	10	1	600	← 6 1 2
600	3	3	3	← 6 0 9
10	500	2	40	← 5 5 2
60	7	600	100	← 7 6 7

↑ 6 7 1    ↑ 5 2 0    ↑ 6 0 6    ↑ 7 4 3

P: 0 0 0 2    Q: 2 0 2 1

# Number Connection

P: 3 2  
Q: 2 1

# Divided Sum Cross

10	12	14	10	16
4	2	3	5	1
15	6	4	5	1
4	3	1	2	4
6	1	5	4	2
5	5	3	8	6
9	3	8	8	7

P: 4 9 6 1 3  
Q: 2 3 1 9 5

# Dynamites

1	0		1
		2	
1		3	0
		4	2
3		2	
2		3	0

P: 1    Q: 4    R: 3    S: 3

# Four Winds with Blanks

2	7	8	8
	4	3	8
5	6	4	8
2	4	2	4
13	2	2	4

P: 3 - 2 2 2 2 2 8 4  
Q: 8 8 4 4 4 - 6 4 2 3

# Minimal Blocks

A	C	D	A	A	C	B	D	
A	B	B	B	D	B	C	C	A
		C	C		B		B	
	C	D	B	D	B	A		
B	C	C	A	A	D	C	A	D
A		D		B	A	D	A	A
C	B	B	A	D	C	B	C	D

(A~D)

B	A	D		C	D	A				
B	A	C		D	B	D				
C	A	A		B	A					
B	C			D	A	C	D	D		
C	B			A	B	B		C	B	
				C	B			A	B	A
D	D	D						C	C	C
B	D	A						D	C	A

P: 9 1  
Q: 1 1 2 5 1

# Bar Graph

0 ~ 10, 5cells per region

3	0	4	9	2	8	1	5	6	7	10
3	0	4	9	2	8	1	5	6	7	0

# Arrow Connection

P: 3 1  
Q: 4

# Corner Dots

	9		5
7	3	10	4
	2		4
		6	7
7			4

	3		4
5	3	10	6
		10	5
4			5
6			3

P: 1 1 2 2 1 1  
Q: 4 3 1