



- An LMI Beginners' Puzzle contest

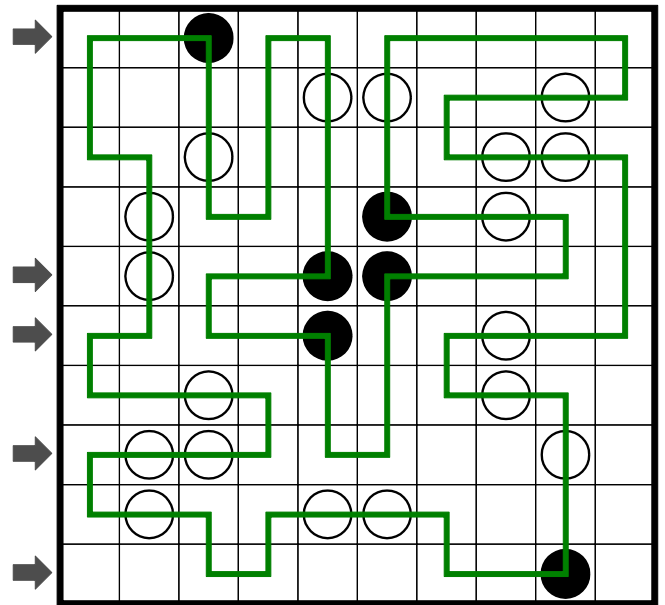
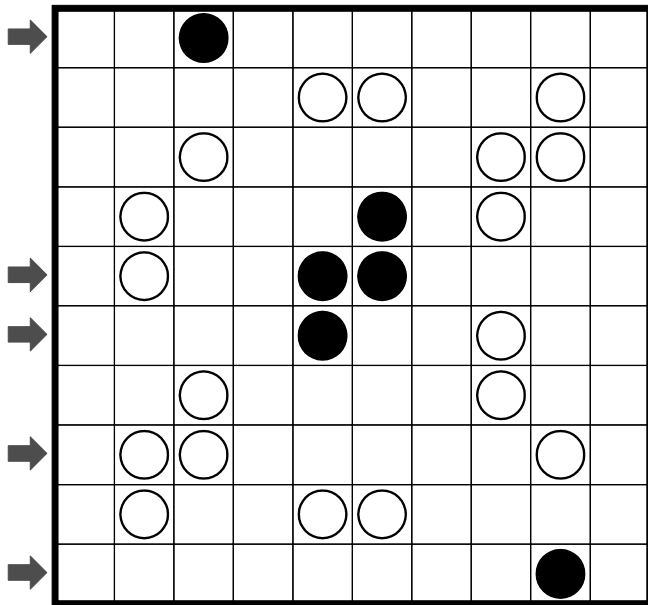
I would like to thank Logic Masters of India (LMI) for providing me the opportunity to author this contest.

Author: Ravi Kumar Macherla
Tester: Branko Ceranic

Masyu - Rules

Draw a single, non-intersecting loop that passes through all circled cells. The loop must go straight through the cells with white circles, with a turn in at least one of the cells immediately before/after each white circle. The loop must make a turn in all the black circles, but must go straight in both cells immediately before/after each black circle.

Answer key: For each marked row, enter the number of unused cells of the grid, starting from top.



Answer key for the example: 01035

POINTS TABLE

The contest contains a total of 17 Masyu puzzles, sixteen 10 X 10 grids and one 20 X 20 grid.

The puzzles are sorted in the increasing order of difficulty from left to right and top to bottom. However depending on the player solving experience the difficulty may vary.

The players are allowed to solve the puzzles in any order they wish.

NOTE: Instant grading is available for this contest.

Number of correct puzzles	Bonus Points	Cumulative Points
1		10 Points
2	10 Points	20 Points
3	10 Points	30 Points
4	10 Points	40 Points
5	15 Points	55 Points
6	15 Points	70 Points
7	15 Points	85 Points
8	15 Points	100 Points
9	20 Points	120 Points
10	20 Points	140 Points
11	20 Points	160 Points
12	20 Points	180 Points
13	30 Points	210 Points
14	30 Points	240 Points
15	30 Points	270 Points
16	30 Points	300 Points
17	50 Points	350 Points
Grand Total		350 Points

SCORING SYSTEM

Duration: 70 Minutes + Extended time, which means player can submit after 70 minutes.

Penalty: 1 minute increment in the total time for every incorrect submission.

Puzzle Bonus: For puzzles submitted correctly within 70 minutes there will be full bonus awarded depending on the number of puzzles submitted, thereafter all correct submissions will be awarded 50% of the bonus points.

Time Bonus: Players submitting **all** 17 puzzles within 70 minutes will be awarded 5 points per every minute saved.

Example: If a player submits 14 puzzles correctly within 70 minutes then 240 points will be awarded, thereafter if the player submits 15th, 16th and 17th puzzle correctly then the player gets 15, 15 and 25 bonus points respectively, so the total score will be $240 + 15 + 15 + 25 = 295$

