

## HIDDEN WORDS

Place all given words (**top ten from this year's WPC**) in the grid such that words cannot touch each other, not even diagonally. The letters outside the grid means that they must appear in that row or column at least once.



	H	J	T	E	H	H	I	
M								
J								
N								
M								
M								
R								
T								
R								

ULRICH  
THOMAS  
PALMER  
ZOLTAN  
KO  
HIDEAKI  
BRAM  
NIKOLA  
PAL  
JANA

20 points

*Answer key: Enter the letters of the 7<sup>th</sup> row and 3<sup>rd</sup> column. Ignore the empty cells.*

## ABC DECODER

Each letter covers different integer values **between 1 and 19**. Find the concrete values of the letters on the strength of their given sums. One value is already given (C=3).

ULRICH = 43  
THOMAS = 60  
PALMER = 47  
ZOLTAN = 47  
KO = 30  
HIDEAKI = 56  
BRAM = 39  
NIKOLA = 43  
PAL = 26  
JANA = 35

14 points

A	B	C	D	E	H	I	J	K	L	M	N	O	P	R	S	T	U	Z
		3																

*Answer key: Enter the total value of word BEST.*

## WORD NURIKABE

Place the given words in the grid, so that the words are readable in horizontally and vertically connected cells. Different words can't touch each other horizontally and vertically. The remaining cells must form a single connected shape and can't have any 2x2 areas anywhere. Each word has one letter given in the grid.

		L				H		
	M						L	
→								
	I					O		
				K				
→		E						
						A		
							N	

ULRICH  
 THOMAS  
 PALMER  
 ZOLTAN  
 KO  
 HIDEAKI  
 BRAM  
 NIKOLA  
 PAL  
 JANA

24 points

*Answer key: Enter the letters of the 3<sup>rd</sup> and 8<sup>th</sup> row. Ignore the remaining cells.*

## SNAIL'S NEST

Write each of the names in the word list into its own snail, entering the letters in order starting from the outside of the snail and spirally inward. Not all squares will be used, and "-" indicates those squares that must remain blank. A letter can not appear more than once in any row or column of the full grid.

		-						
→						K		
	-		→					
→			-	-				
→								-
			↓					U
		-				-		
		N		-				

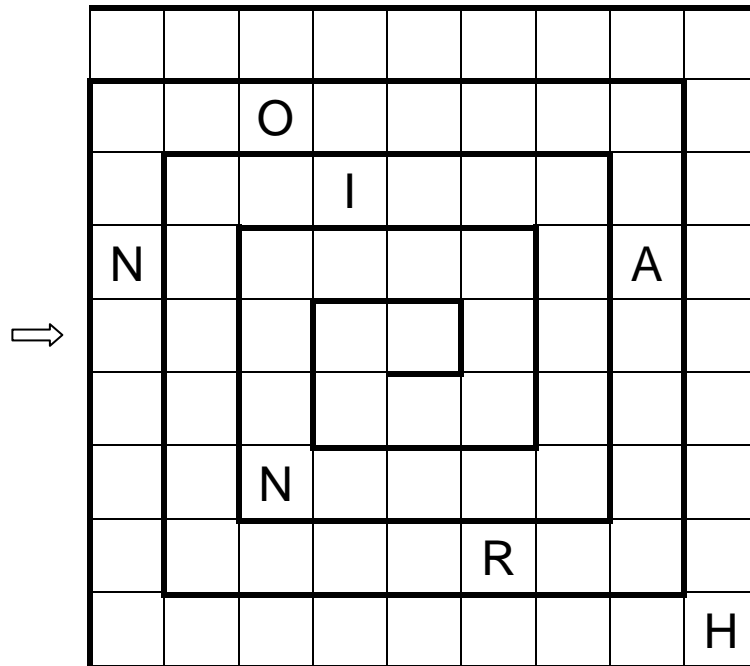
ULRICH  
 THOMAS  
 PALMER  
 ZOLTAN  
 KO  
 HIDEAKI  
 BRAM  
 NIKOLA  
 PAL  
 JANA

21 points

*Answer key: Enter the letters of the 2<sup>nd</sup> and 5<sup>th</sup> row. Ignore the empty cells.*

## WORD LABYRINTH

Write all the given words into the grid, following the spiral. Words must be separated by at least one empty cell. Letters cannot appear more than once in any row or column.



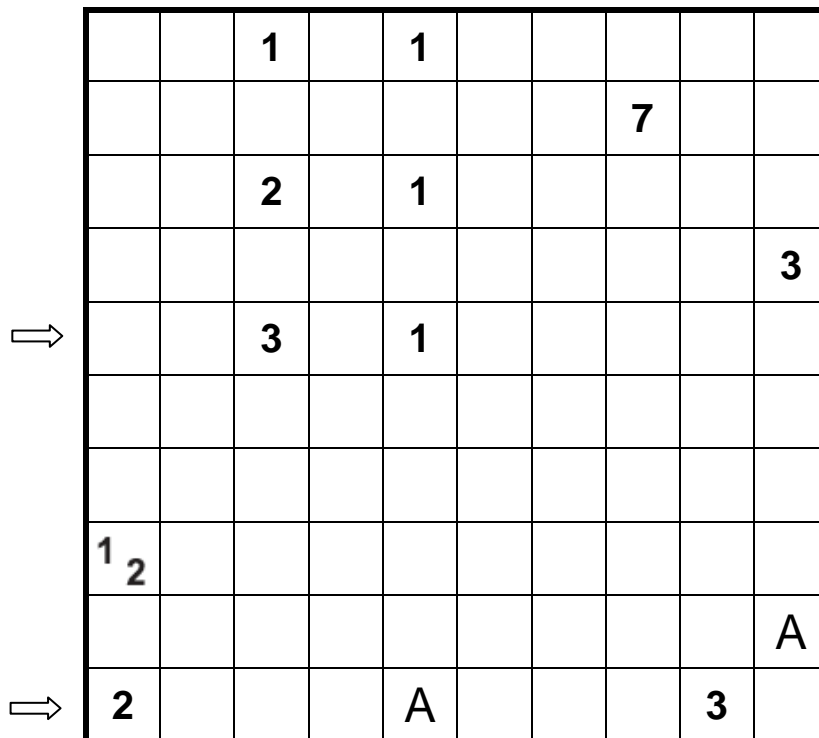
ULRICH  
THOMAS  
PALMER  
ZOLTAN  
KO  
HIDEAKI  
BRAM  
NIKOLA  
PAL  
JANA

17 points

*Answer key: Enter the letters of the 5<sup>th</sup> row. Ignore the empty cells.*

## FULL TAPA

Paint some cells black to create a continuous wall. Number/s in a cell indicate the length of black cell blocks on its neighboring cells. If there is more than one number in a cell, there must be at least one white cell between the black cell blocks. Painted cells cannot form a 2x2 square or larger. There are no wall segments on cells containing numbers. Enter the given words once each into the entirety of the empty cells. Words must be written either across or down, and all words formed by consecutive letters in the grid must appear in the word list. Some letters are already given.



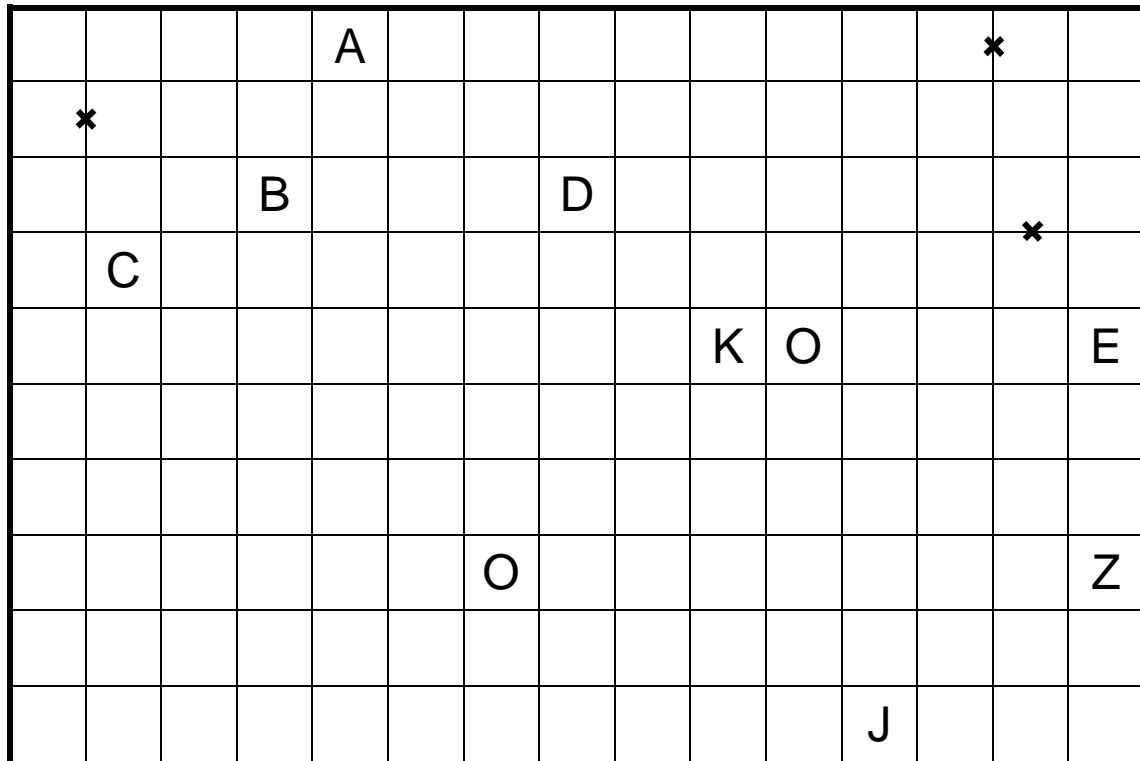
ULRICH  
THOMAS  
PALMER  
ZOLTAN  
KO  
HIDEAKI  
BRAM  
NIKOLA  
PAL  
JANA

15 points

*Answer key: Enter the letters of the 5<sup>th</sup> and 10<sup>th</sup> row. Ignore the painted cells.*

## WORD CONNECTION

Place the words into the grid (one letter per square) so that they do not touch each other, not even diagonally, and so that they read in a straight line either forwards or backwards, horizontally or vertically. Then find a path that uses every square in the grid and passes through each word in order, starting with the first letter of the first word, traveling straight through the full length of each word (from the beginning of the word to the end), and ending with the last letter of the last word. Sign "X" between two cells means that path cannot pass there.



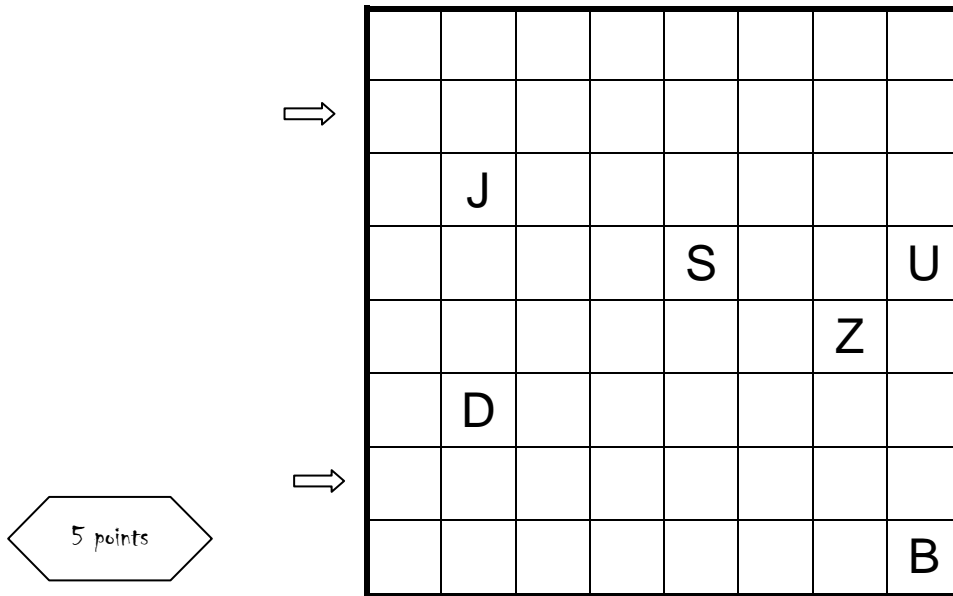
23 points

1. ULRICH
2. THOMAS
3. PALMER
4. ZOLTAN
5. KO
6. HIDEAKI
7. BRAM
8. NIKOLA
9. PAL
10. JANA

*Answer key: Enter the number of turns the path makes after the end of one word and before the beginning of the next, in order starting with the end of the first word.*

## WORD STAIRS

Place all given words in the diagram so that no letter is repeated within a row/column. All words should be placed like stairs (e. g. up-left-up-left). Words can cross or overlap each other. Some letters are already given.



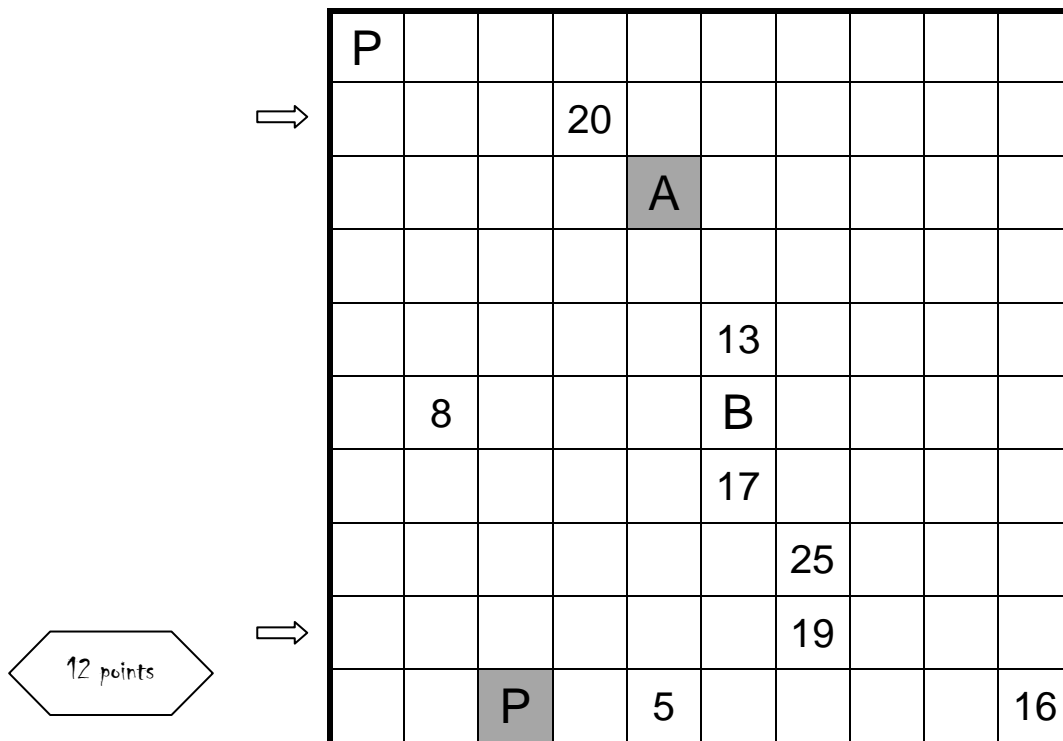
ULRICH  
THOMAS  
PALMER  
ZOLTAN  
HIDEAKI  
BRAM  
NIKOLA  
JANA

Small note: word KO is already in NIKOLA and word PAL is already in PALMER

Answer key: Enter the letters of the 2<sup>nd</sup> and 7<sup>th</sup> row. Ignore the empty cells.

## SIGMA SNAKE

Draw a snake of letters in the grid, whose head and tail are given in grey cells and that doesn't touch itself, not even diagonally. Avoid cells with numbers. The snake must be formed only of numbered words (as written in the given word list) in any order. A number gives the total of the adjacent (even at a point) numbers that are in the snake. Some other letters are given. You don't need to use all the words but you may use each word only once.



1 - ULRICH  
2 - THOMAS  
3 - PALMER  
4 - ZOLTAN  
5 - KO  
6 - HIDEAKI  
7 - BRAM  
8 - NIKOLA  
9 - PAL  
10 - JANA

Answer key: Enter the letters of the 2<sup>nd</sup> and 9<sup>th</sup> row. Ignore the other cells.

## SCRABBLE

Place all the listed words in the grid. Each word crosses with at least one other word and all words are interconnected. Words that are not on the list cannot appear anywhere in the grid (not even two-letter words). All interconnections are marked.

⇒																			
⇒																			

- ULRICH
- THOMAS
- PALMER
- ZOLTAN
- KO
- HIDEAKI
- BRAM
- NIKOLA
- PAL
- JANA

14 points

*Answer key: Enter the letters of the 4<sup>th</sup> and 8<sup>th</sup> row. Ignore the empty cells.*

## A SCRABBLE

Place all the listed words in the grid. Each word crosses with at least one other word and all words are interconnected. Words that are not on the list cannot appear anywhere in the grid (not even two-letter words). All letters A are given.

⇒																			
					A					A									
		A		A											A				
							A												
																		A	
⇒																			

- ULRICH
- THOMAS
- PALMER
- ZOLTAN
- KO
- HIDEAKI
- BRAM
- NIKOLA
- PAL
- JANA

3 points

*Answer key: Enter the letters of the 2<sup>nd</sup> and 8<sup>th</sup> row. Ignore the empty cells.*

## WORD SEARCH

Find all 34 names of countries in the grid of letters. Each word reads in a straight line in any direction, horizontally, vertically, or diagonally. The central 50 letters in the grid have been removed, but they are randomized below the grid.

S	E	T	A	R	I	M	E	B	A	R	A	D	E	T	I	N	U	D	S	
D	O	M	I	N	I	C	A	N	T	R	E	B	I	L	S	A	N	E	D	
F	A	V	E	N	T	U	K	L	O	B	I	A	P	A	Y	A	N	S	N	
N	I	A	R	H	A	B	A	C	I	M	T	H	I	N	L	E	L	G	A	
A	N	T	O	R	O	P	C	D	O	N	I	L	E	I	G	O	P	A	L	
→	L	E	S	O	T										V	I	U	Z	R	
	E	M	Y	E	K										T	V	I	A	E	
	U	R	I	G	O										I	B	Y	A	Z	
→	Z	A	A	M	A										U	W	A	I	T	
	E	R	A	B	E										O	N	I	A	I	
	N	A	J	G	R	N	I	S	B	L	A	P	T	R	R	U	Q	S	N	W
	E	T	R	E	E	C	A	P	R	I	A	E	H	A	L	M	R	D	E	S
	V	O	Z	S	K	O	O	T	X	A	A	N	L	I	Q	T	I	A	M	E
	T	A	C	A	M	E	R	O	O	N	L	I	D	F	Y	A	R	I	S	O
	V	M	I	O	D	G	R	C	I	L	B	U	P	E	R	H	C	E	Z	C

- ARMENIA
- AZERBAIJAN
- BAHRAIN
- CAMEROON
- CZECH
- REPUBLIC
- DOMINICA
- HAITI
- HONDURAS
- INDIA
- ISRAEL
- JAPAN
- KENYA
- KUWAIT
- LATVIA
- LAOS
- LESOTHO
- LIBYA
- MACEDONIA
- MONTENEGRO
- MOROCCO
- NEPAL
- PANAMA
- PHILIPPINES
- POLAND
- QATAR
- SENEGAL
- SLOVAKIA
- SOMALIA
- SWITZERLAND
- THAILAND
- TURKEY
- UNITED ARAB
- EMIRATES
- VENEZUELA
- ZAMBIA

12 points

Missing letters:

U L R I C H T H O M A S  
 P A L M E R Z O L T A N  
 K O H I D E A K I B R A M  
 N I K O L A P A L J A N A

*Answer key: Enter all the **missing** letters of the 1<sup>st</sup> and 4<sup>th</sup> row.*