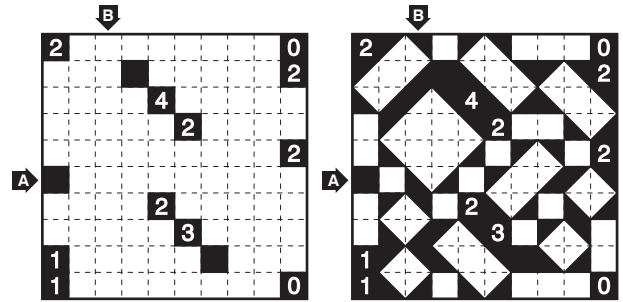
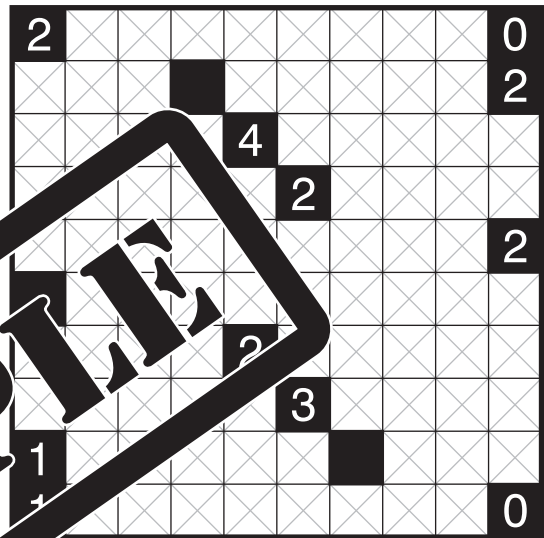
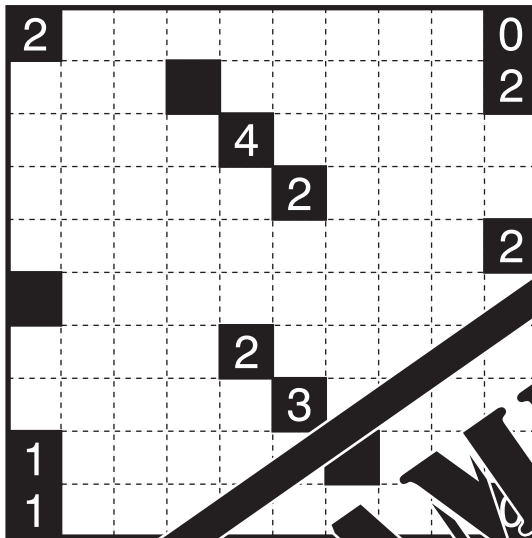


Shakashaka

Rule: Place one of the four isosceles right triangles (▲, ▴, ▾ or ▽) in some white cells. Every contiguous white region must be a rectangle (including a square). Numbers indicate how many triangles are adjacent to the cell by sides.



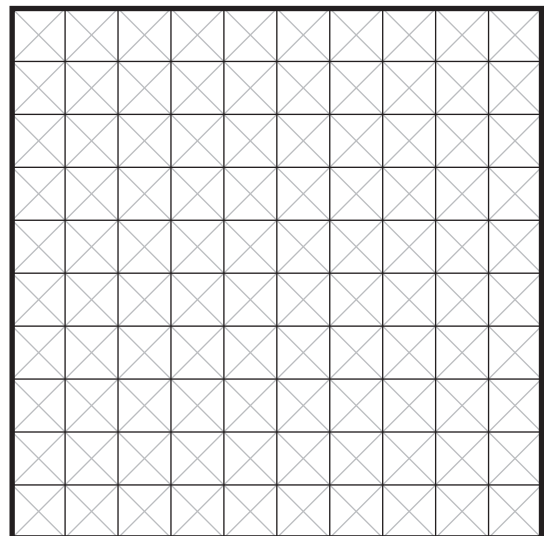
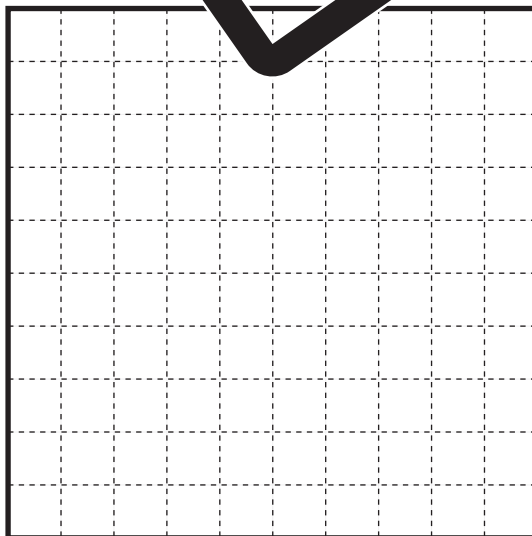
Answer Key: Enter the amount of **black triangles** you placed in the marked rows and/or columns.
For the example, the answer is "6, 8".



SAMPLE

A		B

A		B



A		B

A		B