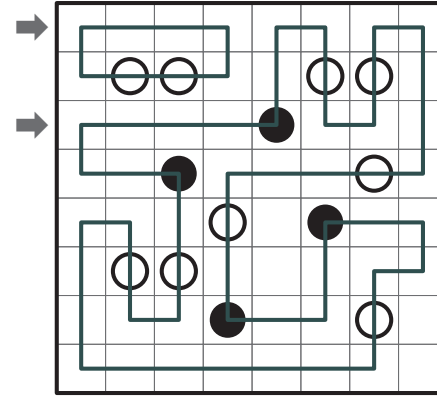


↓

1	5	1	3	4	2
→ 2	3	2	1	5	4
3	1	4	2	3	5
	2	5	4	1	3
2	4	3	5	2	1
	2		3	3	

A			9	3	
3	B			C	D
					4
		2	6		3
		4			E
		6	8		
			3	F	2
2	4				5



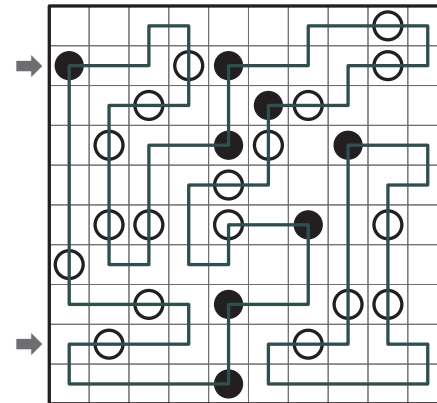
14 bulbs

☹	1			☹	☹		☹
		☹			☹		
							☹
	0	☹			☹	1	
☹		☹			1		
					☹		
☹	☹				☹		
☹		1	☹				☹

3 1 4 1 ↓

3	1	3	7	2	4	6	5	
→ 3	5	6	1	4	7	2	3	
3	3	4	5	1	6	7	2	
4	4	1	3	6	2	5	7	
	7	5	2	3	1	4	6	4
	2	7	6	5	3	1	4	4
	6	2	4	7	5	3	1	4
		3				3		

A	6		8					B	
		3							
			9		2		8		
			9		5				
			3		2			2	
C		2	2		D		3	2	2
	6			8		E			
					2	2		7	
						F	9		
		5					G		
2			12					H	



14 bulbs

								☹	
☹			☹	2	☹	☹			
2	☹			☹					
☹									
3	☹	☹					☹		
☹							2	☹	2
									☹
			☹					0	☹
			☹	3	☹	1	☹		
			☹						

11 mines

2		1	
2			
1	2		
2		2	
4	2	1	1

3			3
	3		3
	3	3	
	3		3
3		3	
	3	3	3
3	3		3
3	3		3

3	8	3	7	6	4	5	6
8	4	6	1	7	5	9	2
2	9	9	6	1	6	3	4
4	5	1	7	6	8	2	8
6	2	5	5	4	4	9	6
3	4	6	8	5	2	6	7
7	9	8	4	2	6	1	7
6	7	4	9	9	1	8	5

L	L	L	L	L	L	L
L	M	M	M	M	L	I
L	M	L	L	M	L	I
L	M	M	L	M	L	I
L	M	L	L	M	L	I
L	M	M	L	L	L	I
M	M	L	L	I	I	I

39 mines

2		1		1			
1	1	1	2		2		1
1	2				4		1
1	4						2
	5				4	2	
4	4					2	
4	7		5		4	2	
5							
5	6	5	5		4		
					2		1

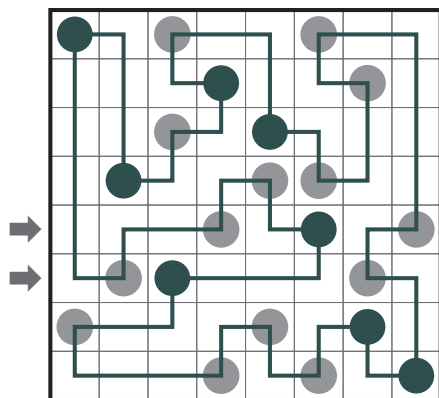
			3				
3				3	3		
3		3					
			3				3
		3	3				
3				3	3		
3	3	3					3
	3	3					
			3				3

1	9	6	5	3	7	6	8
9	7	2	4	9	8	6	1
4	6	4	3	1	9	8	4
7	5	9	1	4	1	2	7
8	2	6	7	5	1	3	6
5	8	1	1	6	3	9	2
3	3	4	6	8	4	5	2
3	1	8	9	1	2	4	5

L	L	L	L	L	L	L	L	L
L	M	L	M	M	I	L	I	L
L	M	L	M	M	I	L	I	L
L	M	L	L	M	I	L	I	L
L	M	M	M	M	I	L	I	L
L	M	I	I	I	I	I	I	I
M	M	M	M	M	I	M	I	M
M	I	M	I	M	M	M	M	I
M	I	I	I	I	I	I	I	I



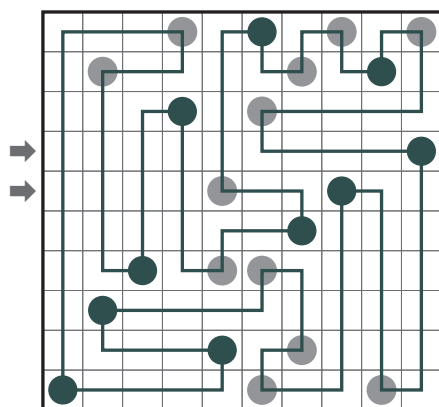
	AD	↓	CD		AC
C	-	C	D	B	A
D	D	B	C	A	-
A	A	-	B	D	C
→	C	D	A	-	B
A	B	B	A	-	C
					D



→	4	6	2	5	1	3
→	1	3	5	2	4	6
	3	5	1	4	6	2
	6	2	4	1	3	5
	5	1	3	6	2	4
	2	4	6	3	5	1

	↓	↓	↘	↘	↓
↘	1	1	2	1	2
↘	2	2	2	2	4
↘	4	4	0	2	3
↗	3	2	2	1	3
↗	1	2	2	4	2
	↑	↑	↗	↑	↑

	BD	BE	↓	BC	BC
C	B	A	-	D	-
D	D	C	E	A	-
→	A	E	-	-	B
B	-	D	B	E	C
D	C	-	A	B	E
B	-	B	D	C	A
	E	-	C	-	D
					B



→	6	3	8	7	4	2
→	1	4	7	9	6	5
	5	9	2	1	8	3
	9	8	6	4	2	7
	4	1	3	8	5	6
	2	7	5	3	9	1
	8	2	1	5	3	9
	3	5	9	6	7	4
	7	6	4	2	1	8

	↓	↓	↓	↓	↓
→	2	3	2	2	2
↘	2	1	1	1	1
↗	2	1	2	2	1
→	2	4	1	1	3
↘	2	1	3	3	2
↗	1	2	2	2	1
	↗	↗	↖	↖	↖

