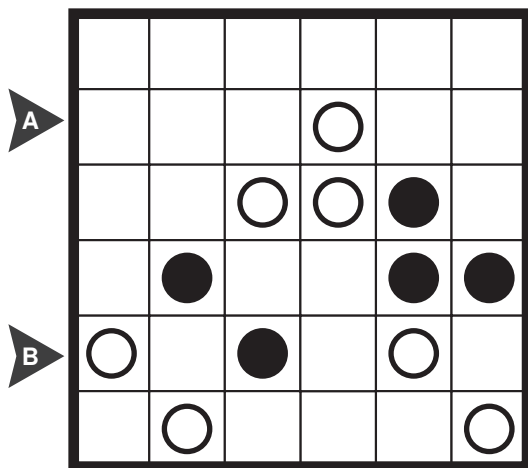


Rule
 Place a black or white circle in each empty cell so that all circles of same color are connected to each other, vertically or horizontally. Additionally, no 2X2 group of cells can contain circles of a single color.

Answer Key format: For each marked row, enter the number of black circles, including the given ones.

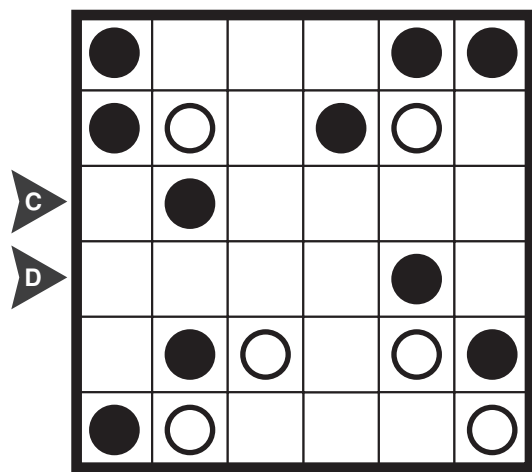


1

Introduction
2 points

2

Introduction
2 points



Rule
Place a black or white circle in each empty cell so that all circles of same color are connected to each other, vertically or horizontally. Additionally, no 2X2 group of cells can contain circles of a single color.

Answer Key format: For each marked row, enter the number of black circles, including the given ones.

		○	○		○	○		○	
E	○			○			○		
	○						○		○
F	○		○		○	○			
				○					
	○	○		○			○		○
	○				○	○			
G	○			○		○			
	○	○					○		

3

Intermediate
5 points

4
Intermediate
6 points

			●						
H			●		○		○		
			●			○			●
I			●		●		○		○
		●		●		○			
				●	○				
	○				○		○		
J		○		○			○		○
	○					○			
							○		

Rule
Place a black or white circle in each empty cell so that all circles of same color are connected to each other, vertically or horizontally. Additionally, no 2X2 group of cells can contain circles of a single color.

Answer Key format: For each marked row, enter the number of black circles, including the given ones.

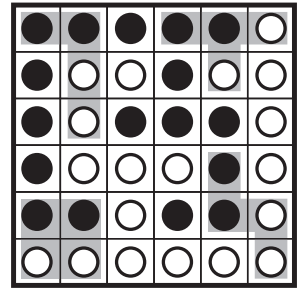
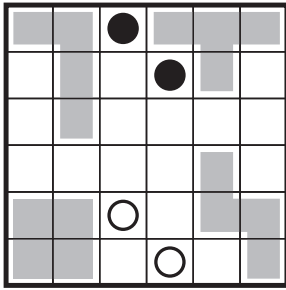
		●						●		
K	●	○	○			○		○	○	●
		●			○	○	●		○	
			●			●				
	●	●	○				●			
		○				○	●	○		
L					○			●		
	●		○	●	○				●	
	○	●	○		●			○	○	●
M		○							●	

5
Challenging
7 points

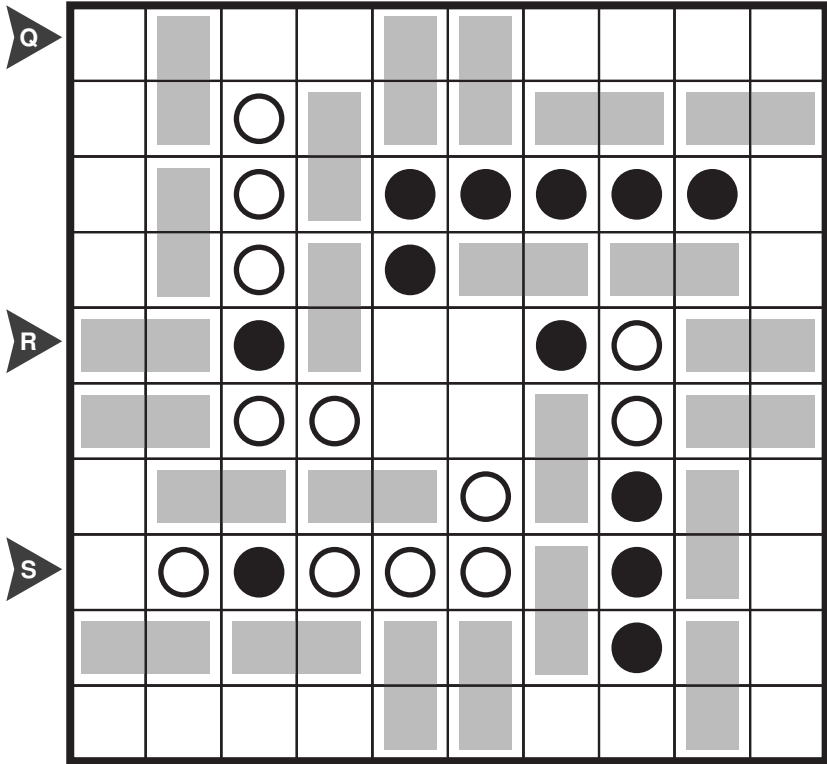
6
Challenging
9 points

N			●	○	●	○	○	●		
		○	○					○	○	
		○			○	○			○	
	●		○			○		●		
O		○		●			○		●	
	●				○	○			●	
P		○	●					●	○	
			●	○	●	●	○	●		

Solved
Example for
Exploratory
puzzles



Answer Key format: For each marked row, enter the number of black circles, including the given ones.

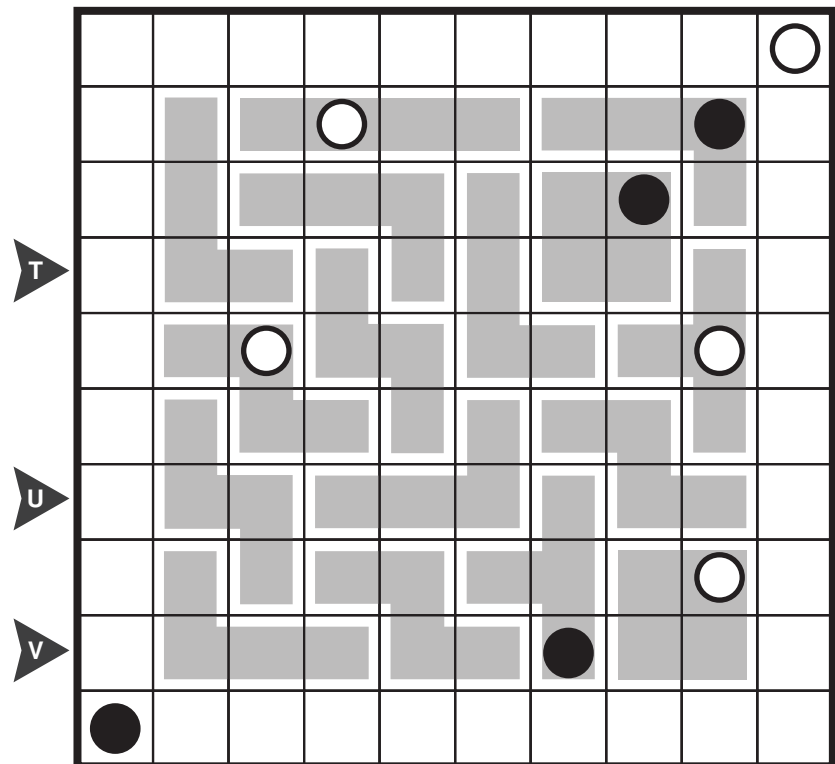


7

Exploratory
10 points

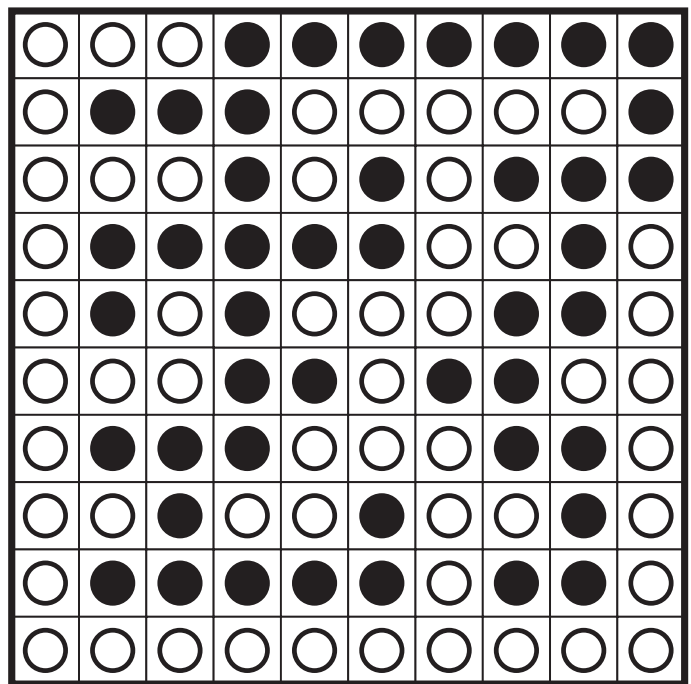
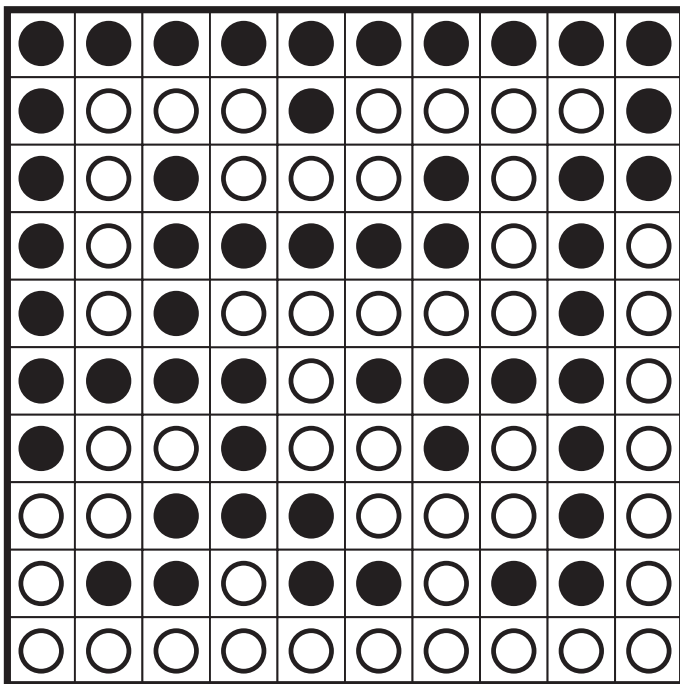
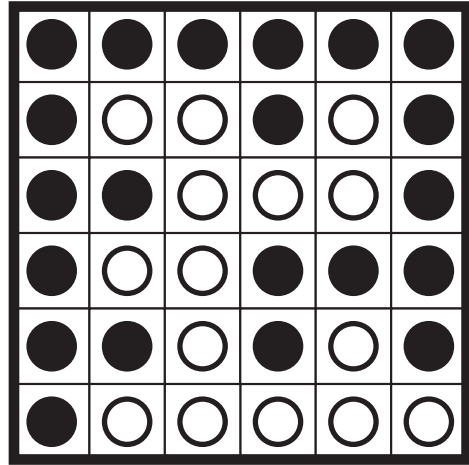
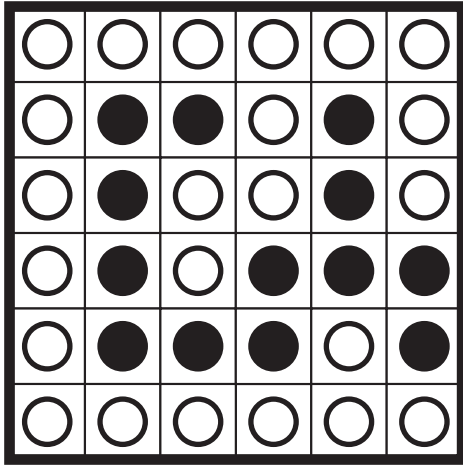
8

Exploratory
9 points



Rule
 Place a black or white circle in each empty cell so that all circles of same color are connected to each other, vertically or horizontally. Additionally, no 2X2 group of cells can contain circles of a single color.

Answer Key format: For each marked row, enter the number of black circles, including the given ones.



Rule
 Place a black or white circle in each empty cell so that all circles of same color are connected to each other, vertically or horizontally. Additionally, no 2X2 group of cells can contain circles of a single color.

Answer Key format: For each marked row, enter the number of black circles, including the given ones.

