

LMI Beginners' Puzzle Contest

8th to 13th May 2014

Quick Summary

- There will be 2 rounds, each round consisting of 8 puzzles of one type.
- Time bonus (2 points per minute saved) will be awarded, if a round is completed before 40 minutes
- Category bonus will be awarded if both puzzles in a category solved within 40 minutes
- Puzzles submitted after 40 minutes will be worth half of its original points
- "Instant Grading" will be enabled, that means
 - Upon submitting a puzzle, you will immediately know if it is correct or not
 - Every wrong submission will be penalized by adding 1 minute to your submission time
- Details available at <http://logicmastersindia.com/forum/forums/thread-view.asp?pid=13241>

Points Table

Category	#	Minesweeper		Yin-Yang	
		Points	Category Bonus	Points	Category Bonus
Introductory	1	2	5	2	5
Introductory	2	3		2	
Intermediate	3	6	7	5	7
Intermediate	4	6		6	
Challenging	5	7	9	7	9
Challenging	6	8		9	
Exploratory	7	10	9	10	9
Exploratory	8	8		9	
		50	30	50	30

Note about Exploratory Puzzles

The rules will be slightly different from the base puzzles. We will provide a sample puzzle and its solution. Players need to deduce the rules from the solved example.

Submission page: <http://logicmastersindia.com/BeginnersPuzzle/201405/>

Forum Discussion: <http://logicmastersindia.com/forum/forums/thread-view.asp?pid=15173>

Minesweeper

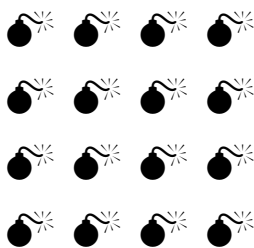
Rule

Place the given number of mines into the empty cells, so that each digit represents the number of mines in the 8 neighbouring cells.

Answer Key format: For each marked row, enter the number of mines.

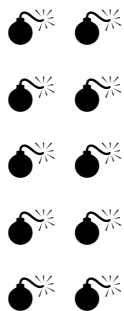
A			3		2
	4			4	
B			4		2
	1		4		
C		4		4	
	1		2		

16 mines



				3		2
		4			4	
			4			2
	1			4		
		4			4	
	1		2			

10 mines



		3	2		1	D
						E
	0				3	
	2				2	
	2		3	2		F

		3	2		1
	0				3
	2				2
	2		3	2	

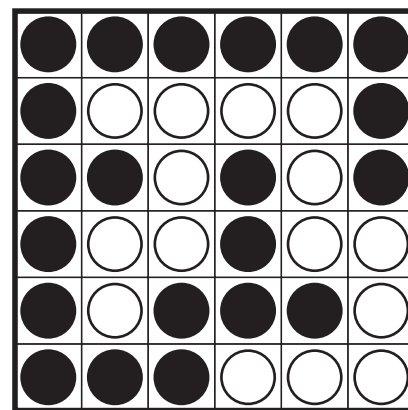
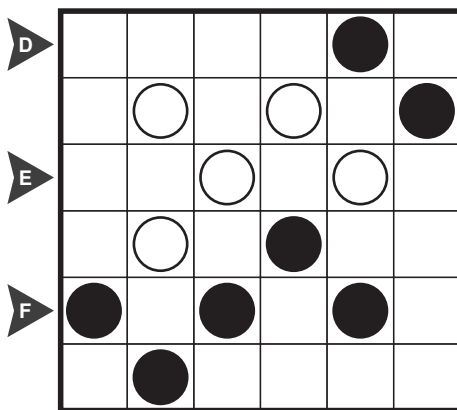
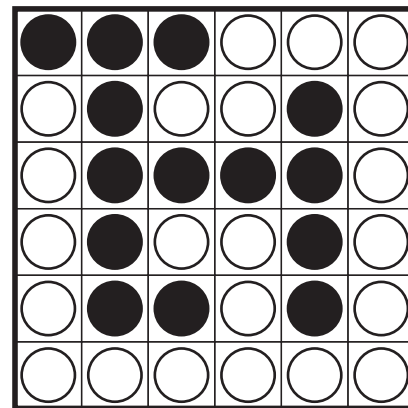
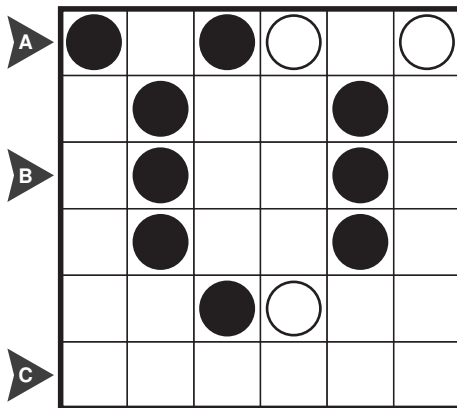
Answer key for the top grid is 412. Answer key for the bottom grid is 130

Yin-Yang

Rule

Place a black or white circle in each empty cell so that all circles of same color are connected to each other, vertically or horizontally. Additionally, no 2X2 group of cells can contain circles of a single color.

Answer Key format: For each marked row, enter the number of black circles, including the given ones.



Answer key for the top grid is 340. Answer key for the bottom grid is 644

Recommended Links for more puzzles / solving guide

Minesweeper

1. Practice Puzzles (10 mines each in 6X6 grids, 20 mines each in 8X8 grids)
http://5mp.eu/fajlok/logikairejtveny/aknakereso.283.291_www.5mp.eu_.pdf
2. Steps to solve minesweeper in EverGreens 1
<http://logicmastersindia.com/t/?tid=77>

Yin-Yang

3. Practice Puzzles
http://5mp.eu/fajlok/logikairejtveny/jin_jang.235.242_www.5mp.eu_.pdf
4. The Logical World of Puzzles (Solving Guide)
<http://rohanrao.blogspot.in/2010/12/solving-black-and-white-edge-connection.html>
<http://rohanrao.blogspot.in/2011/02/solving-black-and-white-opposite-pairs.html>
5. Yin-Yang Variations Contest
<http://diogen.h1.ru/cgi-bin/contest/contest.pl?id=39>