

ALL ODD/EVEN

(47 POINTS)

Apply classic sudoku rules.
In every 3x3-block the
grey cells contain either all
odd or all even digits.



↓

	6		7		2		1	
7		2				5		6
				4				
4		5				6		7
				7				
3								9
			8		3			
8								2



SCATTERED

(51 POINTS)

Place the digits from 1 to
9 in every row, column,
boldly outlined irregular
area and the grey cells.



	6		7		2		1	
7		2				5		6
				4				
4		5				6		7
				7				
3								9
			8		3			
8								2

ARROW

(48 POINTS)

Apply classic sudoku rules.
The digits in the point of an arrow are the sum of the other digits in the same arrow.



↓

						3	→	
								5
	9		5				←	
	1			9				
				2				
				8				1
					3			9
	8							



SUM 100

(70 POINTS)

Apply classic sudoku rules.
In each row, the sum of number combinations in the grey cells is exactly 100.



						3		
								5
	9		5					
	1			9				
				2				
				8				1
					3			9
	8							

ASCENDING

(60 POINTS)

Apply classic sudoku rules.
On every bold grey line
the digits are ascending
from one end to the other
end.

↓

→

				7			

ASCENDING

NONCONSECUTIVE

(80 POINTS)

Apply classic sudoku rules.
On every bold grey line
the digits are ascending
from one end to the other
end. Horizontal or vertical
neighbouring cells cannot
contain consecutive digits.

↓

→

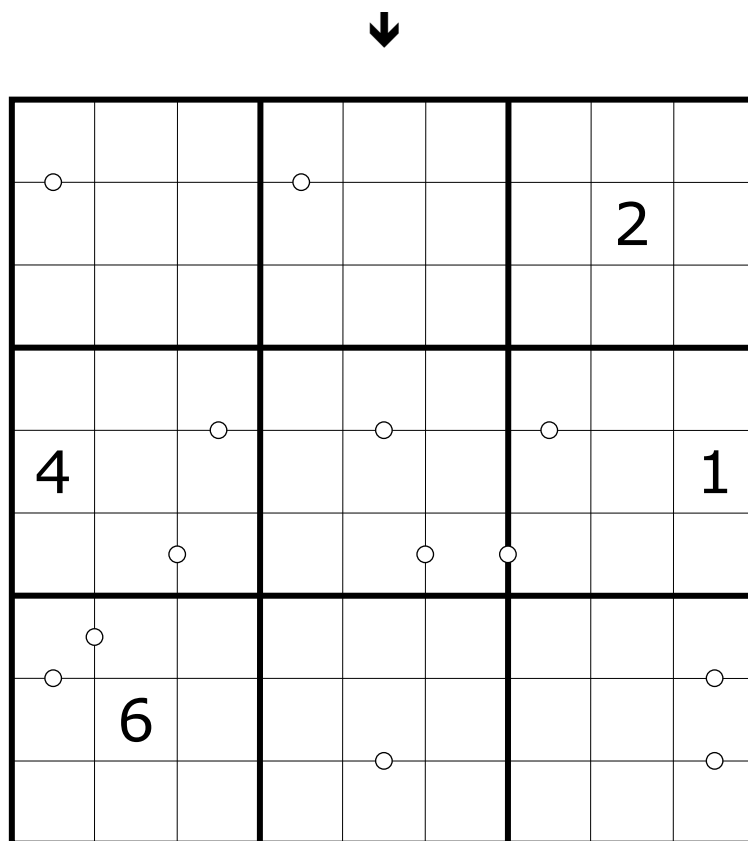
				7			

CONSECUTIVE

(90 POINTS)

Apply classic sudoku rules. →

In all cases where two neighbouring cells contain consecutive digits, a circle is placed between those cells.

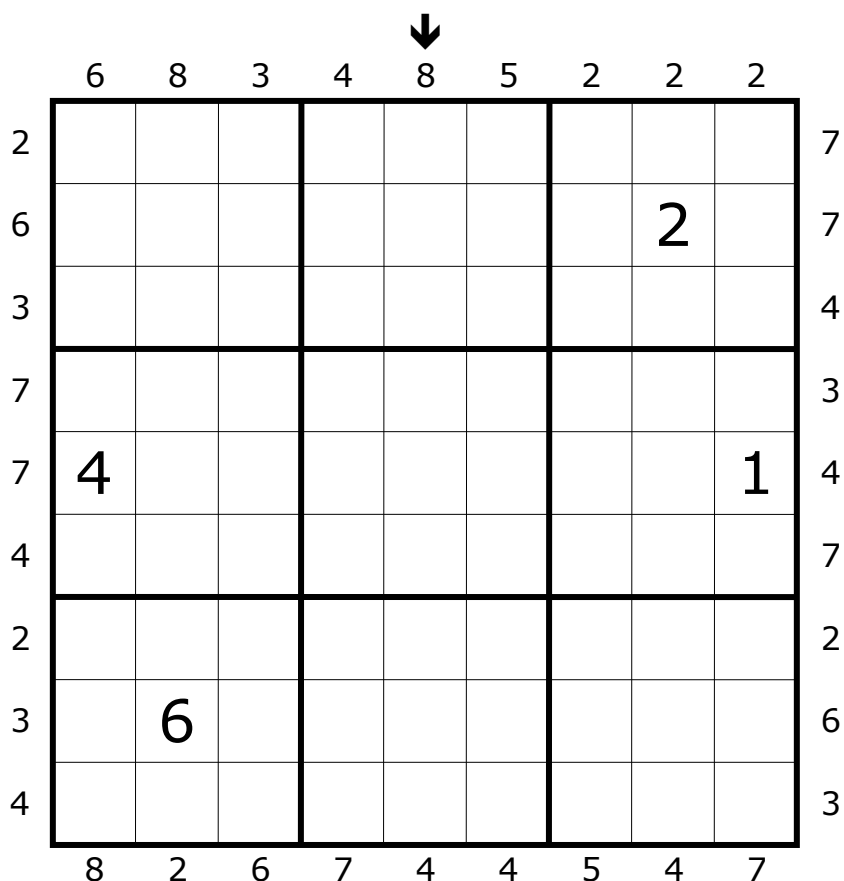


MAXIMIN

(82 POINTS)

Apply classic sudoku rules. →

Digits outside the grid are the difference between the highest and the lowest digit in the first three cells.



EQUAL

(130 POINTS)

Apply classic sudoku rules.
 In all dotted areas the
 sum of the odd digits
 equals the sum of the
 even digit(s). Digits do not
 repeat in a dotted area.



↓

	2						3
8							
					5		
				8			
		6					
		7					
							6
1						5	



LOW

(41 POINTS)

Apply classic sudoku rules.
 In every 3x3-block the
 lowest digits have to be
 written in the grey cells.



	2						3
8							
					5		
					8		
			6				
		7					
							6
1						5	

POSITION
(63 POINTS)

Apply classic sudoku rules.
Digits outside the grid are
the position of the highest
digit in the first three
cells.

↓

	3	2	2	1	1	3	2	1	3	
1			2	8						2
2				2	1					3
1									7	1
3								4	9	1
2		4						5		1
→ 3	1	7								2
2	3									3
1					3	8				2
2						2	3			1
	2	1	3	1	3	2	3	3	2	



RENBAN
(120 POINTS)

Apply classic sudoku rules. →
Digits in grey areas form
Renban groups. They hold
consecutive digits, in any
order.

		2	8					
			2	1				
								7
							4	9
	4						5	
1	7							
3								
				3	8			
					2	3		