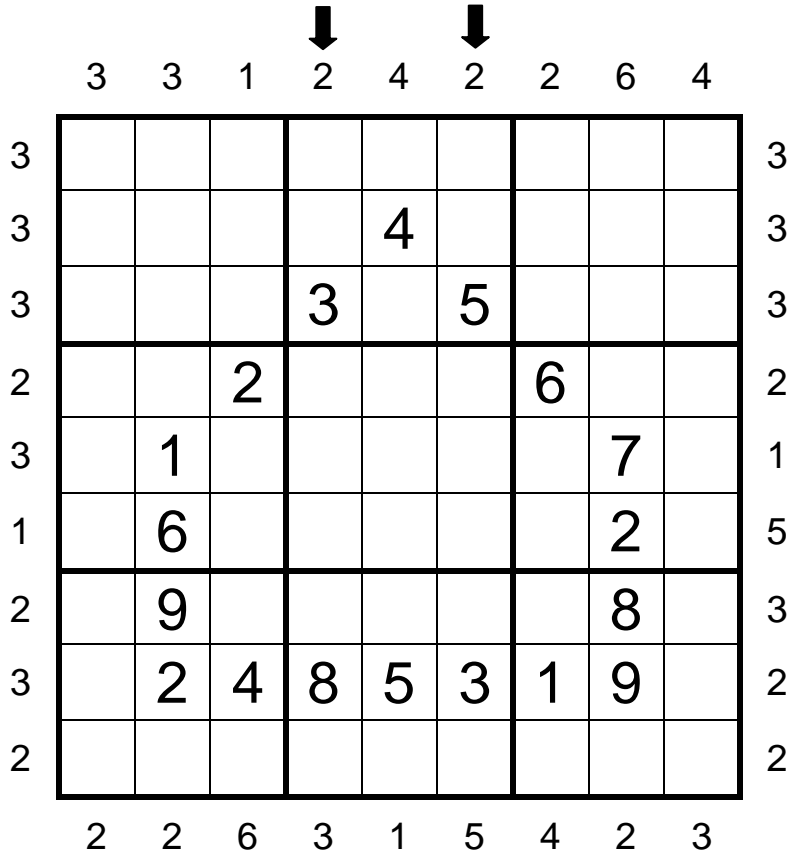


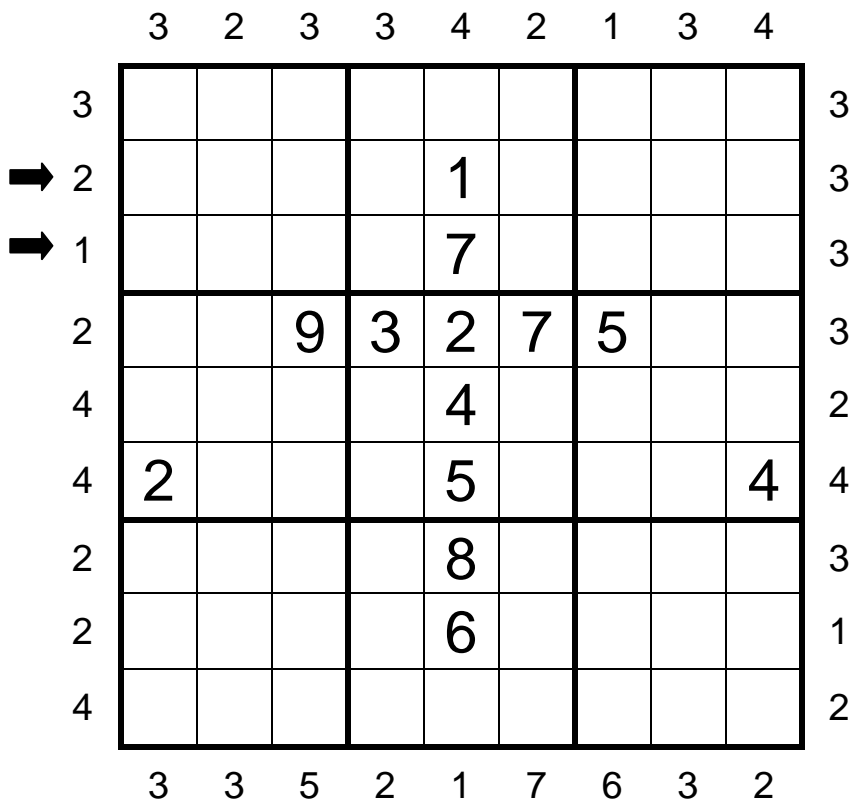
## CLASSIC (CITY HALL) 8pts

The digits outside the grid indicate the number of skyscrapers seen from the corresponding direction.



## CLASSIC (CHURCH) 6pts

The digits outside the grid indicate the number of skyscrapers seen from the corresponding direction.



## JIGSAW (BRIDGE) 12 pts

Place numbers in the grid such that each row, column and outlined region contain the numbers 1 to 9. The digits outside the grid indicate the number of skyscrapers seen from the corresponding direction.

↓

	3	1	2	2	5	3	4	3	2	
2										4
5			6		4		3			1
3										3
2		4							2	3
3			7						1	2
1										5
3	5								7	2
3				3		4				3
4					5					3
	2	3	2	2	3	4	1	3	4	

→

## FALSE CLUE (AIRPORT) 10 pts

The digits outside the grid indicate the number of skyscrapers seen from the corresponding direction, but all given numbers are wrong. The correct number is either 1 higher or 1 lower.

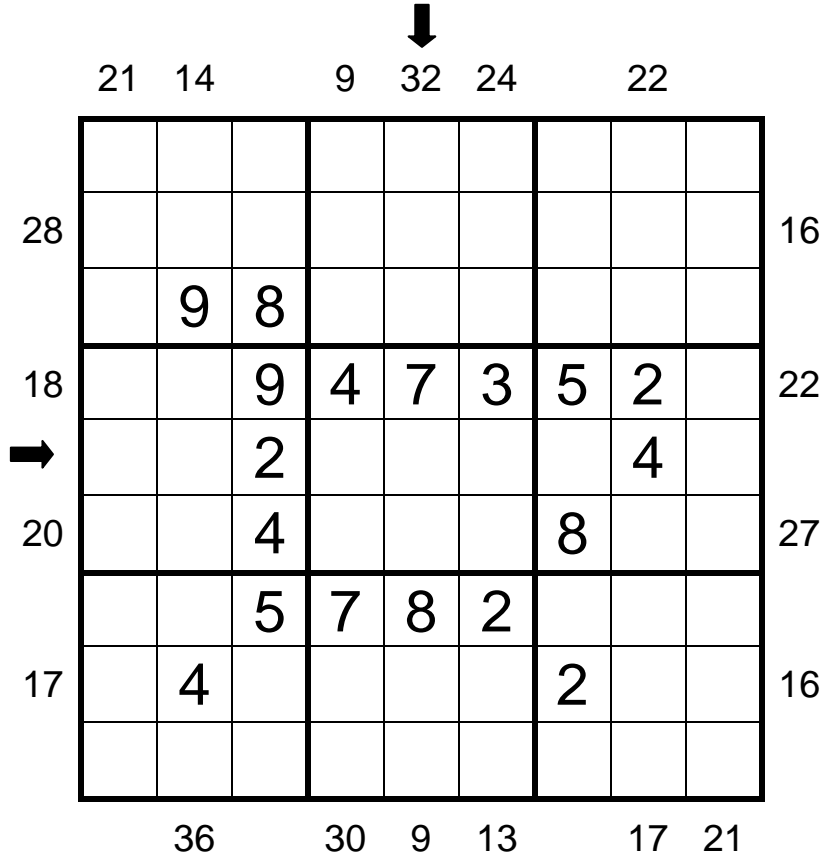
↓

	5	4	0	2	2	3	2	2	4	
2										5
4				2						5
7					5					4
4		4			8					2
3		9	2	4	1	3	6	7		3
1		1			2					4
2					6					4
2				5						2
2										3
	3	3	6	4	1	5	2	2	3	

→

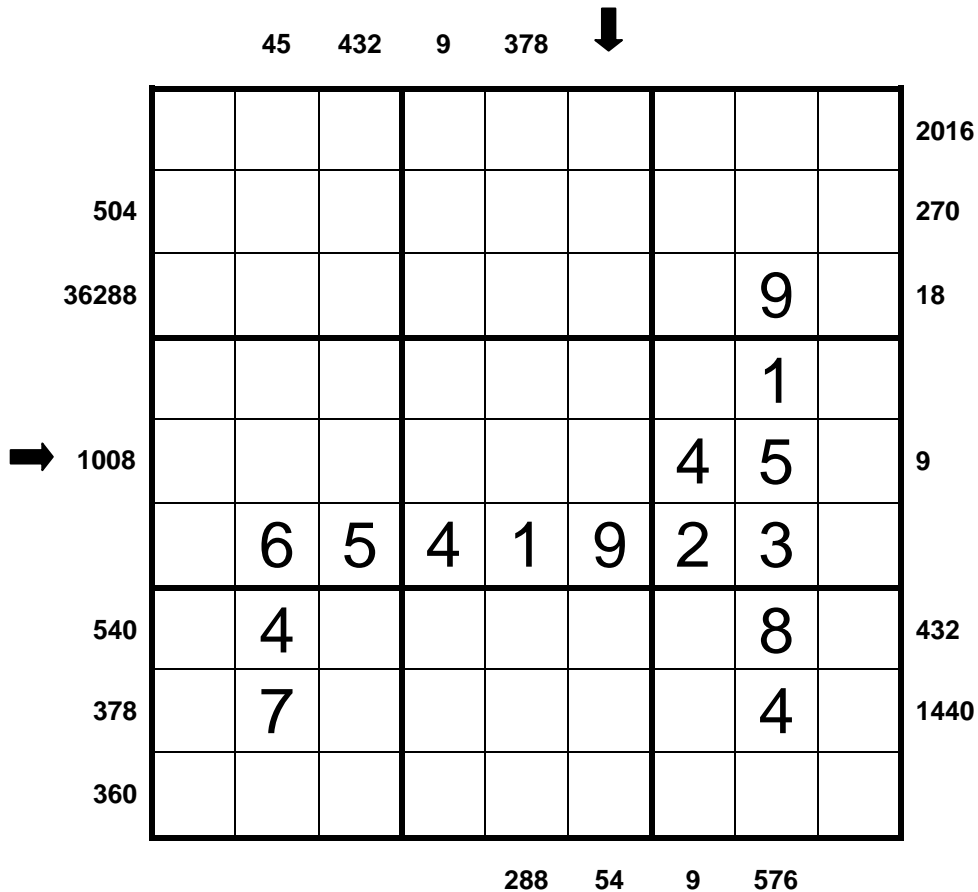
## SUM (SHOPPING CENTRE) 7 pts

The digits outside the grid indicate the sum of the skyscrapers seen from the corresponding direction.



## PRODUCT (HOSPITAL) 7 pts

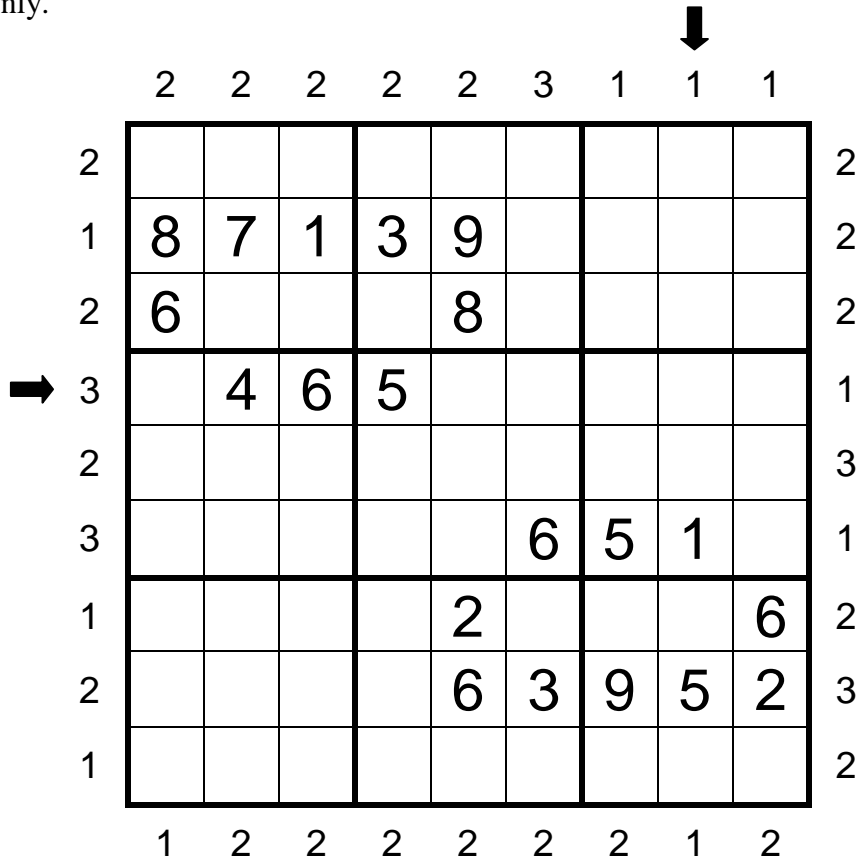
The digits outside the grid indicate the product of the skyscrapers seen from the corresponding direction.





## FIRST 3 (THEATRE) 9 pts

The digits outside the grid indicate the number of skyscrapers seen from the corresponding direction in the first 3 cells only.



## TOTAL (MUSEUM) 6 pts

The digits in shaded cells indicate the number of skyscrapers seen in all the 4 possible directions. All such cells are shaded.

